

# **Simulations of Harvest and Recovery for the Bathurst Caribou Herd, with Annual Variation (DRAFT Report March 12, 2010)**

**John Boulanger, Integrated Ecological Research, 924 Innes, Nelson, BC V1L 5T2**

## **Plain Language Summary (J. Adamczewski, GNWT ENR)**

In workshops and reports on the decline of the Bathurst caribou herd in late 2009 and early 2010, ENR used population projections from the Bathurst Caribou Calculator, a spreadsheet model first constructed for the Porcupine caribou herd, to look ahead and assess likely trend for the Bathurst herd under various sets of conditions. In particular, the modeling allowed us to consider how various levels of hunter harvest would likely affect the herd. This model is “deterministic”, which means that it projects the herd’s population trend as a single “determined” line with a single population estimate at any point.

In the real world, weather, calf survival, and other variables change from year to year, and there is uncertainty. ENR asked modeler/statistician John Boulanger to look at the Bathurst herd’s possible futures using a “stochastic” model. Instead of a single projection for the Bathurst herd, the model is run hundreds of times for each set of conditions, with each model run having a different set of calf survival, cow survival and other numbers changing from year to year. “Stochastic” means essentially that year to year variation is allowed for, and the outcome is a range of possibilities. For any set of conditions, the outcome is a projected population size, but there are in effect many lines and possible herd sizes over time. These can then be grouped and the percentage of lines in each category can be added up. In this case the categories were:

- (1) rapid decline (herd less than 16,000, half the 2009 estimate of 32,000)
- (2) medium decline (herd between 16,000 and 23,000)
- (3) slow decline (herd between 23,000 and 32,000)
- (4) slow increase (herd 32,000-44,000), and
- (5) medium increase (herd over 44,000).

For each set of conditions, one or two of these categories were the most likely outcomes, with fewer outcomes in the other categories. These can then be interpreted as the probability of the herd following each of these trends.

The work is summarized in the report from John Boulanger that follows. This introductory section provides a plain-language summary to illustrate some of the outcomes. Most of this work was carried out in February and March 2010 and is on-going. ENR has provided this draft report to the Wek’eezhii Renewable Resources Board (WRRB) as it might assist the board in considering a possible Total Allowable Harvest for the Bathurst herd. As described by John Boulanger in his more detailed report, these analyses could also be used to help define a technically sound monitoring approach and to contribute to an adaptive management program.

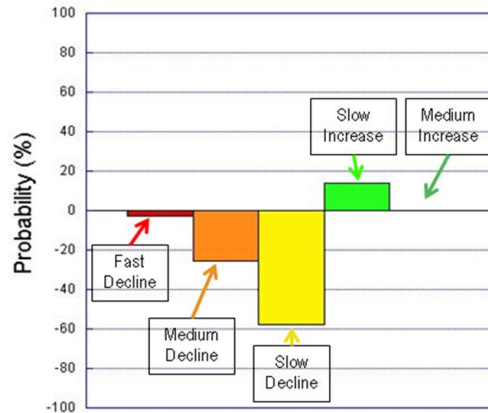


Figure 1. An example of the modeling output from the stochastic modeling. The size of the bar shows the likelihood of that outcome. Bars for decline are below 0, and bars for increase are above 0. In this case the most likely outcome is a slow decline.

The Ordinary Least Squares (OLS) as described by Boulanger and Gunn (2007) and Boulanger et al. (2010), forms the basis for the harvest stochastic simulation model. The outputs from the stochastic modeling are shown as probabilities of each of the 5 outcomes listed above (Fig. 1). Probabilities of decline are shown as going below the line, and probabilities of increase are shown above the line. In the example shown, the most likely outcome is a slow decline, with lower probabilities of faster decline and slow increase. A stable herd would have equal probabilities of slow decline (yellow) and slow increase (light green). Natural survival rates are assumed to be 88%, and all projections are for 6 years.

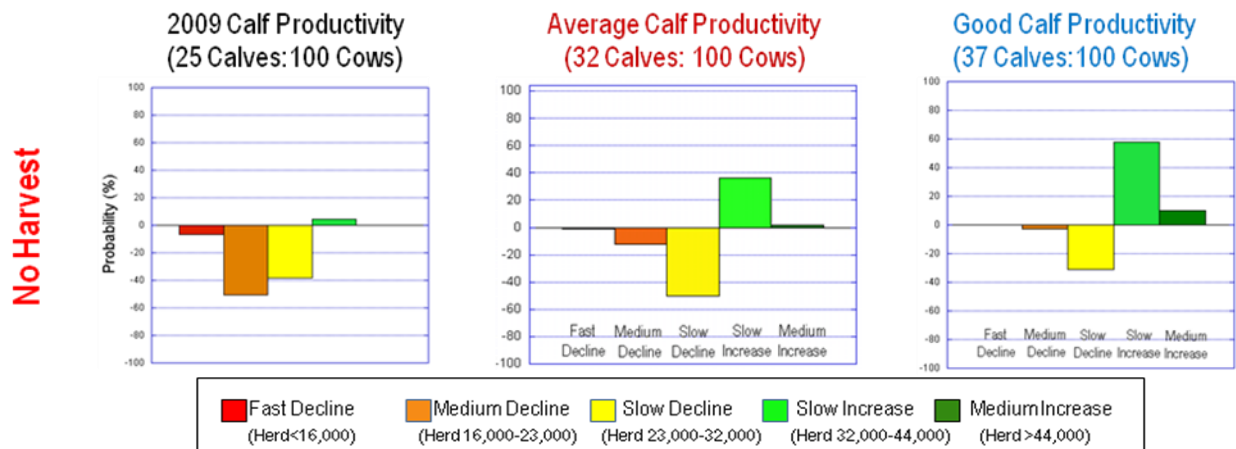


Figure 2. Likely 6-year population trend for the Bathurst herd with no harvest and calf productivity varying from 2009 levels (left) to average levels for the herd 1986-2009 (middle), and calf productivity for this herd before 1995 (right).

In Fig. 2, likely population trend for the Bathurst herd is shown assuming no harvest, and with the calf productivity the herd had in 2009. Calf productivity is shown as estimated spring calf:cow ratio. Note that the spring calf:cow ratios as recorded in the field showed higher values in 2008 and 2009, but these were falsely high due to high cow mortality

The figure consists of three bar charts, each representing a different herd size and productivity level. The y-axis for all charts is 'Probability (%)' ranging from -100 to 100. The x-axis categories are: Fast Decline, Medium Decline, Slow Decline, Slow Increase, and Medium Increase.

- 2009 Calf Productivity (25 Calves:100 Cows):** This chart shows a high probability of a 'Fast Decline' (red bar, approximately -80%) and a 'Medium Decline' (orange bar, approximately -10%).
- Average Calf Productivity (32 Calves: 100 Cows):** This chart shows a high probability of a 'Fast Decline' (red bar, approximately -80%) and a 'Medium Decline' (orange bar, approximately -10%).
- Good Calf Productivity (37 Calves:100 Cows):** This chart shows a high probability of a 'Fast Decline' (red bar, approximately -80%) and a 'Medium Decline' (orange bar, approximately -10%).

Legend:

- Fast Decline (Herd < 16,000)
- Medium Decline (Herd 16,000-23,000)
- Slow Decline (Herd 23,000-32,000)
- Slow Increase (Herd 32,000-44,000)
- Medium Increase (Herd > 44,000)

In Fig. 3 are likely outcomes for the same three levels of calf productivity and a harvest of 3000 cows and 2000 bulls. This is a conservative estimate of the likely Bathurst harvest in 2008-2009. With this harvest, the herd can only decline quickly, regardless of calf productivity. There is no level of calf production and survival that can compensate for these adult mortality rates, and in particular the high cow mortality. Similar results were obtained for harvest of 6000 (4000 cows) and 7000 (5000 cows). At this scale of harvest, the risk of rapid decline is very high.

3

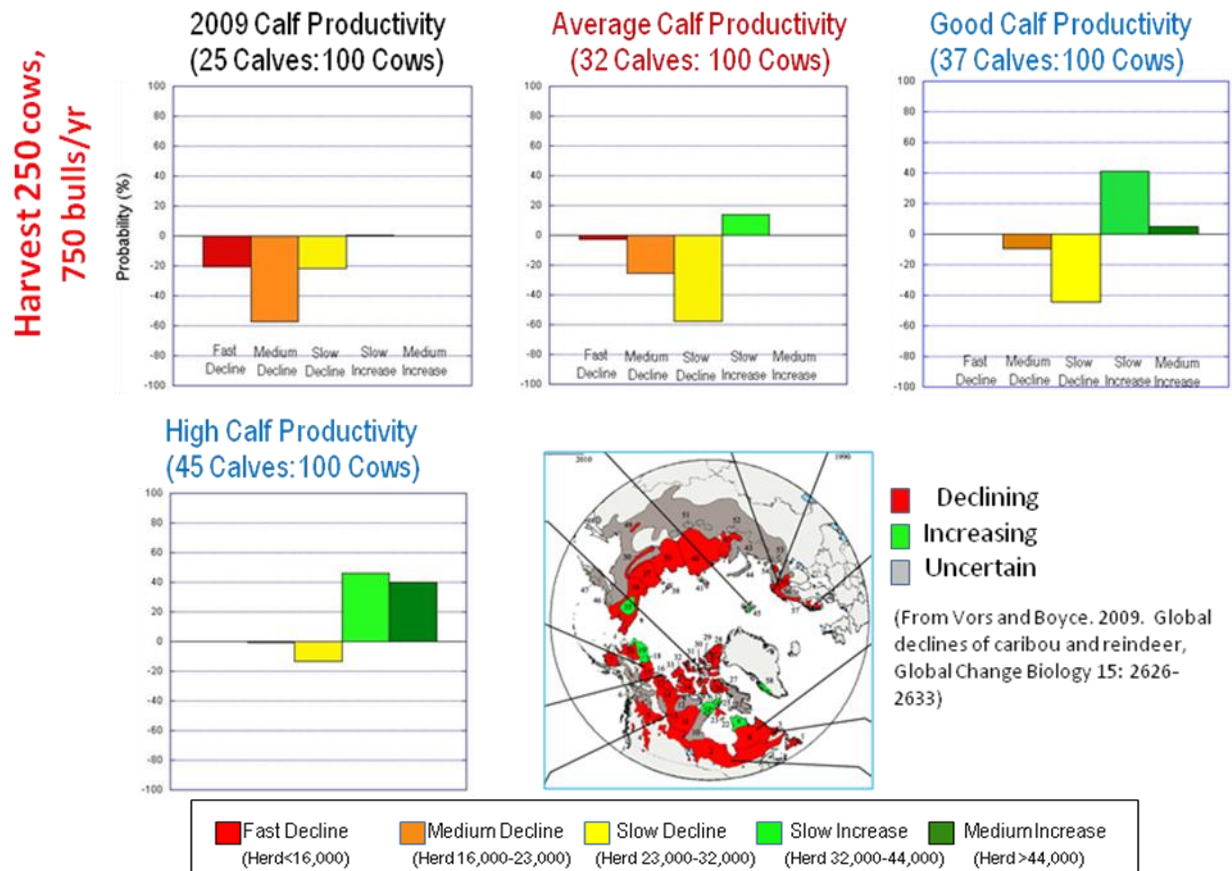


Figure 4. Likely 6-year population trend for the Bathurst herd with harvest of 1000 caribou/year (250 cows and 750 bulls), and calf productivity varying from 2009 levels (top left) to average levels for the herd 1986-2009 (top middle), and calf productivity for this herd before 1995 (top right). On the bottom left is the likely outcome with high calf productivity; these numbers were borrowed from the Western Arctic Herd in Alaska when it was increasing. The bottom right figure shows population trend of global caribou and reindeer in 2009, from Vors and Boyce (2009).

Two further harvest levels were considered: a harvest of 500 caribou (400 bulls, 100 cows) and harvest of 200 bulls (0 cows). These results are shown in Fig. 5. At 2009 calf productivity, both these harvest levels would increase the likelihood of decline, but the decline would likely be relatively slow compared to the decline between 2006 and 2009. If calf productivity improves, the herd could be stable or might begin to increase slowly at these lower harvest levels.

Overall, these results point to a number of clear trends:

1. To recover, the Bathurst herd needs both higher adult survival, particularly in cows, and increased calf productivity.
2. If 2009 calf productivity continues, the most likely trend with no harvest is a slow or medium decline. From a caribou conservation perspective, the herd's chances of recovery are highest if there is no further harvest in the next few years.
3. At harvest levels of 3000-5000 cows and 2000 bulls/year, the herd cannot recover, regardless of calf productivity.

- At lower harvest levels, particularly if the harvest is mostly bulls and between 200 and 500 caribou in total, there is a risk of further decline, but the decline would likely be much slower than occurred between 2006 and 2009.
- A limited harvest could be considered for an interim period (e.g. until the next population survey in 2012), acknowledging that there is a risk to the herd of further decline. A more comprehensive co-management plan for the Bathurst herd could be developed during this period.
- We stress that an adaptive management approach is essential for recovery of the Bathurst herd. Monitoring of productivity indicators (calf-cow ratios) and firm estimates of harvest would help further determine the relative recovery of the herd and allow better assessment of the applicability of simulation model outcomes.

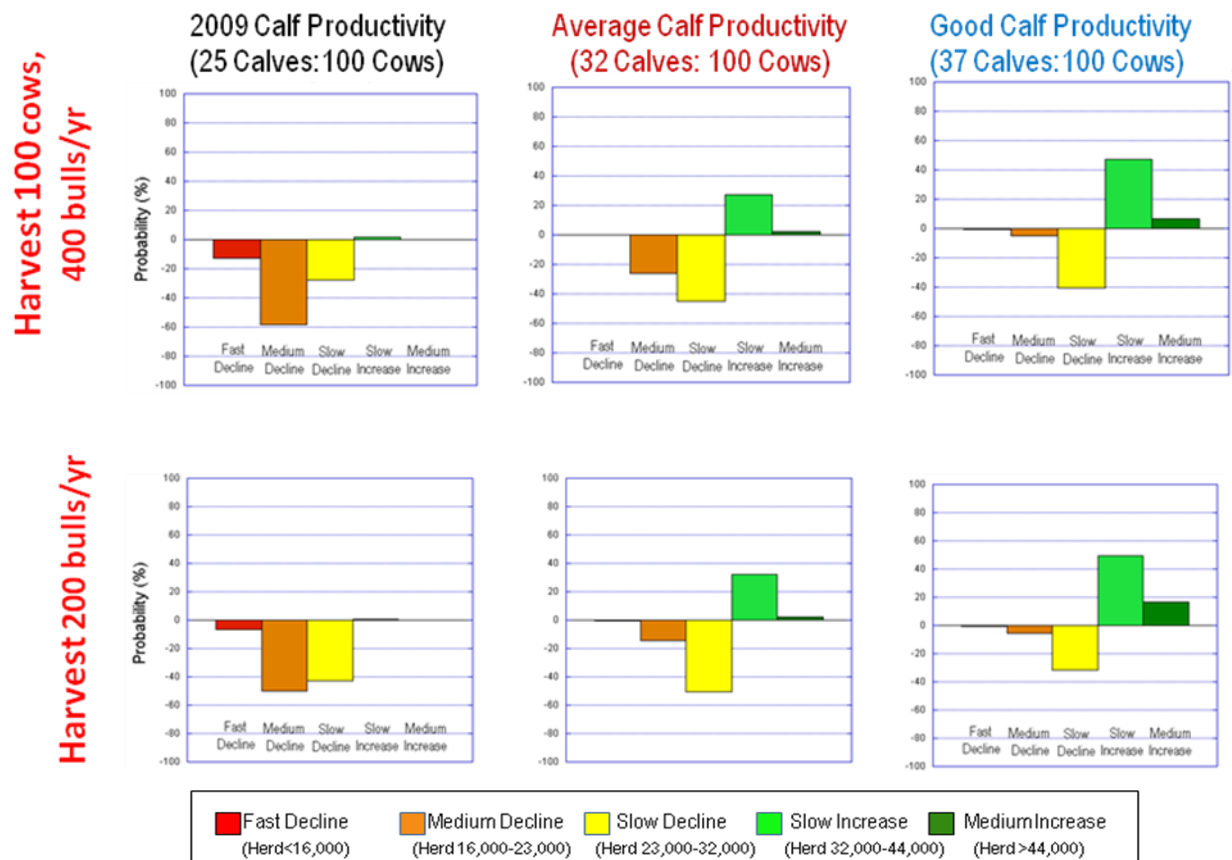


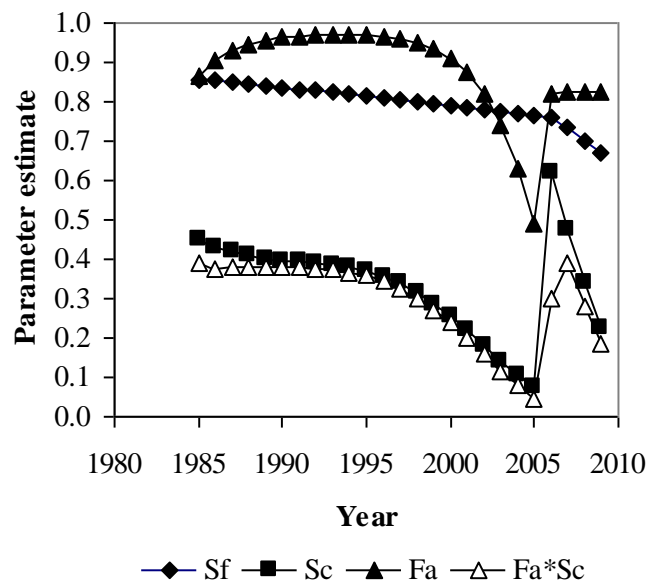
Figure 5. Likely 6-year population trend for the Bathurst herd with harvest of 100 cows and 400 bulls/year (top row), and a harvest of 200 bulls/year (bottom row).

# Simulations of Harvest and Recovery for the Bathurst Caribou Herd, with Annual Variation (Technical version; DRAFT Report March 12, 2010)

John Boulanger, Integrated Ecological Research, 924 Innes, Nelson, BC V1L 5T2

## 1. Introduction

In this report I explore scenarios for the recovery of the Bathurst herd under varying levels of harvest and management regimes. This work uses the stochastic population model as developed by Boulanger and Gunn (2007) and Boulanger et al. (2010) to simulate variation in demographic parameters in the Bathurst herd. There are many uncertainties that should be considered when forecasting recovery of the Bathurst herd. First, estimates from the deterministic OLS model of Boulanger et al. (2010) suggest that adult female survival and calf survival have varied greatly since 1985, and it is difficult to assess what future values of these parameters may be. This makes subsequent forecast of recovery difficult (Figure 6). Second, future trends in climate, harvest, and other covariates of demography are difficult to predict and therefore a wide range of potential scenarios for population trend are possible.



**Figure 6:** Trends in model-averaged estimates of parameter values from models in Table 1 for the Bathurst caribou herd (1985-2009) from Boulanger et al (2010). Productivity as estimated by fecundity times calf survival is given for reference. Adult female survival (Sf), Calf survival (Sc), Fecundity (Fa) and productivity (Fa\*Sc) are shown. Adult male survival ( $S_m$ ) was 0.64 and yearling survival ( $S_y$ ) was 0.86 for all years because temporal trends were not simulated in these parameters.

A stochastic model is basically a simulation model that is run hundreds of times with variation in demographic parameters simulated. The advantage of using a stochastic

approach is that the outcomes include a range of possible “futures” for the herd. In the natural world, calf survival, pregnancy rate, and other variables change from year to year. The outcomes of stochastic modeling identify the most likely trends under a particular set of conditions, but they also make clear that there is uncertainty around those likely trends.

The main objective of this exercise was to use the stochastic model as an aid in setting management targets (i.e. herd sizes), and objectives while appropriately considering the uncertainty caused by natural variation in population parameters. Given uncertainty in Bathurst demography, any management of the Bathurst caribou herd should be adaptive with management goals that respond to future information on productivity, harvest, and other demographic indicators. Therefore, the model also generates predictions of all applicable demographic indicators as well as ranges of future herd sizes. The specific objectives of this exercise were as follows:

- Assess overall risk associated with various management actions and population level targets as a function of natural variation in herd productivity and hypothetical harvest levels.
- Assess the probability of future herd sizes as based upon management objectives as well as the power to detect changes in population size. The monitoring interval between surveys is explicitly considered since this affects the power to detect population change.
- Predict field-based estimates of fall bull-cow ratios, calf-cow ratios, and breeding female numbers to be used in an adaptive management context to further refine management goals and simulations as more data become available.

## **2. Methods**

I considered a set of scenarios of varying herd productivity concurrently with variation in adult female survival as influenced by harvest levels, in consultation with (ENR) biologists. Productivity is difficult to control or manage (compared to mortality/harvest) and therefore it was important to consider all simulations across a range of likely productivity levels.

### **2.1. Scenarios of adult productivity**

Ranges of adult productivity were based upon the range of observed values from the OLS model (Table 2). Productivity can be conceptualized as the proportion of breeding age females that produce a calf that survives to become a yearling. The other parameter that can affect productivity is pregnant adult female survival. If female survival is low then they are less likely to survive through pregnancy and less likely to produce a calf until weaning. This covariance is further explored in simulations (that consider the effect of harvest on females).



**Table 1: Productivity scenarios considered in simulations**

scenario	Sc	Fa	Productivity (Sc*Fa)
Low (2009) productivity	0.22	0.83	0.18
Average productivity	0.33	0.88	0.29
<1995 productivity	0.4	0.95	0.38
High productivity	0.6	0.95	0.57

The values in Table 2 were mainly estimated from the Bathurst herd in the decline phase (1985-2009) and higher productivity values are possible. Several NWT/NU herds increased rapidly in the early 1980s, and the George River herd grew from about 5000 in 1950 to about 600,000 in 1984 (Bergerud et al. 2008). To produce a higher productivity scenario I multiplied the highest level of fecundity observed (0.95 in 1994) times the highest calf survival observed (0.6 in 2006). This represents a “best case scenario” from estimated Bathurst herd demographic parameters. In comparison, values of productivity for the Western Arctic herd varied from 0.39 to 0.65 based upon field-based estimates and values estimated from a demographic model respectively (Haskell and Ballard 2007). The Western Arctic herd was mainly in an increase phase during the time it was monitored. Given this, the high productivity scenario would most directly correspond to a caribou herd in the increase phase.

The low productivity scenario is based upon the most recent 2009 estimates of productivity. I note that it is not the lowest productivity observed which was 0.04 in 2005. Low productivity in 2005 was a result of a variety of climatic/condition factors (Boulanger and Gunn 2007) and is not typical of the Bathurst herd. However, as discussed later, monitoring of productivity is an essential step of adaptive management. If low productivity levels are observed in subsequent years then this type of productivity scenario should be explored further. It should be noted that recent spring calf:cow ratios for the Bathurst herd were deceptively high; ratios like this can be inflated by high cow mortality (Boulanger et al 2010).

## **2.2. Estimates of base survival without hunting mortality**

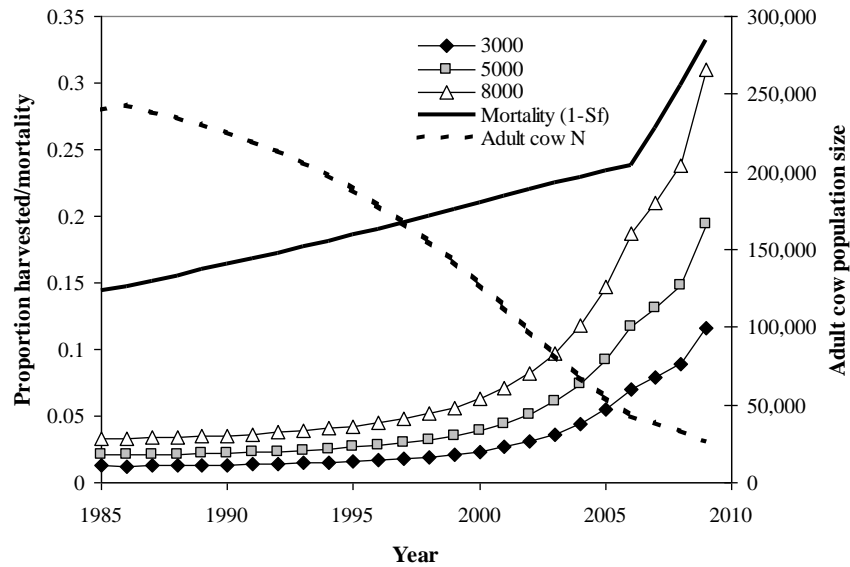
One of the main objectives of the simulations was to consider the reduction of adult survival based on different levels of hunting mortality. Therefore, a base level of survival with no hunting mortality had to be estimated. This estimate assumed that only natural mortality (i.e. predation) affected caribou survival. This was done using estimated harvest from the Dogrib Harvest Study from 1988-1993 as compared to estimates of population size from the OLS model for that time period (Table 2). The proportion of the population harvested, or the proportion of mortality caused by hunting was estimated by the Dogrib estimate of harvest divided by the OLS population size estimate. This estimate was then added to the OLS survival rate estimate (which included hunting mortality) to estimate what survival would have been if there was no hunting (and predation mortality was constant). From this, estimates of survival without hunting of 0.87 and 0.72 for cows and bulls was estimated.



**Table 2: Estimates of base cow and bull survival rates using OLS population and survival estimates and estimates of harvest from the Dogrib Harvest study**

Year	OLS N estimate		Harvest		Prop. N harvested		OLS Survival		Survival no harvest	
	bulls	cows	bulls	cows	bulls	cows	cows	bulls	cows	bulls
1988	105866	234567	4606	3318	4.35%	1.41%	84.5%	64.0%	85.87%	68.35%
1989	101303	230563	3855	4730	3.81%	2.05%	84.0%	64.0%	86.10%	67.81%
1990	97736	225611	8970	8450	9.18%	3.75%	83.6%	64.0%	87.38%	73.18%
1991	94728	219798	10073	11626	10.63%	5.29%	83.2%	64.0%	88.49%	74.63%
1992	92023	213238	9685	9046	10.52%	4.24%	82.8%	64.0%	87.01%	74.52%
1993	89301	205878	7712	13107	8.64%	6.37%	82.3%	64.0%	88.70%	72.64%
Average			7484	8380	8.56%	4.34%			87.26%	71.86%

One issue with the Dogrib harvest study based estimate of adult female survival was that the OLS model indicated that survival was declining (Figure 6), suggesting female survival was higher in 1985 than the period of 1988 to 1993 used for the estimates in Table 2. I therefore also considered an adult female survival estimate based upon the 1985 OLS estimate. The OLS estimate of female survival for 1985 was 0.856 and the corresponding proportion of the population harvested (assuming an 8000 cows per year harvested from the Dogrib Study (Table 2)) was approximately 3.3% (Figure 7). This resulted in an estimate of adult female survival without harvest of 0.89. This estimate was less based on data since there was no corresponding estimate of harvest for 1985. However, it potentially better represented historic adult female survival before the decline in population size. I therefore averaged the estimate of female survival without harvest from Table 2 and this estimate to arrive at an estimate of adult female survival without hunting of 0.88.



**Figure 7.** Trends in proportion of adult cows harvested annually as a function of model-averaged estimates of adult cow population size and hypothetical harvest levels for the Bathurst caribou herd (1985-2009) from (Boulanger et al. 2010). Model-averaged estimates of cow mortality rate (1- cow survival rate) for adult cows are also shown for reference.

As discussed later, the estimate of adult female survival of 0.88 assumes that mortality due to predation and other causes (i.e. 12%) have remained relatively constant since 1985. This assumption implies that predators have declined in unison with caribou so that they are predating upon the same relative proportion of the population. If predation rates relative to the population have increased then the estimate of natural mortality will be higher leading to a current “natural survival rate” with no hunting that is lower than 0.88. Unfortunately, data on predation rates or precise radio collared estimates of adult survival are not available to test this assumption. Implications of this assumption, and future approaches to test this assumption are discussed later in the report.

### 2.3. Process variation in demographic parameters

Boulanger et al. (2010) estimated biological or process variation in demographic parameters (Table 3). These estimates were also used for the harvest simulation. Directional change in parameters was not simulated beyond the effect of constant harvest on adult male and female survival rates.

**Table 3: Process variation for demographic parameters as detailed in Boulanger et al. (2010). This is the natural variation that occurs in these parameters as estimated from field data.**

Parameter	CV (individual)	CV (time)
Adult female survival ( $S_f$ )	0.10%	3.15%
Adult male survival ( $S_m$ )	0.10%	3.15%
Fecundity ( $F_a$ )	8.50%	1.39%
Calf survival ( $S_c$ )	12.70%	36.79%
Yearling survival ( $S_v$ )	12.70%	3.15%

#### **2.4. Initial population sizes for simulations**

The estimated population size for the Bathurst herd for 2009 and associated confidence interval was used as a starting point for simulations. For each simulation, an initial herd population size was generated based upon the point estimate ( $\hat{N} = 31,897$ ,  $SE=5345.1$ ,  $CI=20,965$  to  $42,829$ ) and the associated standard error to generate a random normal variable that was centered on the point estimate and was distributed similar to the confidence limit of the estimate. This random normal variable was then subdivided for adult cows and bulls based upon the 2008 estimated fall sex ratios. The proportion of the population that was yearling and calves was then estimated using an assumed stable age distribution that was a function of initial demographic parameter values. POP-TOOLS (Hood 2009) in excel was used to estimate stable age distributions for simulations.

#### **2.5. Harvest levels simulated**

One important question was whether the herd could tolerate a continued limited hunt of females, and the effect of a male dominated harvest on overall herd size. I therefore simulated harvest levels of 0 to 5000 caribou with varying proportions of females harvested.

Another management question was the effect of the shutdown of harvest in 2010 on herd recovery. It has been estimated that the harvest of caribou during the winter of 2009 was 7000 caribou (5000 cows and 2000 bulls). I simulated the effect of immediate shutdown of this harvest in 2010 (basically a simulation with no hunting), shutdown of harvest in 2011, 2012, and no shutdown of harvest.

#### **2.6. Assessment of simulation outcomes**

The goal of these simulations was not to forecast the exact time of recovery or the exact future population size of the Bathurst herd, but instead, to inform management on the probabilities of change in herd size based upon sets of management scenarios. To further this objective, simulations were evaluated in terms of the proportion of simulations that met specified management and monitoring-based herd population size ranges (Table 4). The proportions of simulations in this context could be interpreted as the relative probability of meeting a given management target.

Target levels were based upon the ability to detect changes in breeding female population size and management objectives. To estimate the power to detect change I assumed the

level of precision of breeding female estimates from future surveys would be similar to the 2009 survey. I then estimated the difference in breeding female population sizes required to detect change in population size using a 2-tailed t-test with an  $\alpha$  level of 0.1. In this case, the hypothesis would be a change in population size as opposed to a directional (negative or positive increase). Degrees of freedom for the t-tests were estimated using the formulas of Gasaway et al. (1986).

As discussed later, the t-test is not necessarily the most efficient method to compare estimates, however, this analysis was mainly intended to provide a general estimate of the power to detect trends which could be used to determine the appropriate intervals for calving ground based population estimates. An alternative is trend analysis from visual surveys of calving grounds. As discussed later, a power analysis on this approach is planned to compare with the t-test based method.

Breeding females are the best segment of the population to use for trend estimates, however, management targets, especially when harvest sex ratio is favored towards males, is based upon overall herd size. The t-test power analysis provided estimates of a lower breeding female population size needed to detect a decline and a higher breeding female population size needed to detect and increase based upon the 2009 estimate of 16,000 breeding cows. These lower and upper estimates of breeding females were then extrapolated to herd size using the 2008 bull-cow ratios and assumed proportion of females pregnant to set corresponding herd size targets.

Note that an inherent assumption with these targets is that sex ratio will not change appreciably in the short term so that breeding female population size can approximate future herd size. This may not be the case, however, and I suggest that these targets should be considered *incrementally as new information about herd status is collected*. For example, the relationship between breeding female population size and herd size can be incrementally adjusted as new data on bull-cow ratios (from fall composition surveys) is collected. In addition, once another calving ground photo survey is conducted, these targets could be changed.

**Table 4: Levels of target populations for management used for simulations. Detectability is based upon the assumption that future spring calving photo surveys have the same level of precision as the 2009 survey. The correspondence of breeding female and total herd size is based upon the estimate 2008 fall sex ratio.**

Management scenario and objectives	Target herd size range	Breeding female range	Comments
Detectable increasing herd size	>44,000	>23,000	Statistically detectable increase
Potential increase (not detectable)	32,000-44,000	16000-23,000	Potential increase but not statistically significant
Potential decline (not detectable)	23,000-32,000	12000-16000	Potential decline that is not statistically detectable
Decline first detected	16,000-23000	8000-12000	Decline becomes detectable
Herd in severe decline (detectable)	<16,000	<8,300	Approximately half the 2009 estimated size suggesting herd is still declining sharply.

Another pertinent question for management was the timelines in which the herd might meet target herd sizes and the corresponding intervals in which management strategies should be evaluated. As time progresses, the herd size changes therefore making apparent increases or declines more evident. Therefore, the interval for evaluation of population size (i.e. a spring calving ground survey) was of interest in evaluating management targets as proposed in Table 4. The probabilities of the management targets were therefore evaluated at 3, 6, and 9 years which correspond to possible intervals in which subsequent calving ground surveys might be conducted. These result help determine the optimal monitoring intervals needed to ensure detection of various herd size levels.

## 2.7. Predicted demographic trends and field based estimates

A key use of this model is not just predictions in terms of population size but also predictions of field based measurements to further assess herd status. Therefore, I also generated predictions of most of the field-based measurements such as calf-cow ratios and bull-cow ratios. Breeding female population size was also predicted given that it was influenced by both overall herd size and the assumed productivity scenario, and level of fecundity.

The effect of harvest was explicitly considered for these estimates. For example, it is assumed that harvest occurs in mid winter so that fall based measurements will not be affected as much as spring based measurements. Subtracting harvest from population sizes between the fall and spring estimates simulated this effect.

## 3. Results

I used stacked bar charts that displayed the simulation outcomes in terms of productivity scenarios (Table 1), management targets (Table 4), and monitoring intervals (years until

next calving ground survey) for the most applicable simulations. The idea of the bar-charts is to convey the probabilistic nature of the stochastic model outcomes in a graphical fashion. The colors of the stacked hopefully convey the relative risk of each outcome (red="very high risk" and green="less risk").

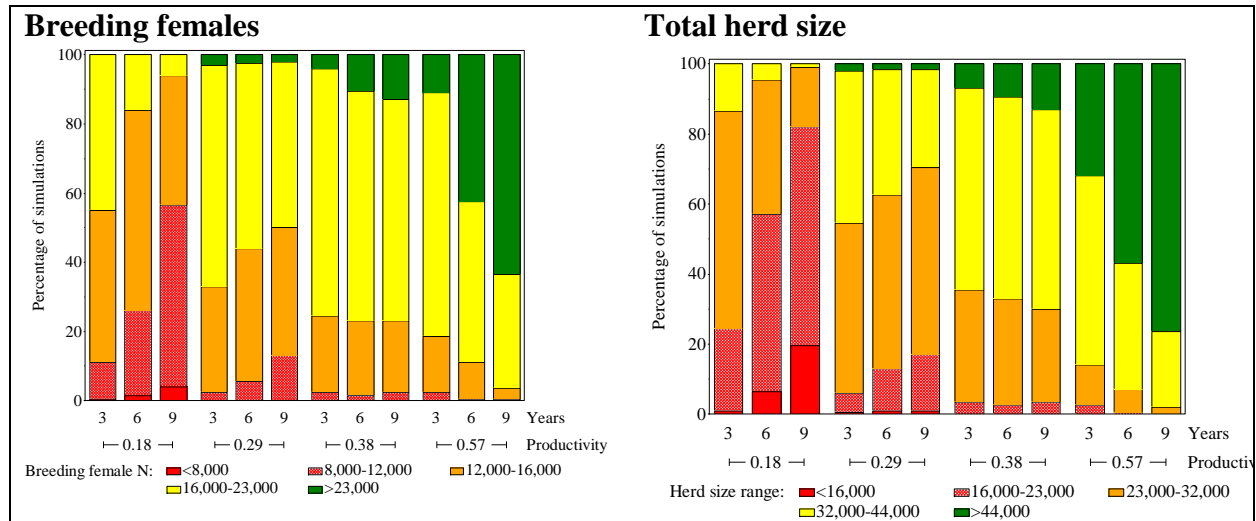
There is a lot of information displayed when variation in productivity, monitoring interval, population target levels, and harvest levels are considered simultaneously. The stacked bar-charts efficiently summarize the range of simulation outcomes across a range of assumed productivities and monitoring intervals. *While these contain a lot of detail, they can also be viewed with less detail.* Basically, a graph that has a lot of red means that the given harvest scenario has a high risk of rapid decline compared with a graph that is mainly yellow or green. Some combinations of higher calf productivity and low harvest can result in a stable or increasing herd; these could serve as estimators of a sustainable harvest under those conditions. So, this allows interpretation of risk of management strategies without detailed attention to individual simulation outcomes.

### **3.1. Simulations with no harvest.**

Simulations with no harvest of either bulls or cows demonstrate that productivity must increase to levels that were seen before 1995 (0.38) for the herd to recover in over 50% of the simulations. If productivity stays low (2009 levels-0.18) then the herd will continue to decline with the majority of simulations in the "red" zone by year 9. In contrast, with high productivity (i.e. 2006) the herd could be in the "green zone" (i.e. increasing) for the majority of simulations in 9 years (Figure 8).

Figure 8 also shows that if productivity is moderate then there is little apparent change in simulation results with survey interval. For example, there would be minimal chance of detecting change in the herd for productivity levels of 0.29 and 0.38 given that amber (declines) or yellow (increases) are not statistically detectable. However, if productivity is low or high, the proportion of simulations at different herd levels changes more dramatically as a function of monitoring interval. For example, a negative trend in population size (red) would be detectable in the majority of simulations by year 6 if productivity were low, and a positive (green) increase in population size would be detectable by year 6 if productivity was high.

In reality, productivity will probably vary over time so that the actual outcome would be a combination of each of the scenarios. This further demonstrates why apparent productivity (i.e. calf-cow ratios) have to be used with caution and are best considered in a model context (i.e. OLS model) when evaluating the status of the herd at different time intervals.



**Figure 8:** Results of simulations with no harvest (male or female) as a function of mean productivity and years since 2009. Each color on the bar denotes the relative proportion of simulations that resulted in a given range of herd sizes/management targets with the estimates of 16000 cows and 32000 caribou as a baseline. Declines that are colored red and increases that are colored green are statistically detectable. For these simulations adult female survival was 0.88 since no harvest was simulated. Productivity estimates correspond to productivity scenarios as listed in Table 1.

Figure 8 also illustrates that the breeding female and herd size status are almost identical. This is because the no harvest simulations have constant survival rates and therefore there is minimal change in the population sex ratio. Also, female mortality predominantly drives the herd size (in comparison to bull mortality) given that no effects of sex ratio on breeding success were simulated.

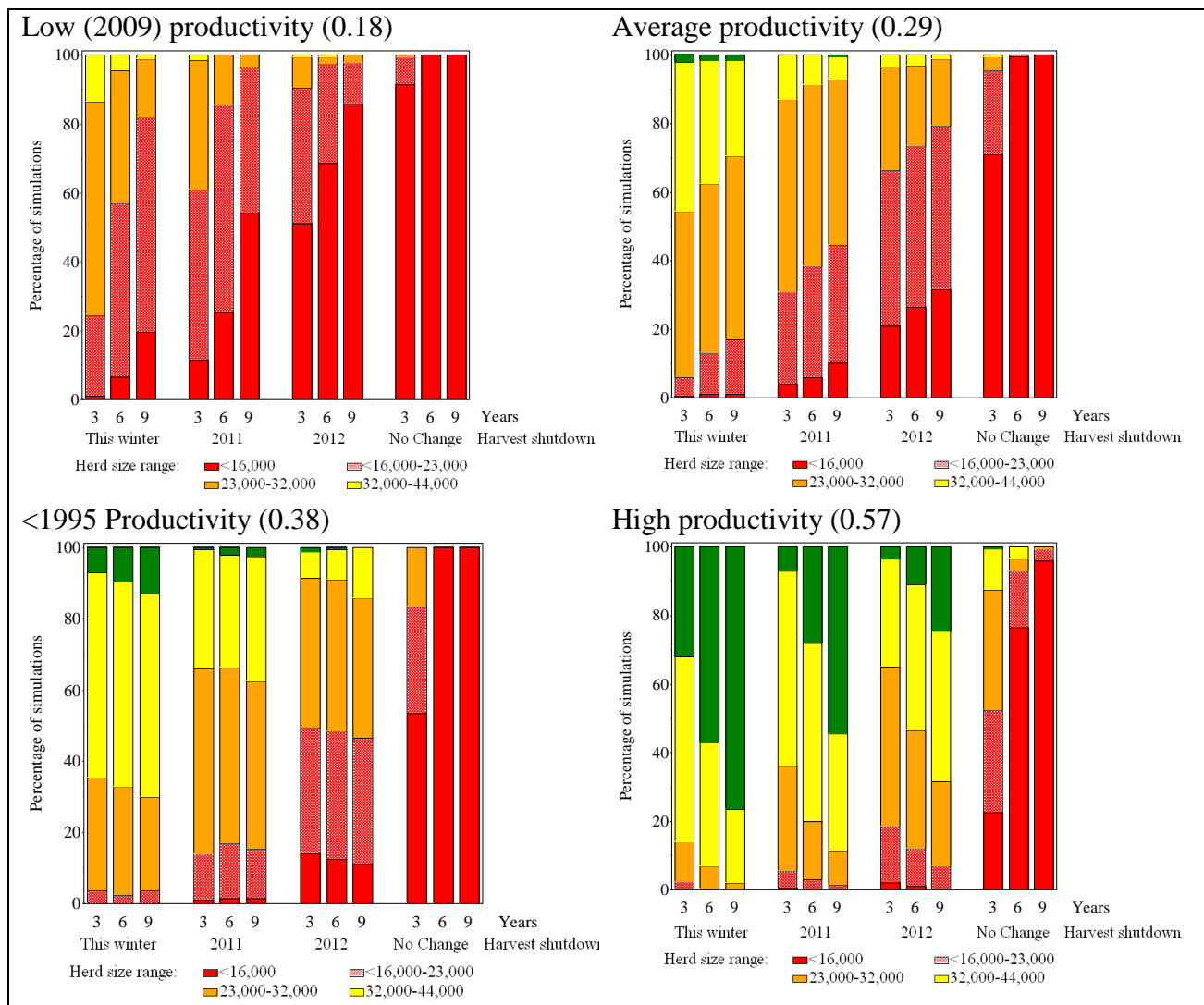
### 3.2. Simulations with incremental change in current estimated harvest

The estimated harvest of caribou for the winter of 2009 was 7000 with 2000 bulls and 5000 cows harvested. I ran simulations where this harvest was continued for 1 year (until 2011), 2 years (2012), and compared this to a scenario of no harvest and a scenario with continued harvest (Figure 9).

The results suggest that with average productivity and no harvest shutdown, the herd would experience a critical decline in the majority of simulations evaluated at year 3, and all simulations evaluated at year 6 and 9. With an immediate harvest shutdown, approximately 40% of the simulations suggested an increase at year 3. As the year of harvest shutdown increased, the proportion of simulations in which the herd increased was reduced, suggesting higher risk of a severe decline with delays in changing harvest strategies.

Higher productivity partially offsets the effect of continued harvest. However, note that even with high productivity the majority of simulations suggest a declining population for the no change in harvest scenario (Figure 9).



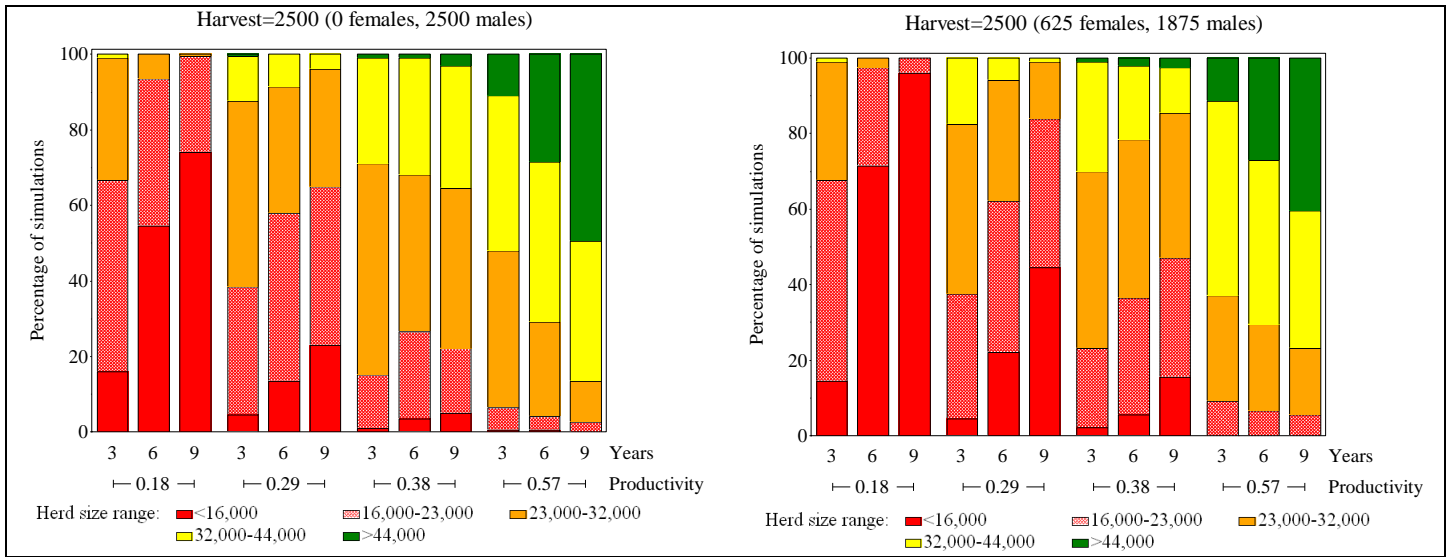


**Figure 9:** Results of simulations with differing scenarios for when the caribou harvest was shut down (reduced to 0 caribou annual harvest) across the “extremes” of productivity. Each color on the bar denotes the relative proportion of simulations that resulted in a given range of herd sizes/management targets. For these simulations productivity was set at the low (2009) or high productivity levels (Table 1).

### 3.3. Simulations with constant harvest

#### 3.3.1. Annual harvest of 2500 caribou

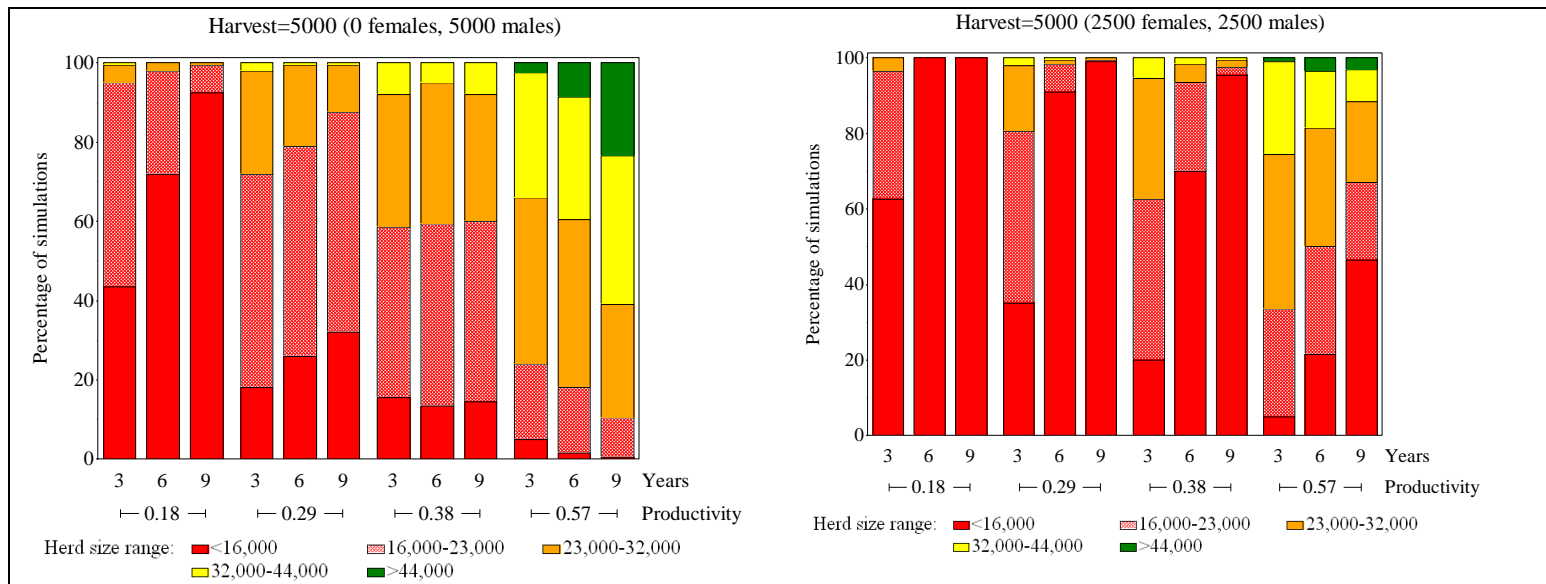
Simulations with harvest rates demonstrated the high sensitivity of herd size to any level of female harvest, and how high productivity buffers the effects of female harvest (Figure 10). For example, with an annual harvest of 2500, there was noticeable change in simulation outcomes to a limit female hunt of 625 cows when productivity was low. But when productivity was higher there was minimal change in simulation outcomes.



**Figure 10:** Results of simulations with an annual harvest of 2500 caribou (with 0 or 625 females harvested) as a function of mean productivity and years since 2009. Each color on the bar denotes the relative proportion of simulations that resulted in a given range of herd sizes/management targets. Productivity estimates correspond to productivity scenarios as listed in Table 1.

### 3.3.2. Annual harvest of 5000 caribou

Simulations also demonstrate that regardless of productivity levels, the herd could not tolerate an expanded harvest of 5000 caribou even if only males were harvested. Even with high productivity the majority of simulations suggest herd decline that increases as the monitoring interval increases. If 2500 females are harvested the majority of simulations are in the “red zone” (Figure 11), i.e. there is a high risk of rapid decline.

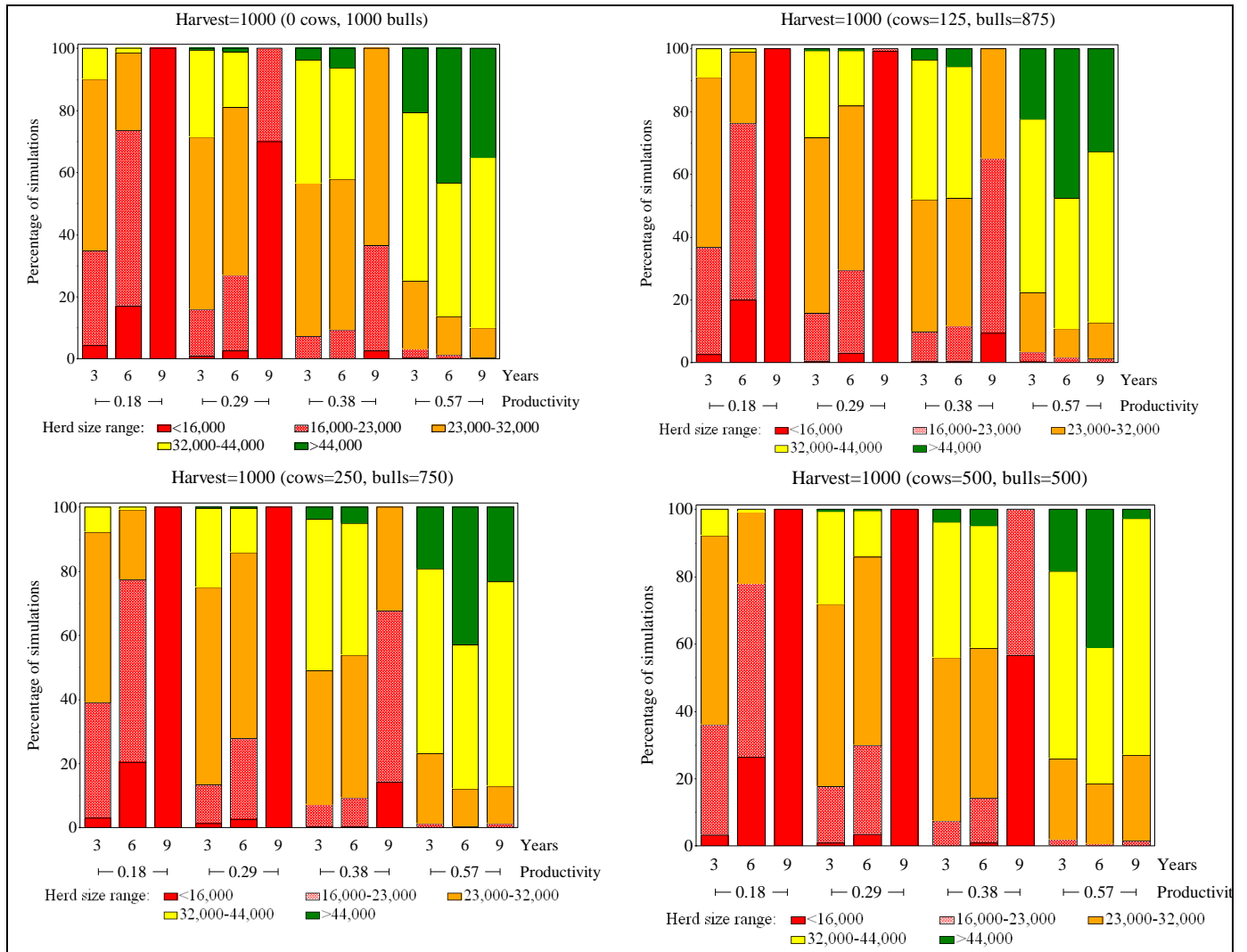


**Figure 11:** Results of simulations with an annual harvest of 2500 caribou (with 0 or 625 females harvested) as a function of mean productivity and years since 2009. Each color on the bar denotes the relative proportion of simulations that resulted in a given range of herd sizes/management targets. Productivity estimates correspond to productivity scenarios as listed in Table 1.

### 3.3.3. Annual harvest of 1000 caribou

Simulations with an annual harvest suggest that if productivity is low the population will decline irrespective of the cow harvest level. In contrast, there is also minimal effect of moderate cow harvest ( $\leq 250$  cows) if productivity is high (Figure 12). This type of outcome could be used to consider a sustainable harvest for the herd under those conditions. The main effect of cow harvest can be seen in the middle levels of productivity. In this case, the probability of a “red decline” increases when productivity is 0.29 (evaluated at 9 years) even with a cow harvest level of 125 caribou. A less pronounced probability of decline is evident when productivity is 0.38.

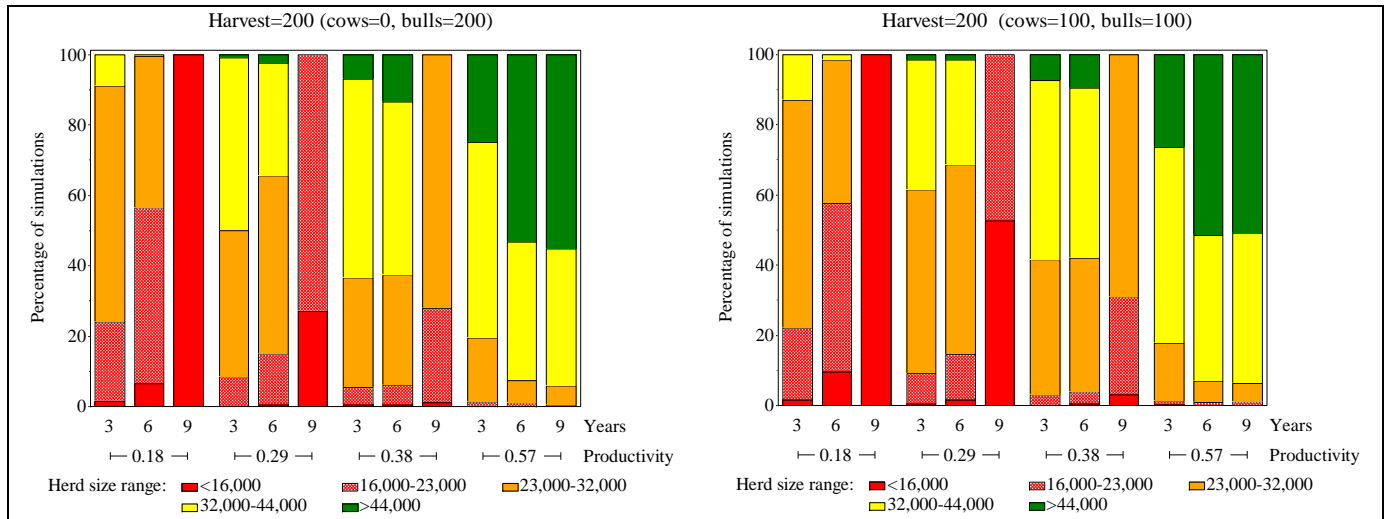
The overall effect of an annual harvest of 1000 caribou is a reduced probability of overall recovery (the green zone) across all levels of productivity (if Figure 12 is compared to Figure 8 where 0 harvest is simulated).



**Figure 12:** Results of simulations with an annual harvest of 1000 caribou (with varying numbers of females harvested) as a function of mean productivity and years since 2009. Each color on the bar denotes the relative proportion of simulations that resulted in a given range of herd sizes/management targets. Productivity estimates correspond to productivity scenarios as listed in Table 1.

### 3.3.4. Annual harvest of 200 caribou

Simulations with an annual harvest of 200 suggest minimal influence of harvest to population levels compared to the effect of variation in productivity. In this case, the natural variation in demographic parameters is obscuring any detectable effect of harvest (Figure 13).

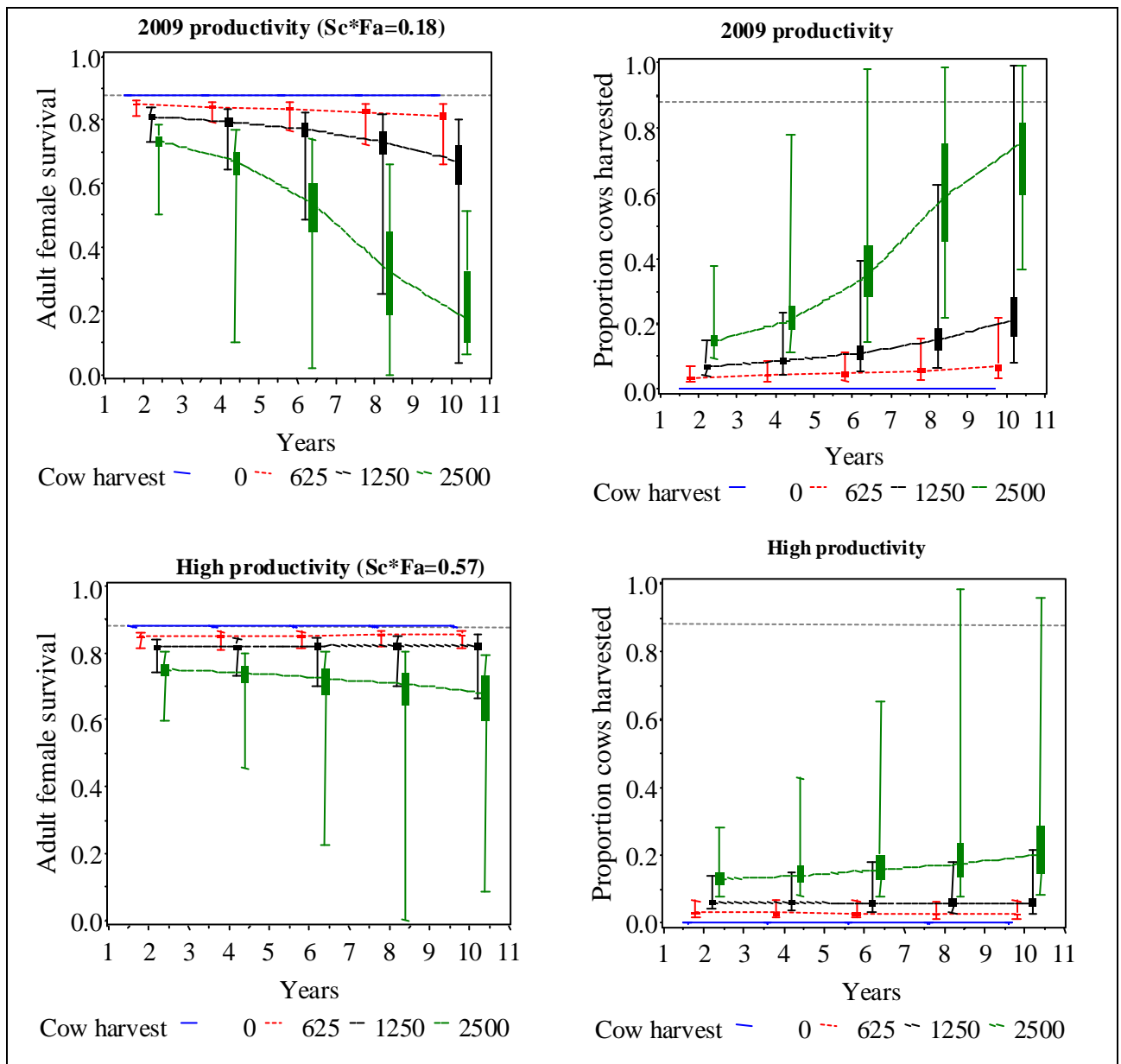


**Figure 13** Results of simulations with an annual harvest of 200 caribou (with varying numbers of females harvested) as a function of mean productivity and years since 2009. Each color on the bar denotes the relative proportion of simulations that resulted in a given range of herd sizes/management targets. Productivity estimates correspond to productivity scenarios as listed in Table 2

### 3.4. Predicted trends in demographic parameters

#### 3.4.1. Adult female survival

One of the best illustrations of the effect of harvest on the population is trends in adult survival caused by varying levels of harvest and changing adult female population sizes. Figure 14 illustrates the effect of low productivity and a constant harvest on adult female survival. When productivity is low the population is more likely to decrease and therefore constant harvest effort reduces adult survival (Figure 14).



**Figure 14:** Trends in adult female survival for the low (2009) productivity and high productivity scenarios. Boxplots show the main grouping (boxes) and range of estimates (error bars) from multiple simulation runs. When productivity is low population size decreases sharply and the effect of proportional harvest on adult female survival is increased.

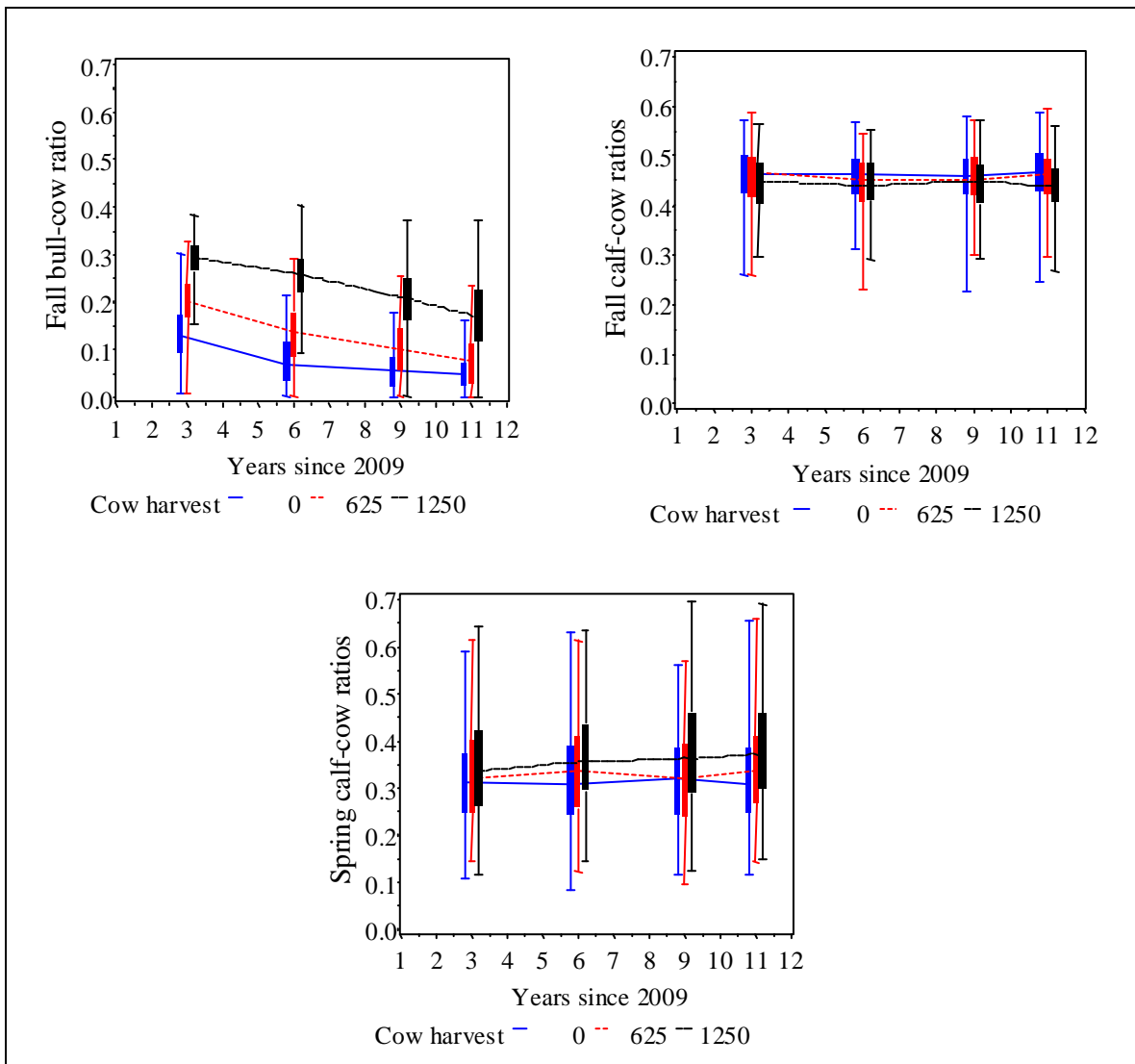
### 3.5. Predicted trends in field based estimates

One of the most important uses of the model is the generation of predictions of indicators of herd status. For example, with the average productivity scenario, the bull-cow ratio decreases as larger numbers of bulls are harvested relative to cows (Figure 15). If even numbers are harvested then the bull-cow ratio is similar to estimates in 2009. I suggest

that these predictions could be used to set lower limits for bull-cow ratios and estimate the appropriate time interval to estimate these limits.

In contrast, fall calf-cow ratios are not as affected by cow harvest since cow harvest occurs usually in the winter months after fall composition surveys. In contrast, spring calf-cow ratios are increased as a function of cow harvest since the number of cows each spring is potentially reduced compared to the number of calves (assuming harvest occurs after calf weaning).

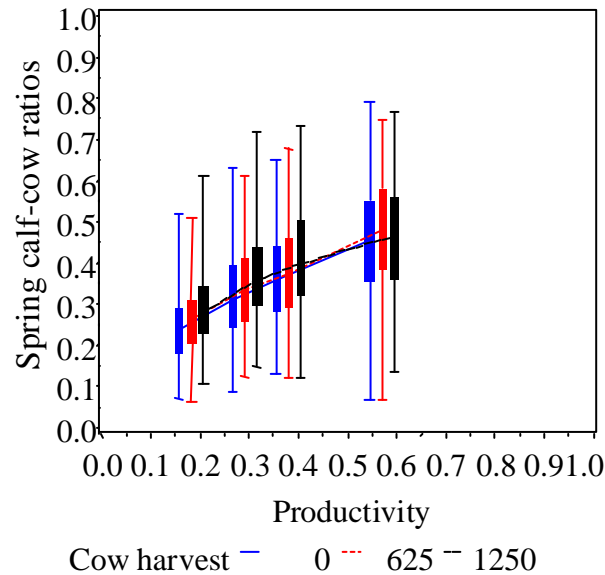
A large number of predictions and scenarios are possible and I suggest that model predictions are further refined based upon decisions made about harvest levels.



**Figure 15:** Predicted trends in field indicators for the average productivity scenario and a harvest of 2500 caribou with varying numbers of cows harvested. Boxplots show the main grouping (boxes) and range of estimates (error bars) from multiple simulation runs.



The model also can be used to assess predictions of calf-cow ratios based upon levels of productivity and determine the influence of harvest rate of estimates of productivity. Once again, these predictions could be used in unison with the OLS model to assess where the population may be in terms of overall status (i.e. earlier bar chart figures)(Figure 16).



**Figure 16:** The correspondence of spring calf-cow ratios and productivity as a function of cow harvest levels given an annual harvest of 2500 caribou. Boxplots show the main grouping (boxes) and range of estimates (error bars) from multiple simulation runs.

## 4. Discussion

This report presents an overview of the inputs and outputs of the stochastic simulation model. The following points should be considered when interpreting the simulations in this report.

- *Higher levels of harvest (2,500-5,000-7,000) from the Bathurst herd can only lead to further rapid decline.* Even with high calf productivity, the herd could not recover at this level of harvest. Therefore, immediate reduction of harvest is essential. At some of the lower harvest levels assessed, (200-500 caribou), there is a much lower likelihood of rapid decline, and the herd's likely trend is more variable depending on calf productivity.
- *Simulations illustrate that the ability of the herd to recover is very much influenced by productivity, not just by harvest levels.* Harvest can be managed, while productivity is strongly influenced by weather and is less subject to human control. Given this it is difficult to forecast recovery just based on harvest management. Any harvest management strategy should be adaptive in which goals/targets/harvest are set based upon levels of productivity observed from field-based estimates.

- *Better estimates of true harvest level are essential to help refine herd recovery scenarios and determine the relative impact of harvest on adult female survival.* It would be possible to use harvest as a direct model input to allow better assessment of harvest levels on herd recovery. In this case, model runs could be focused on exact harvest levels rather than being run across a wide range of potential harvest levels. Basically, reporting of harvest rates is one of the fundamental requirements of an adaptive management program. Harvest levels should be a model input rather than a model estimate.
- *The appropriate interval to evaluate herd status (i.e. spring calving ground surveys) should be considered in the context of observed productivity levels, relative risk, and power to detect change in population size.* The simulation model outcomes and the OLS deterministic model can be used to further refine management strategies as more information becomes available.
- *This model does not simulate any effects of reduced breeding success based on bull-cow ratios.* Given this, threshold levels of bull-cow ratios should be also established to ensure reasonable sex ratios as discussed in (Myserud et al. 2002). The model can generate predicted bull-cow ratios that can then be used to evaluate the relative risk of male dominated harvest strategies to the overall population. As mentioned earlier, power analyses can be used to determine the relative power to detect a threshold bull-cow ratio for a given harvest sex ratio, productivity, and management regime.
- *The simulations assume that natural mortality rates have remained relatively constant.* If predation has also increased over time, or if predators took the same number of caribou each year as the population declined, then the adult female survival estimation without hunting will be less than 0.88. This will result in reduced population vigor and a higher likelihood of population decline for each of the scenarios. The only way to test this assumption would be to substantially increase the number of collared caribou to allow better estimates of natural survival. In addition, better estimates of harvest would allow a better assessment of the proportional impact of hunting on the herd. This general assumption, and its implication, further argues *for an adaptive management approach* in which simulation runs and population targets are incrementally re-evaluated as more data becomes available.
- *Power analyses demonstrate limited power to detect moderate changes in herd size and therefore herd status should be evaluated also using productivity and survival rate estimates.* This also demonstrates that herd size along with productivity and adult survival should be simultaneously used to evaluate herd status through the framework of a population model. Model based methods (Boulanger et al 2010) can help interpret calf-cow ratios, bull-cow ratios that are influenced by many demographic factors. Note that the OLS model will generate a predicted population size as new data such as calf-cow ratios are produced. The model in this exercise generates predictions of all field based estimates. Power analyses can be used to further optimize appropriate intervals to sample for composition or sex ratio based upon assumed demographic/management scenarios.
- *Biological variation creates uncertainty in many outcomes and recovery scenarios are best interpreted as probabilities rather than estimated future population sizes.* It

should be evident that estimation of exact future population sizes is not possible given uncertainty in various current aspects of herd demography.

- *Herd management targets are mainly in reference to the 2009 estimate and should be revised as new information on herd status becomes available.* For example, the “increasing” herd status should not be interpreted to mean that the herd has recovered completely.
- *Regression analyses of relative counts from visual calving surveys presents an alternative way to assess trends in herd status.* Future power analyses of this approach in comparison to the paired t-test, and regression of calving ground estimates will be conducted.
- *The modeling results could be used to assess the size of a sustainable harvest if calf productivity improves.* In the past, herds growing rapidly were able to tolerate a significant harvest and still increase. Unfortunately, caribou and reindeer are for the most part declining, which suggests that high productivity is not very likely in the near future.

## **5. Literature cited**

- Bergerud, A. T., S. N. Luttich, and L. Camps. 2008. The return of caribou to Ungava. McGill-Queen's University Press, Montreal and Kingston, Ontario.
- Boulanger, J., and A. Gunn. 2007. Exploring possible mechanisms for the decline of the Bathurst herd of barren-ground caribou using demographic modeling. Department of Environment and Natural Resources, Government of the Northwest Territories.
- Boulanger, J., A. Gunn, J. Adamczewski, and B. Croft. 2010. Exploration of the decline of the Bathurst caribou herd using a data-driven demographic model. Journal of Wildlife Management Submitted.
- Gasaway, W. C., S. D. Dubois, D. J. Reed, and S. J. Harbo. 1986. Estimating moose population parameters from aerial surveys. Biological Papers of the University of Alaska No 22:1-108.
- Haskell, S. P., and W. B. Ballard. 2007. Modeling the Western Arctic caribou herd during a positive growth phase: Potential effects of wolves and radio collars. Journal of Wildlife Management 71:619-627.
- Hood, G. M. 2009. PopTools version 3.0. CSIRO, <http://www.cse.csiro.au/poptools,Canberra>, Australia.
- Mysterud, A., T. Coulson, and N. C. Stenseth. 2002. The role of males in the dynamics of ungulate populations. Journal of Animal Ecology 71:907-915.
- Vors, L. S., and M. S. Boyce. 2009. Global declines of caribou and reindeer. Global Change Biology 15: 2626-2633).