

Figure 1. Survey area and strata defined for the Ahlak calving ground surveys, June 2006-08.

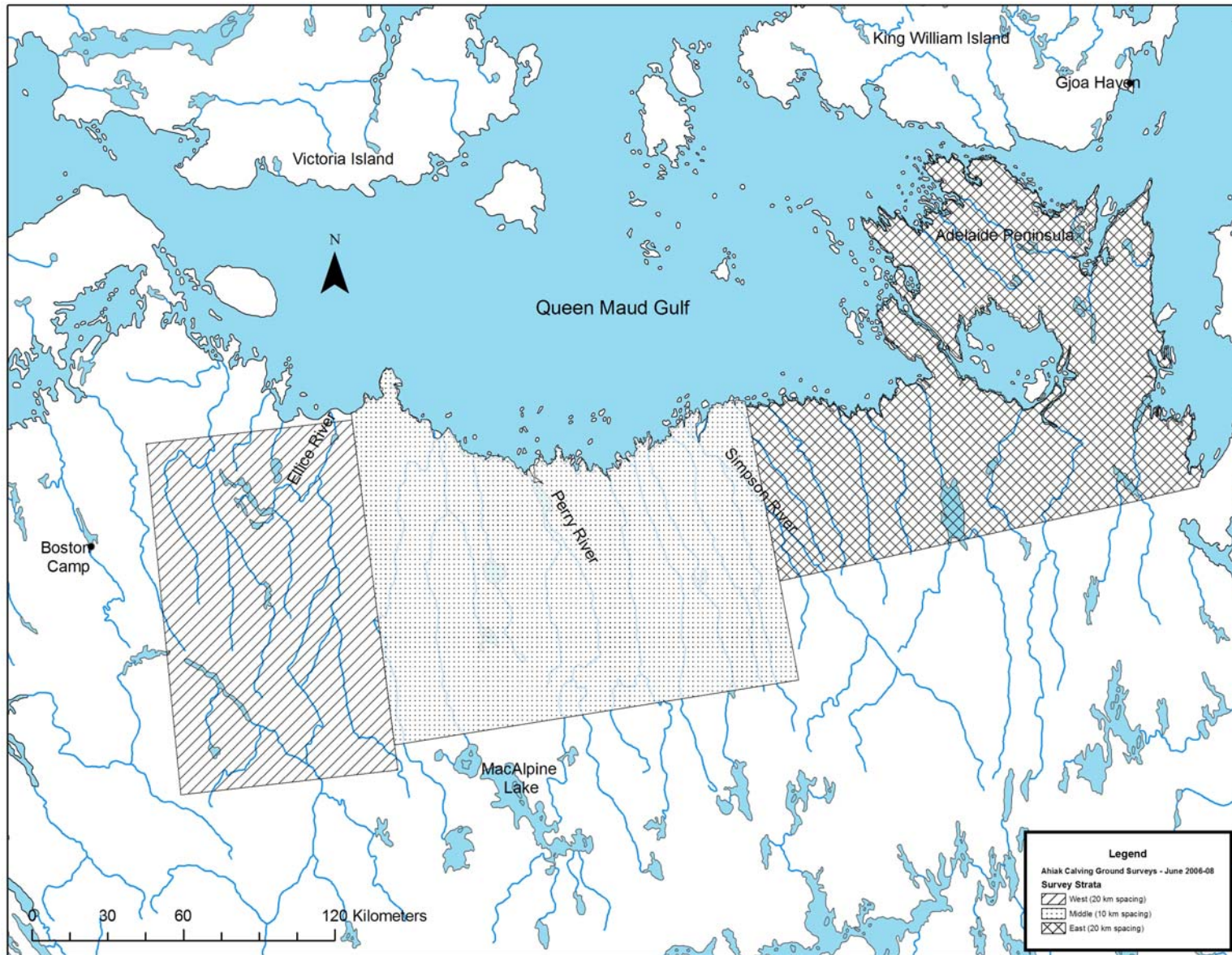


Figure 2. Flight lines flown 13-16 June 2006.

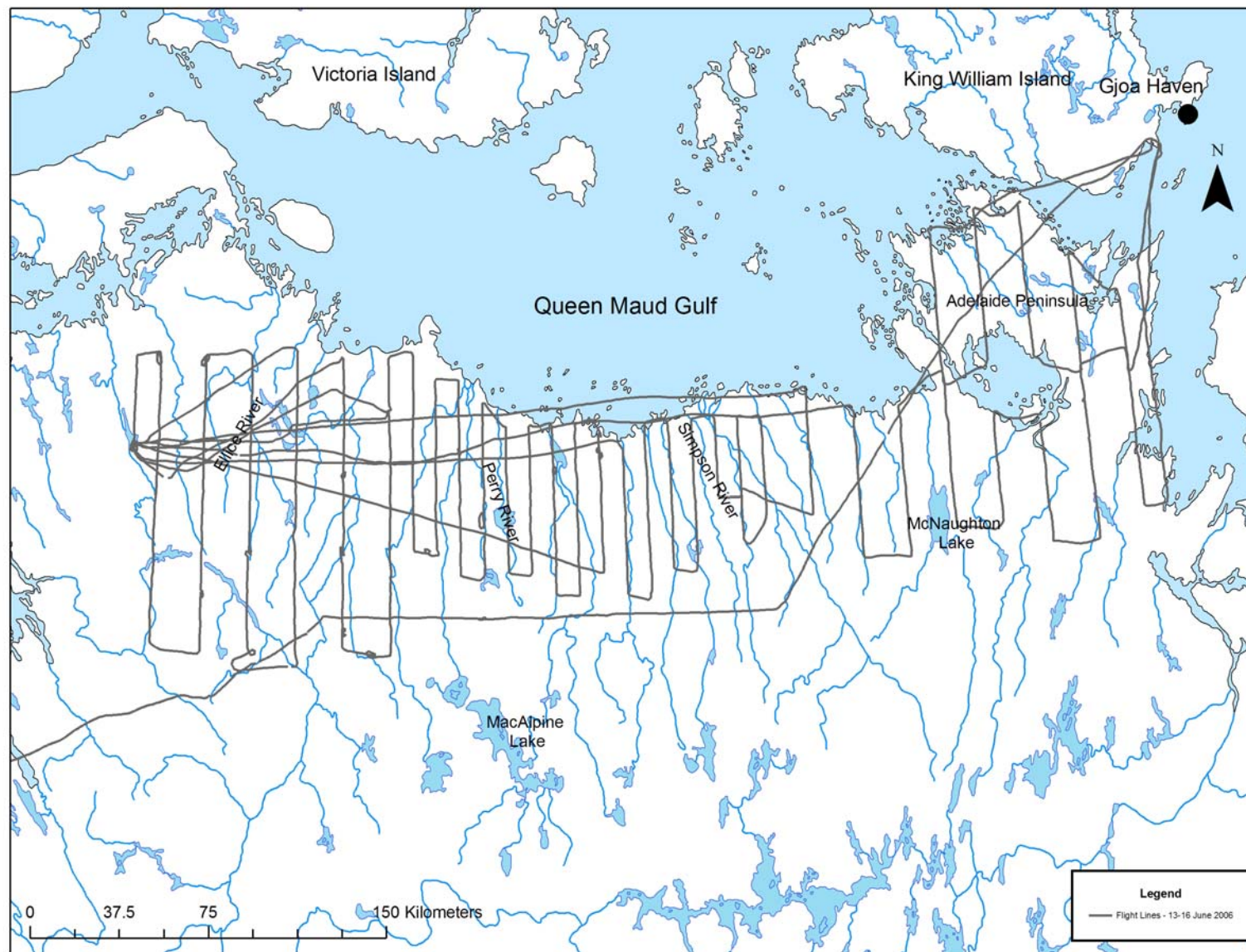




Figure 3. Flight lines and composition of caribou observed on transect summarized by 10-km transect segment, 13-16 June 2006.

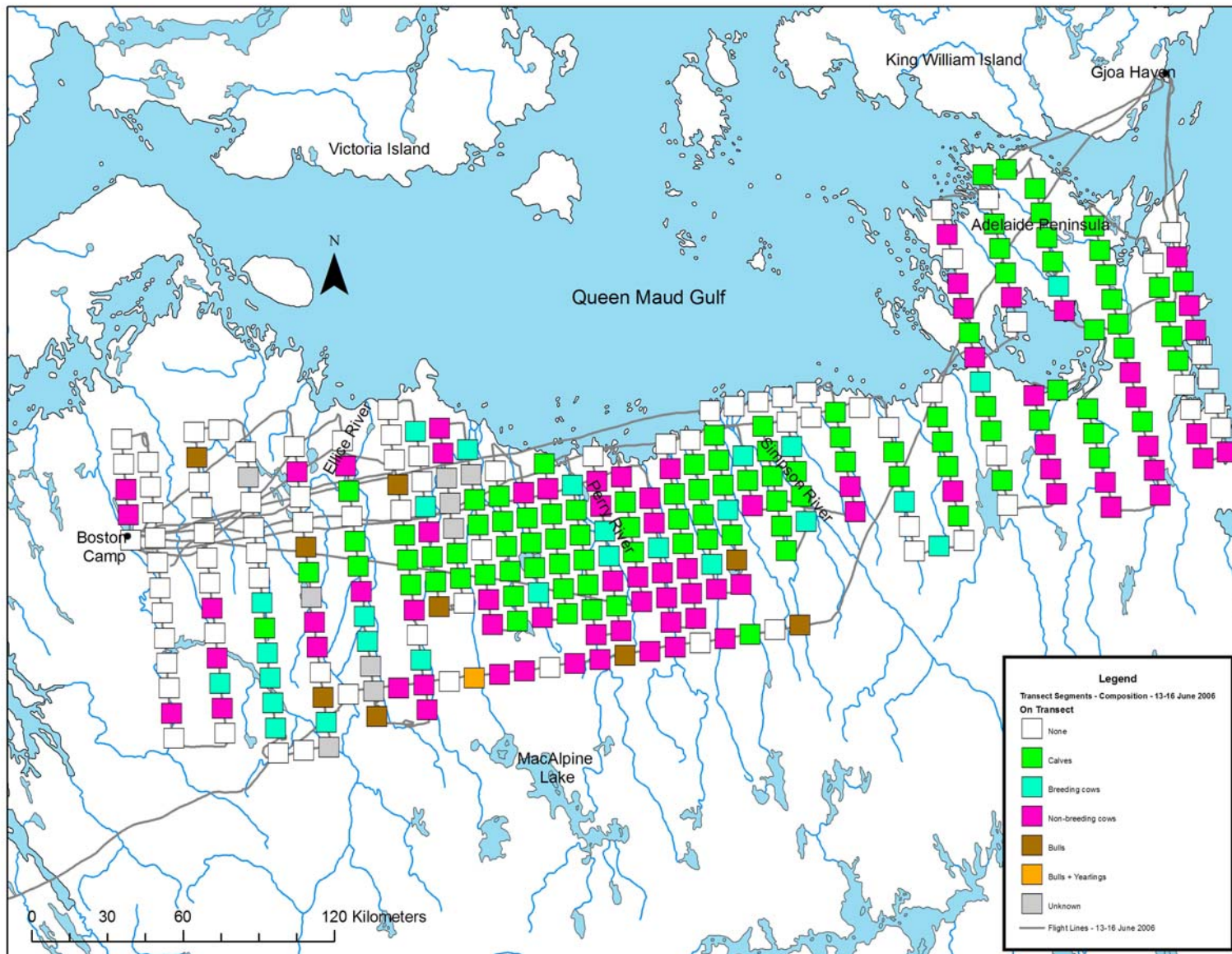


Figure 4. Flight lines and distribution of cows observed on transect summarized by 10-km transect segment, 13-16 June 2006.

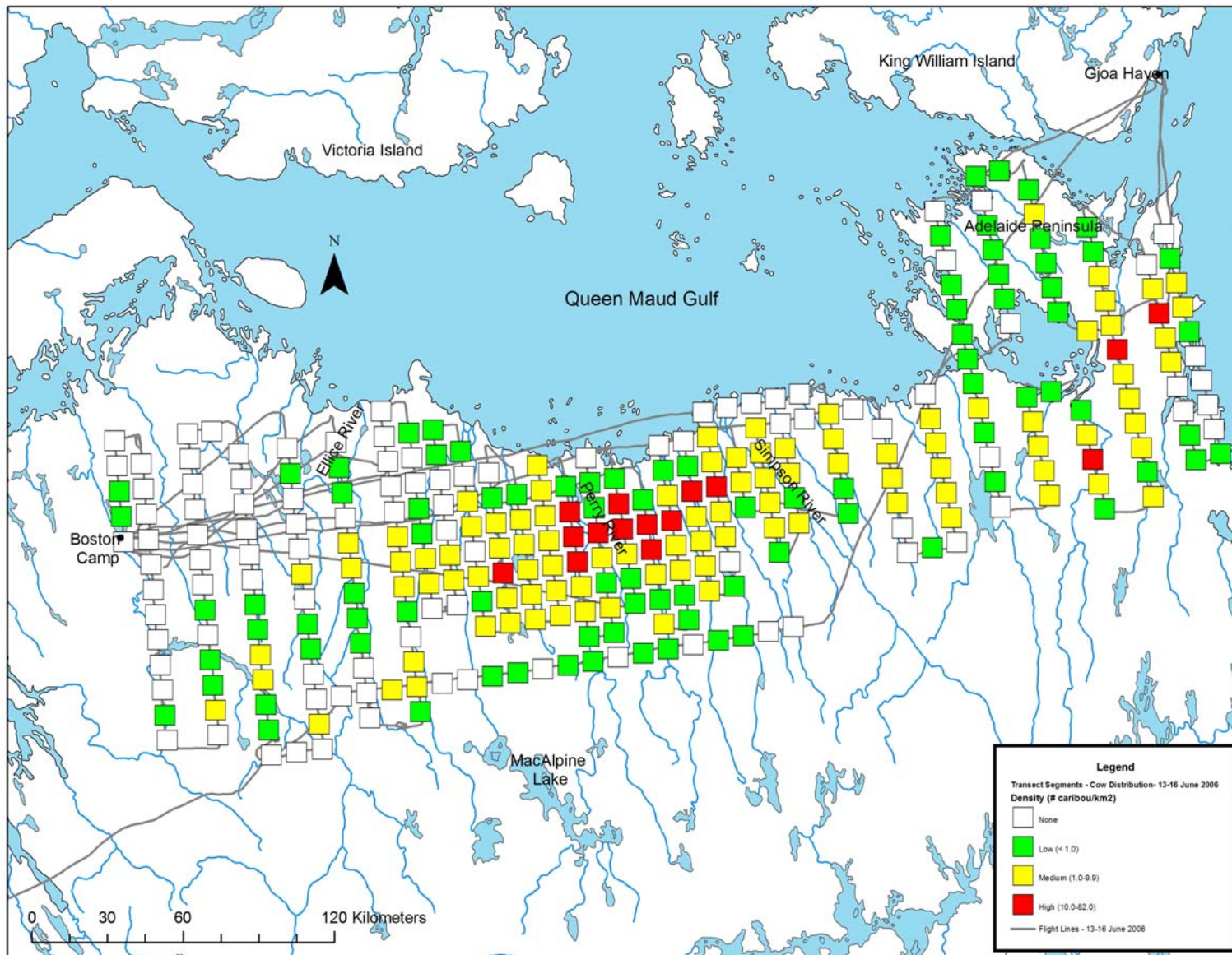




Figure 5. Flight lines and distribution of breeding cows observed on transect summarized by 10-km transect segment, 13-16 June 2006.

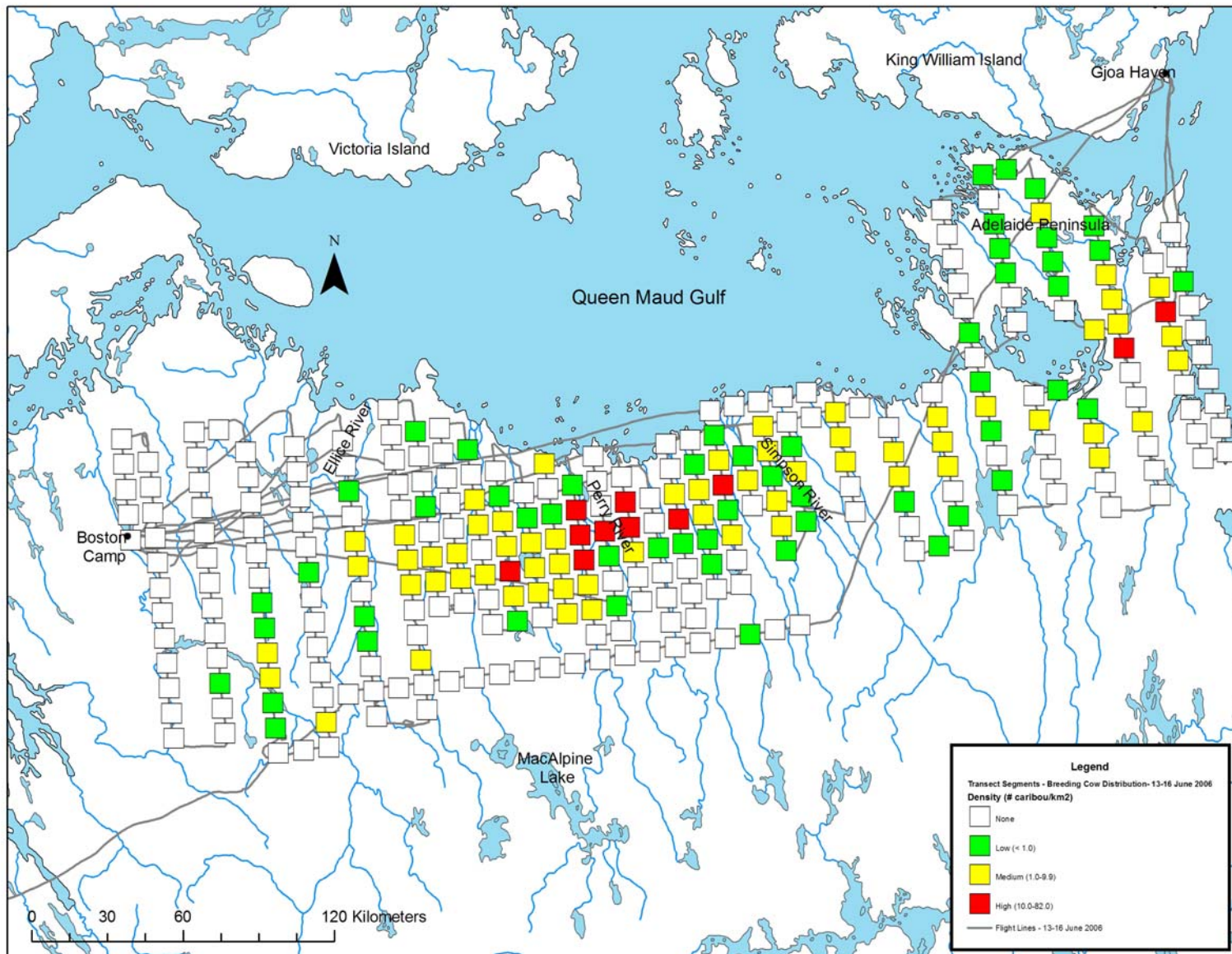


Figure 6. Flight lines and distribution of calves observed on transect summarized by 10-km transect segment, 13-16 June 2006.

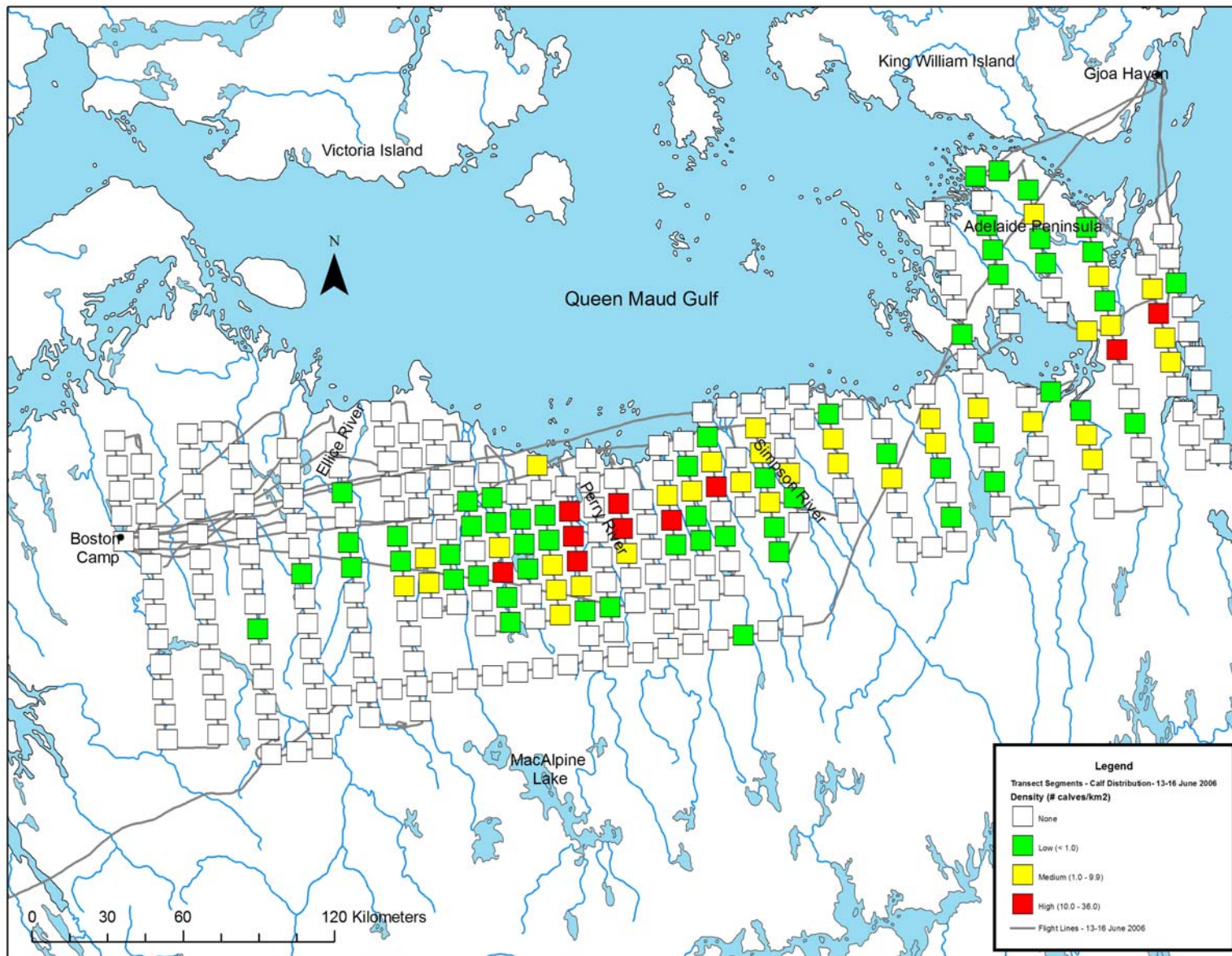




Figure 7. Flight lines and other wildlife observed on and off transect, 13-16 June 2006.

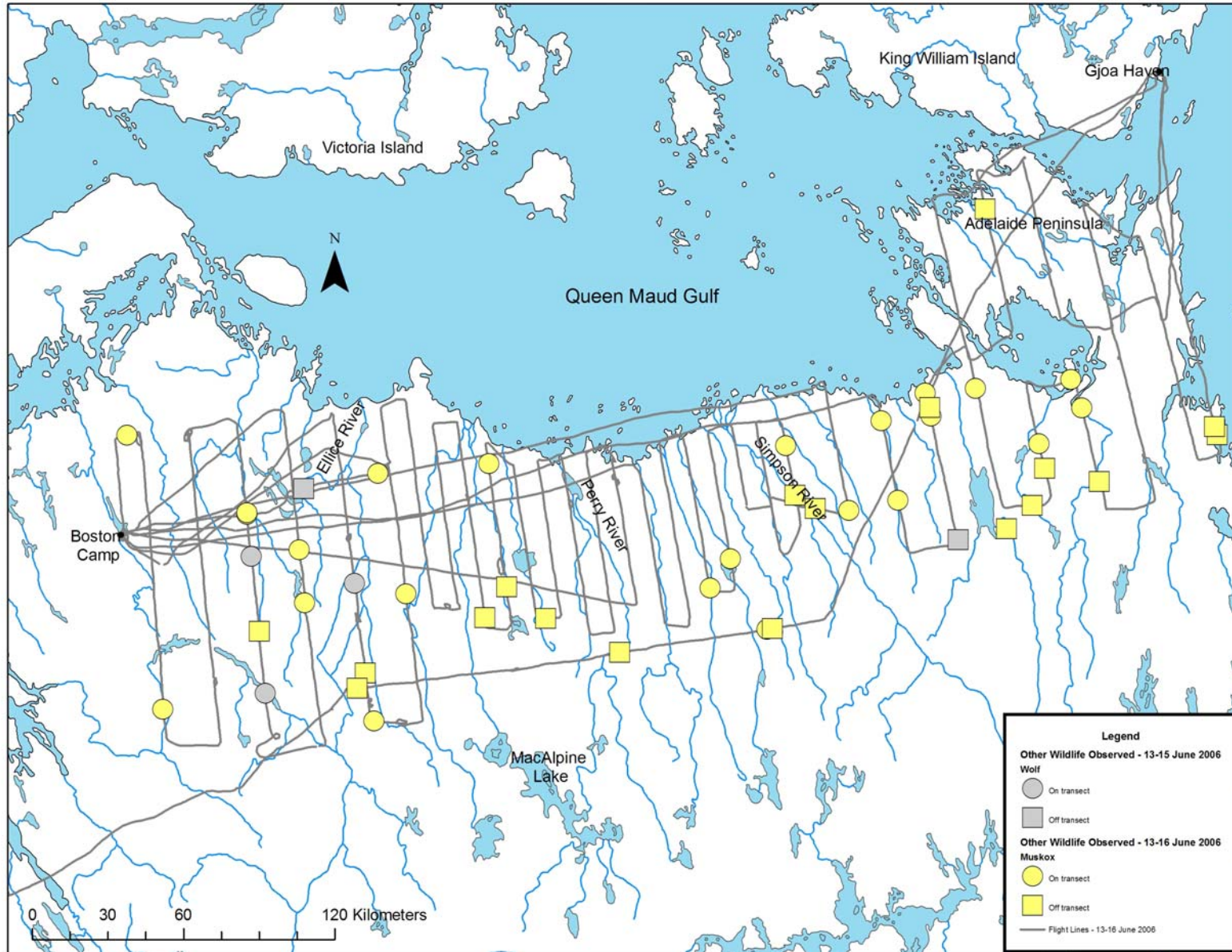


Figure 8. Flight lines flown 14-18 June 2007.

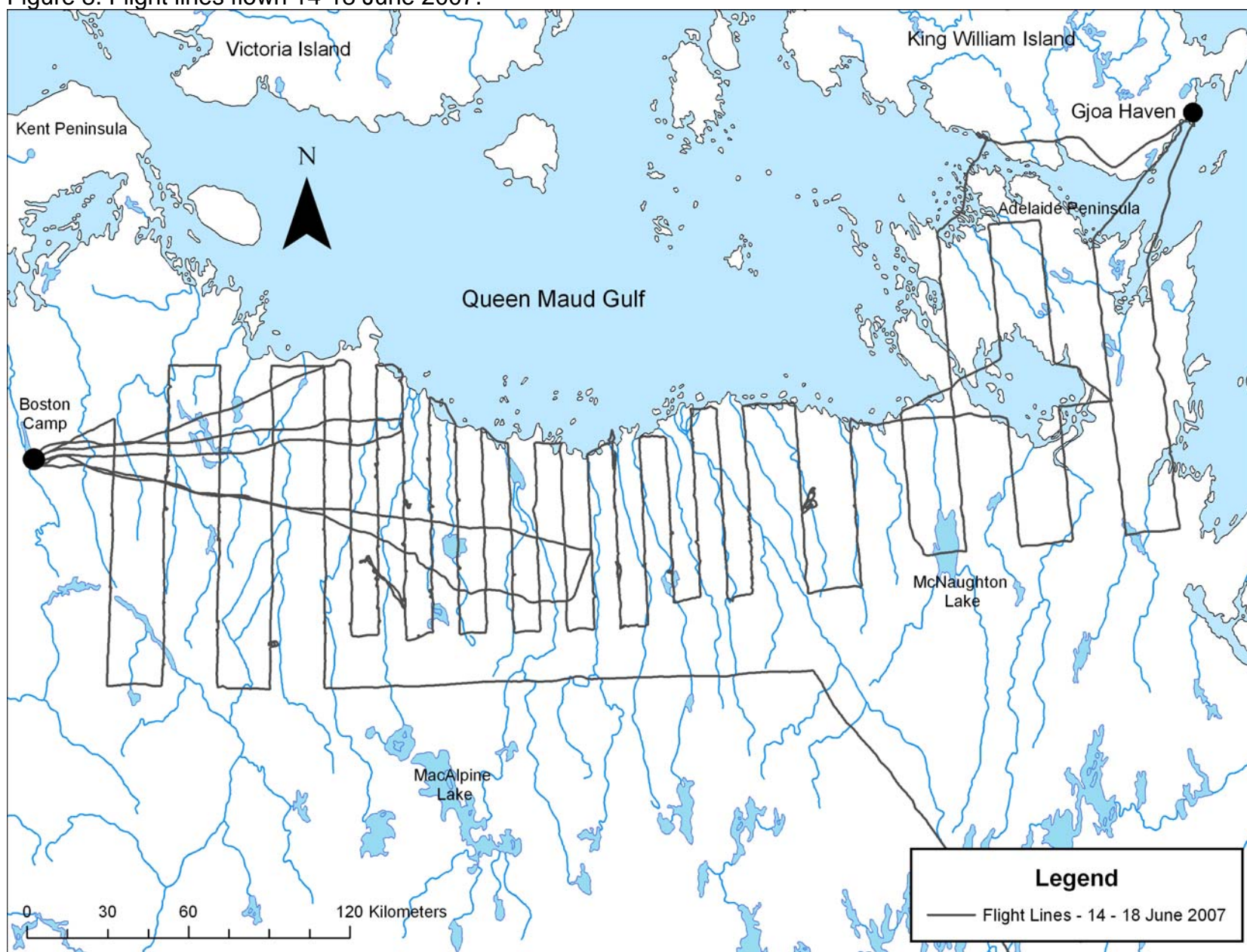




Figure 9. Flight lines and composition of caribou observed on transect summarized by 10-km transect segment, 14-18 June 2007.

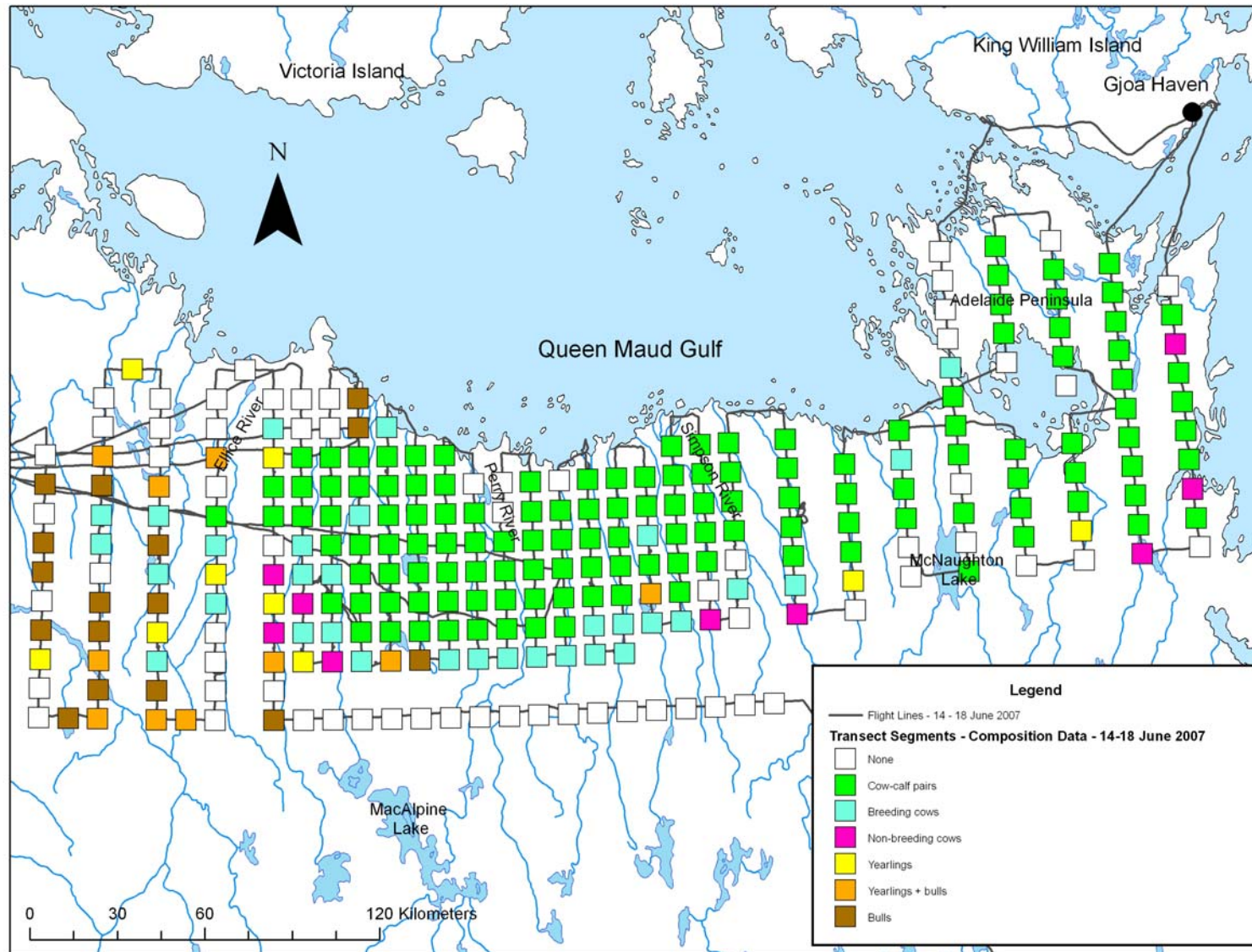


Figure 10. Flight lines and distribution of cows observed on transect summarized by 10-km transect segment, 14-18 June 2007.

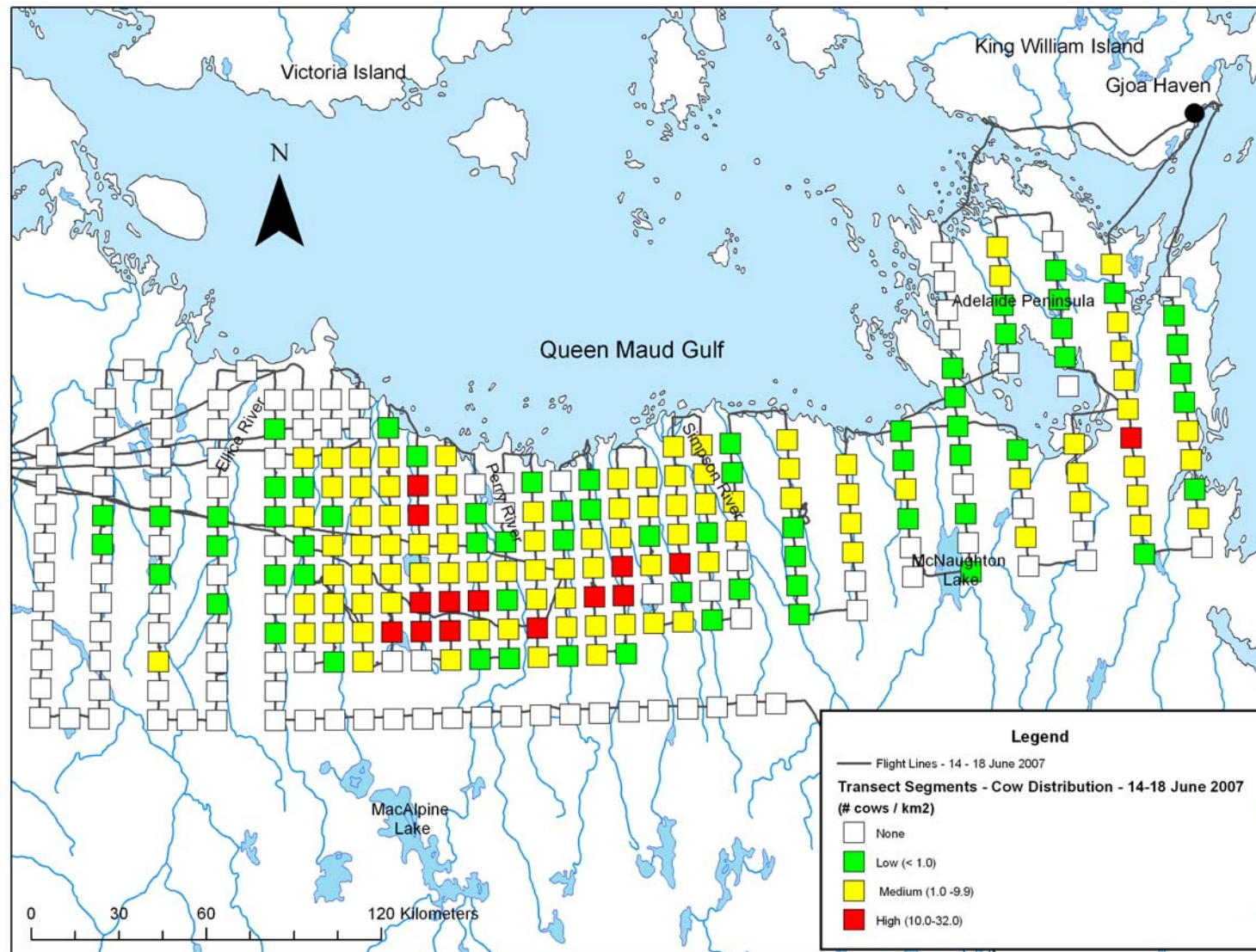




Figure 11. Flight lines and distribution of breeding cows observed on transect summarized by 10-km transect segment, 14-18 June 2007.

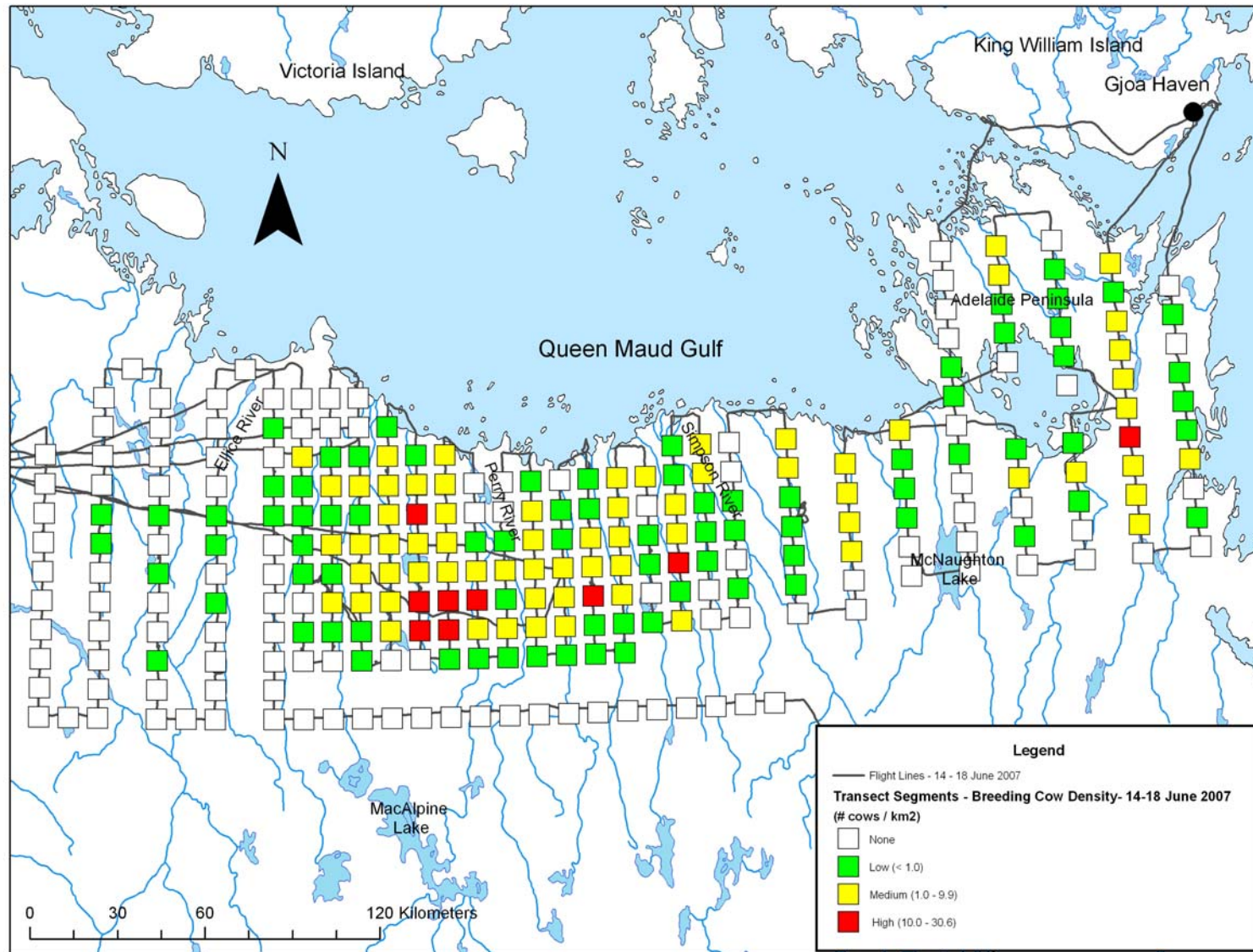


Figure 12. Flight lines and distribution of calves observed on transect summarized by 10-km transect segment, 14-18 June 2007.

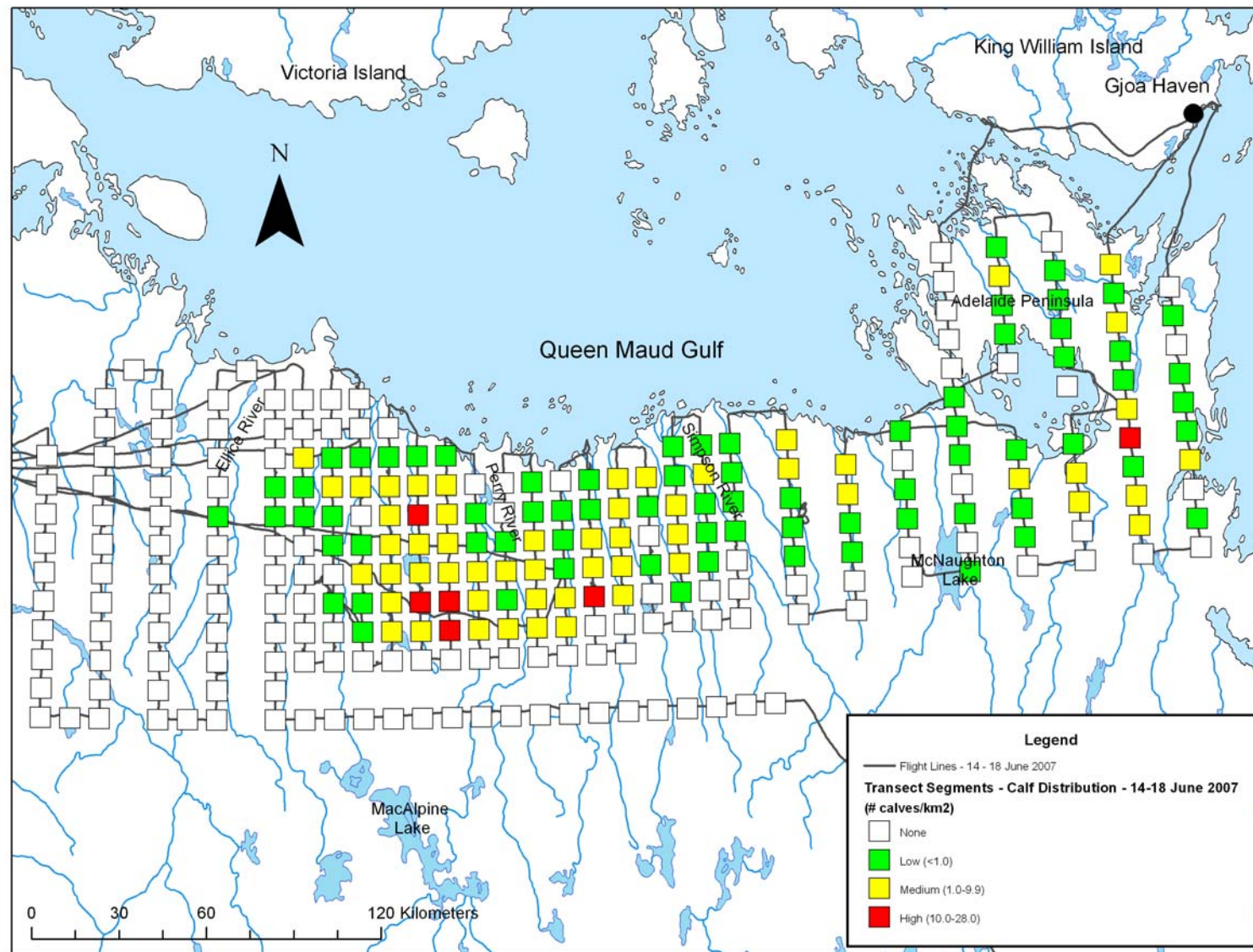




Figure 13. Flight lines flown 13-17 June 2008.

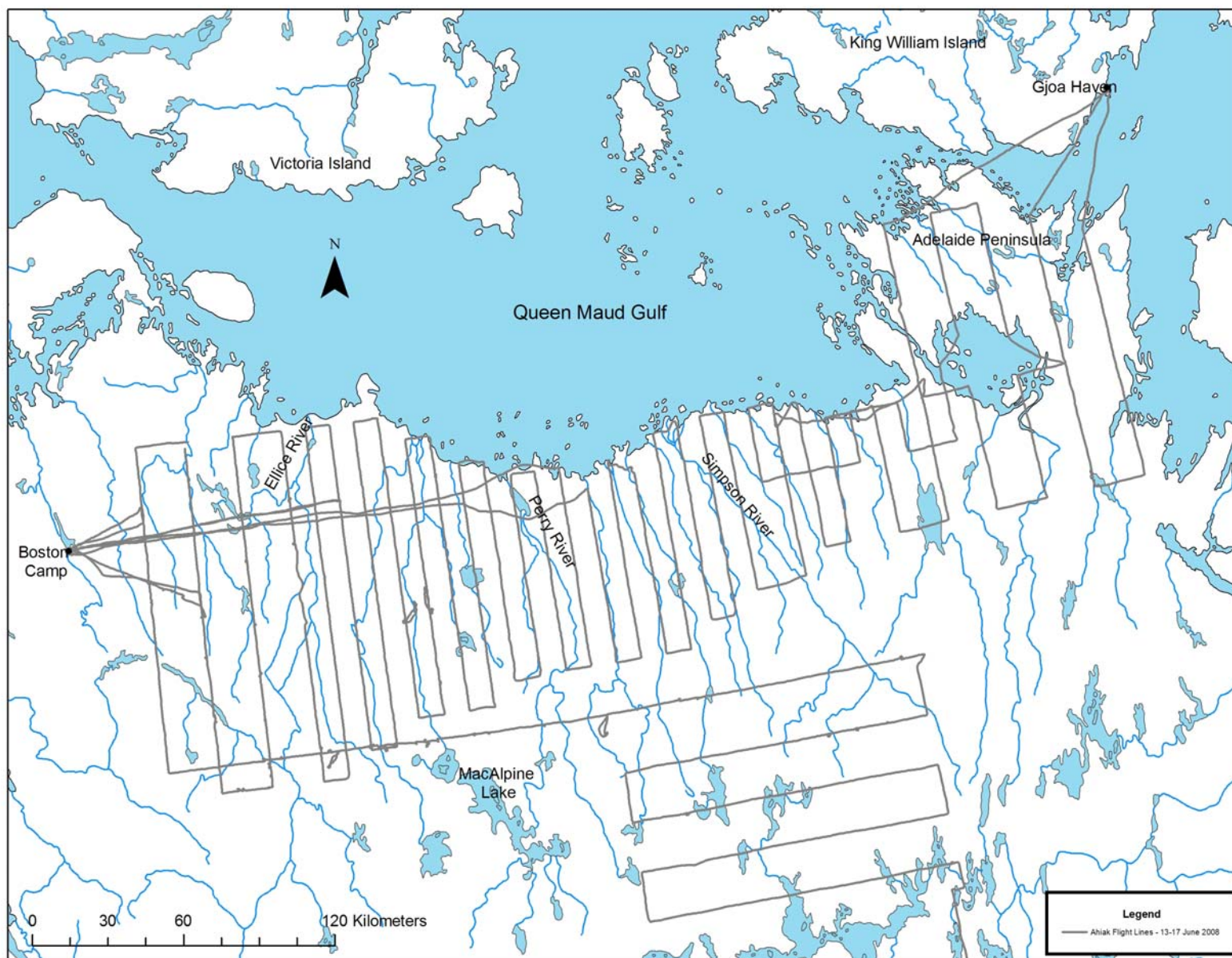


Figure 14. Flight lines and composition of caribou observed on transect summarized by 10-km transect segment, 13-17 June 2008.

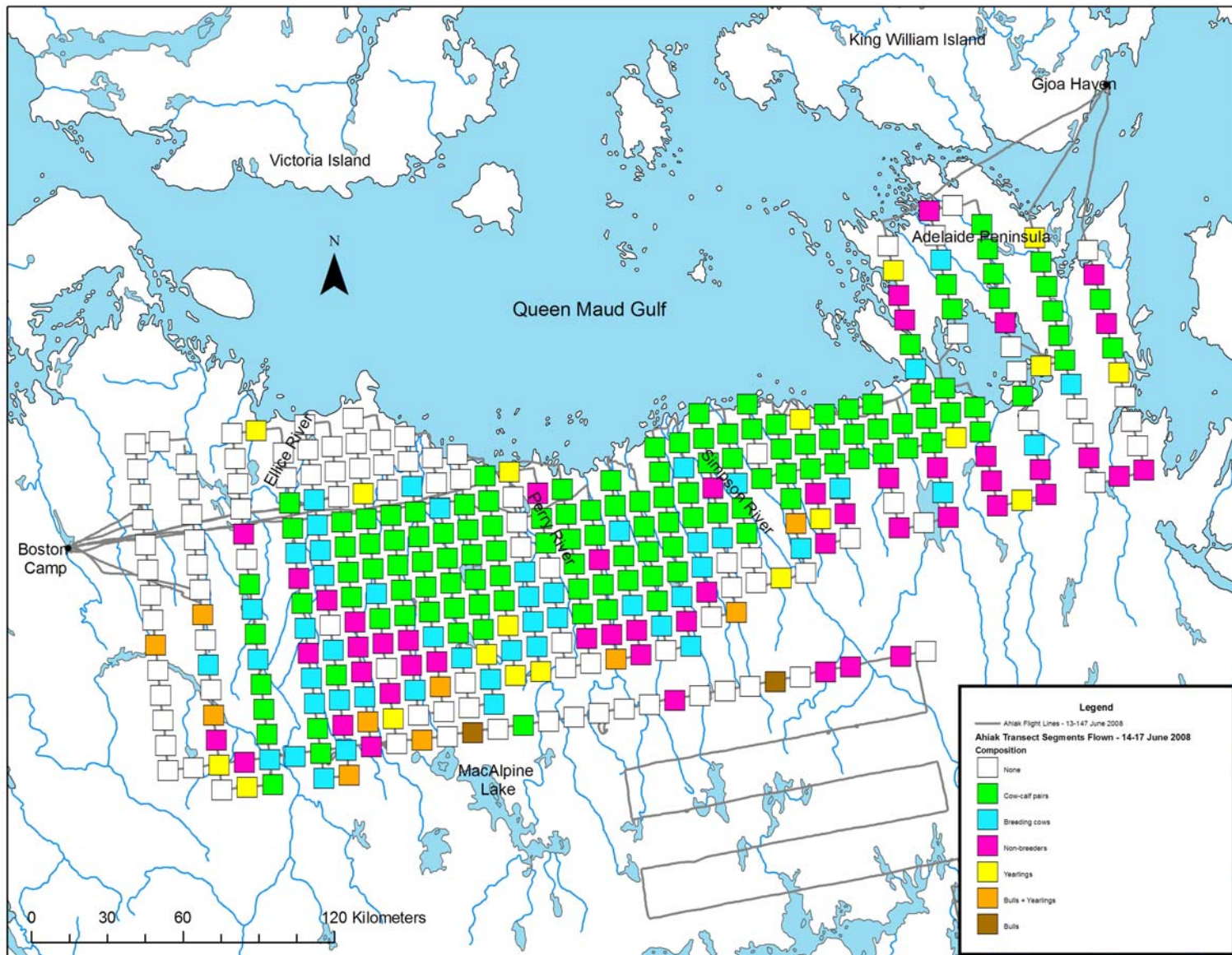




Figure 15. Flight lines and distribution of cows observed on transect summarized by 10-km transect segment, 13-17 June 2008.

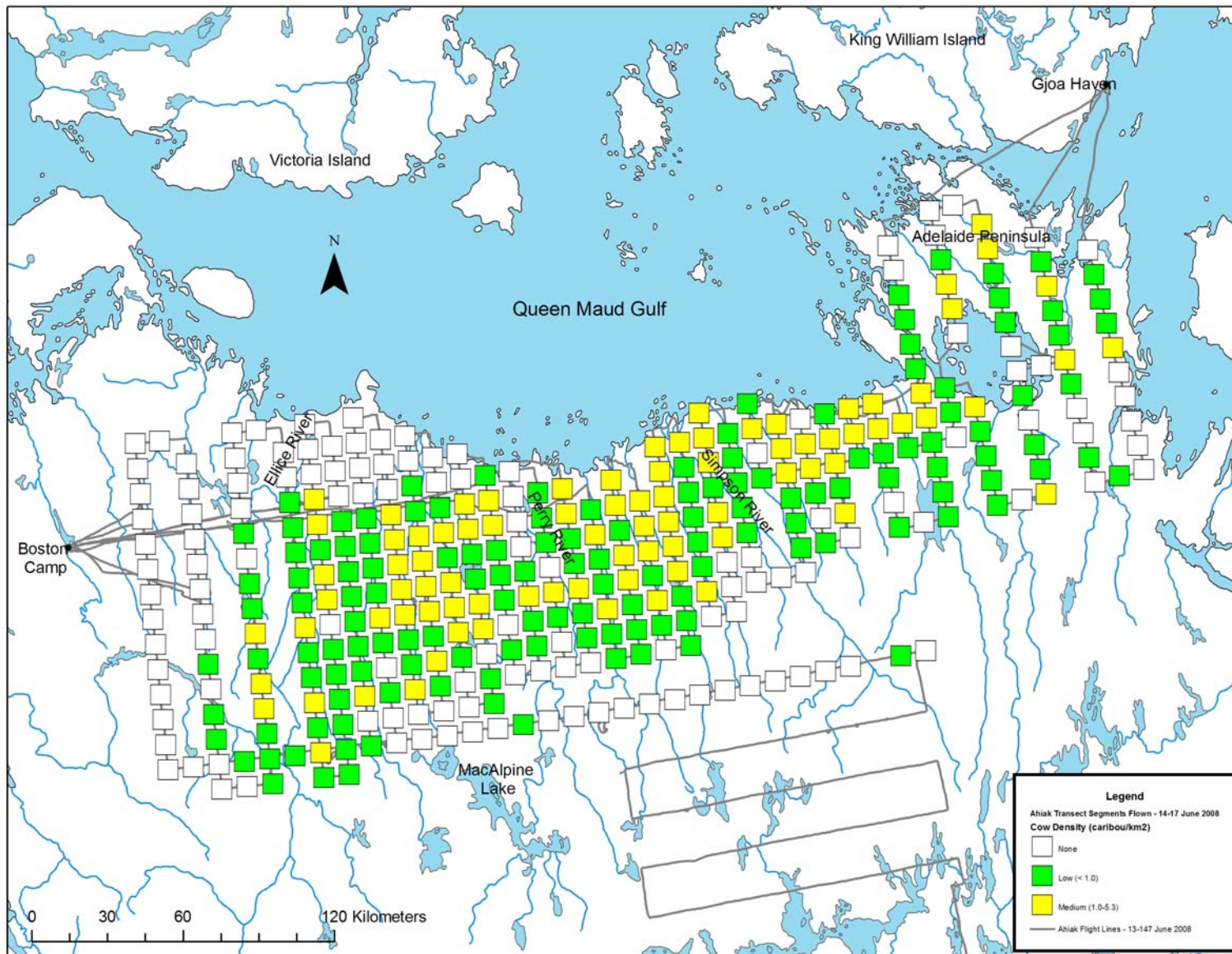


Figure 16. Flight lines and distribution of breeding cows observed on transect summarized by 10-km transect segment, 13-17 June 2008.

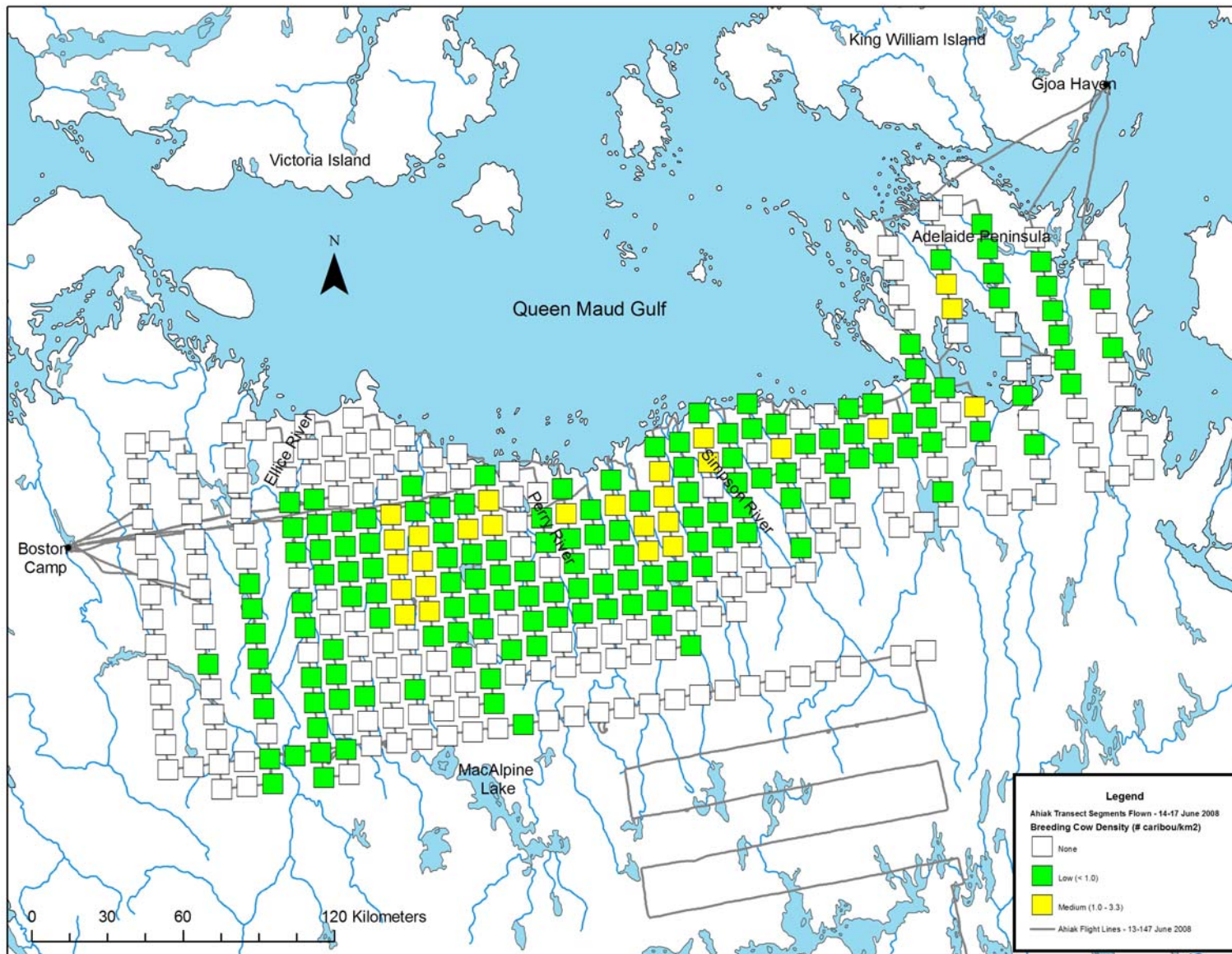




Figure 17. Flight lines and distribution of calves observed on transect summarized by 10-km transect segment, 13-17 June 2008.

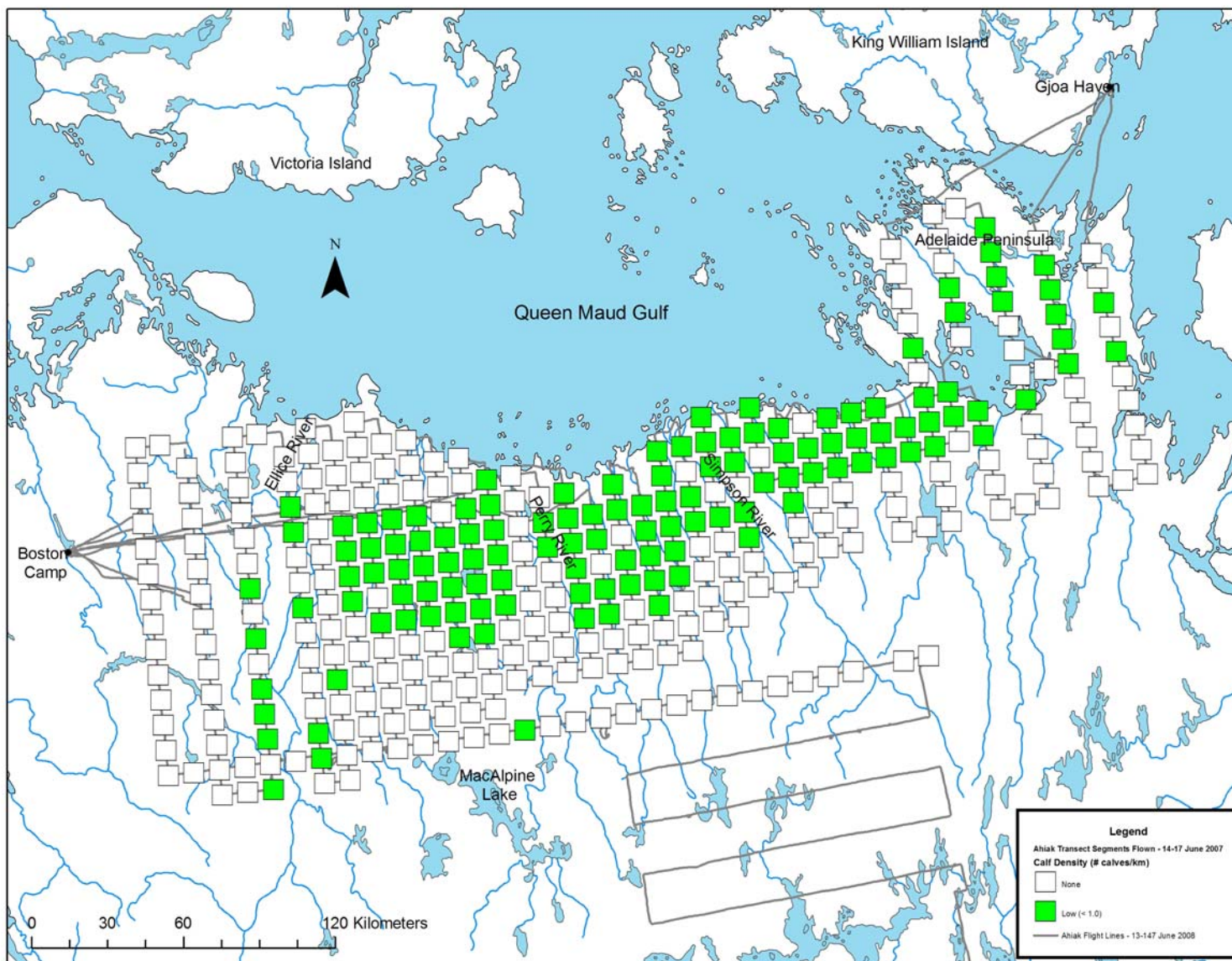


Figure 18. Flight lines and other wildlife observed on and off transect, 14-18 June 2007.

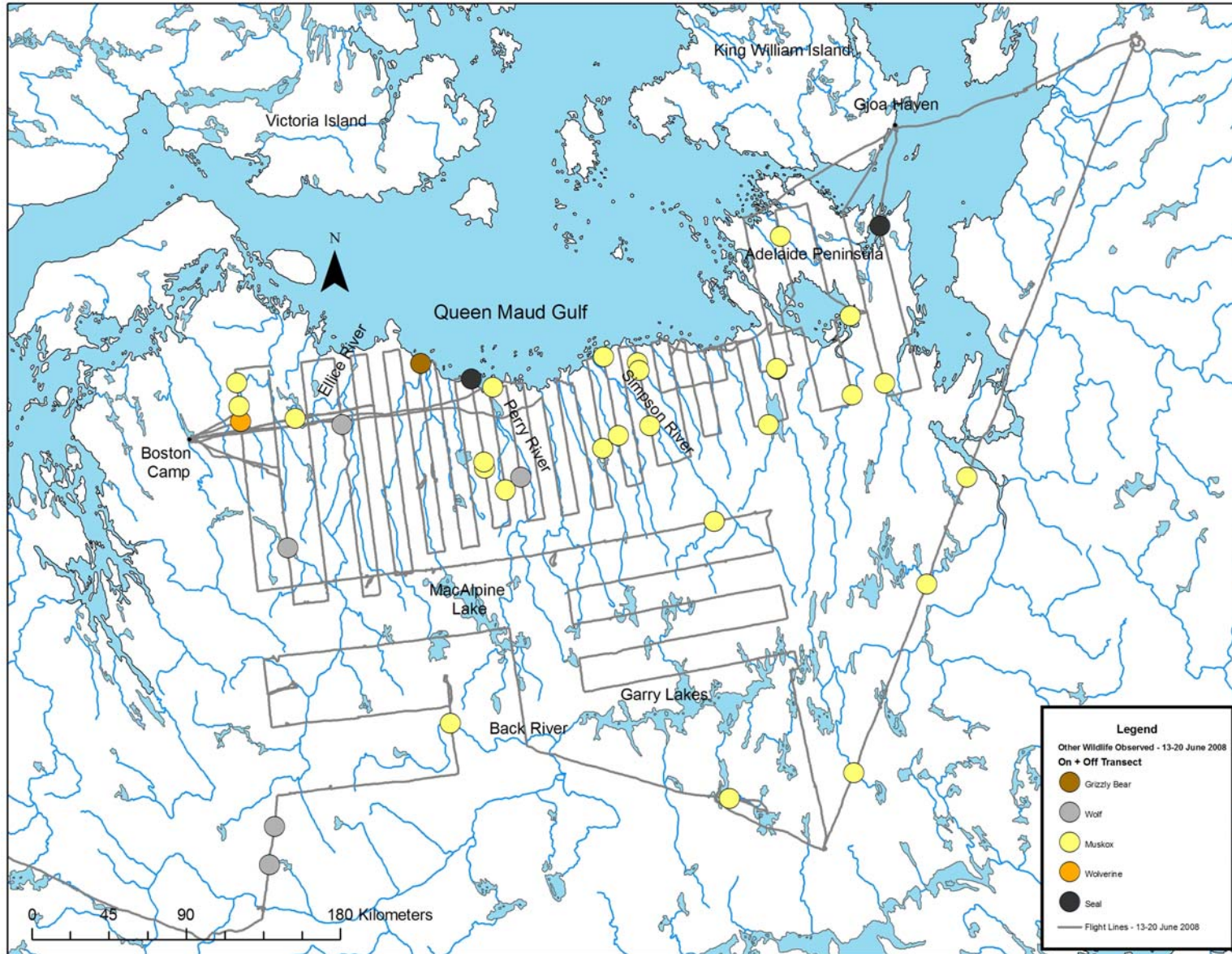




Figure 19. Ordinary kriging prediction map of the distribution of breeding cows observed on transect on the calving grounds of the Ahlak barren-ground caribou herd, 13-16 June 2006.

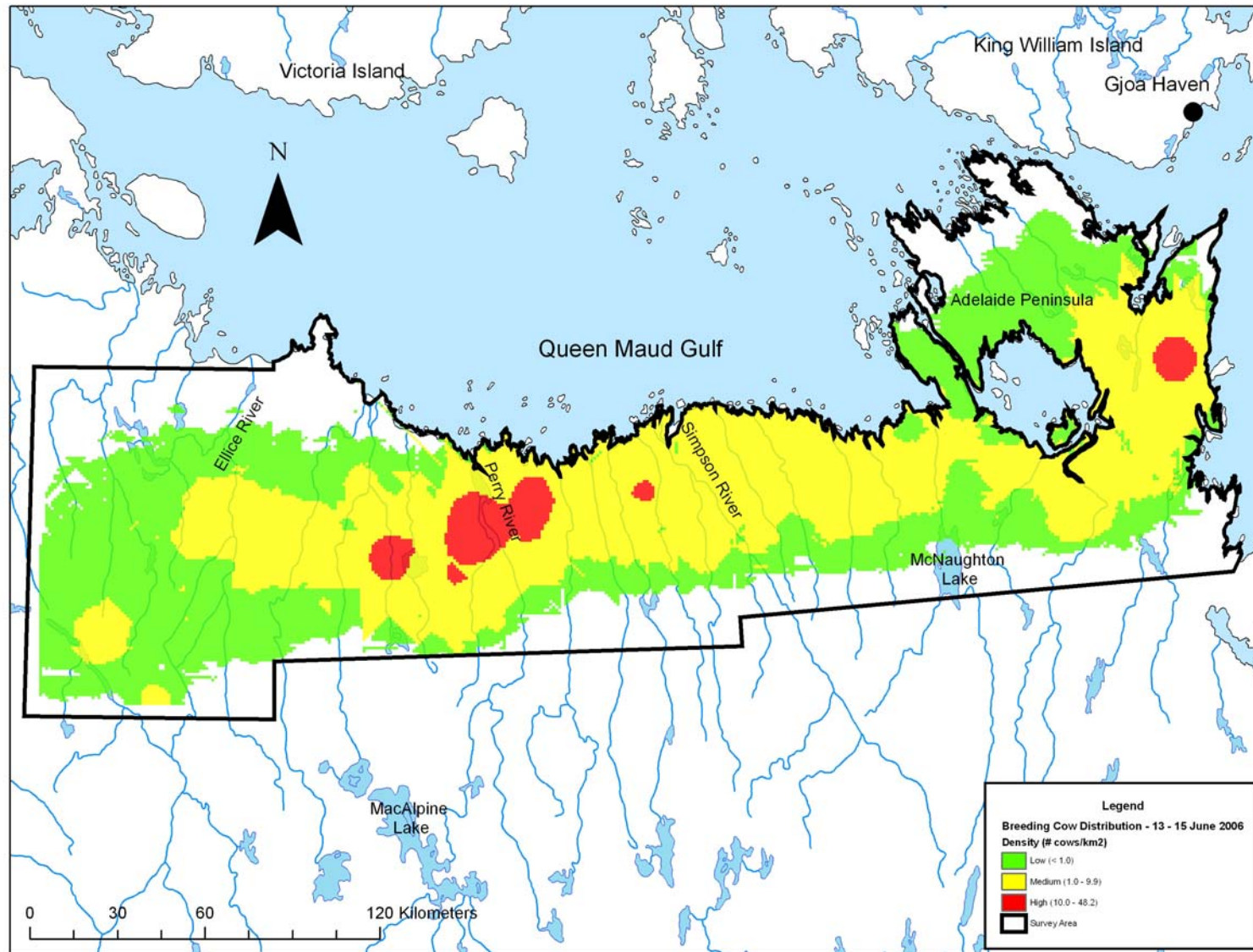


Figure 20. Ordinary kriging prediction map of the distribution of breeding cows observed on transect on the calving grounds of the Ahiak barren-ground caribou herd, 14-18 June 2007.

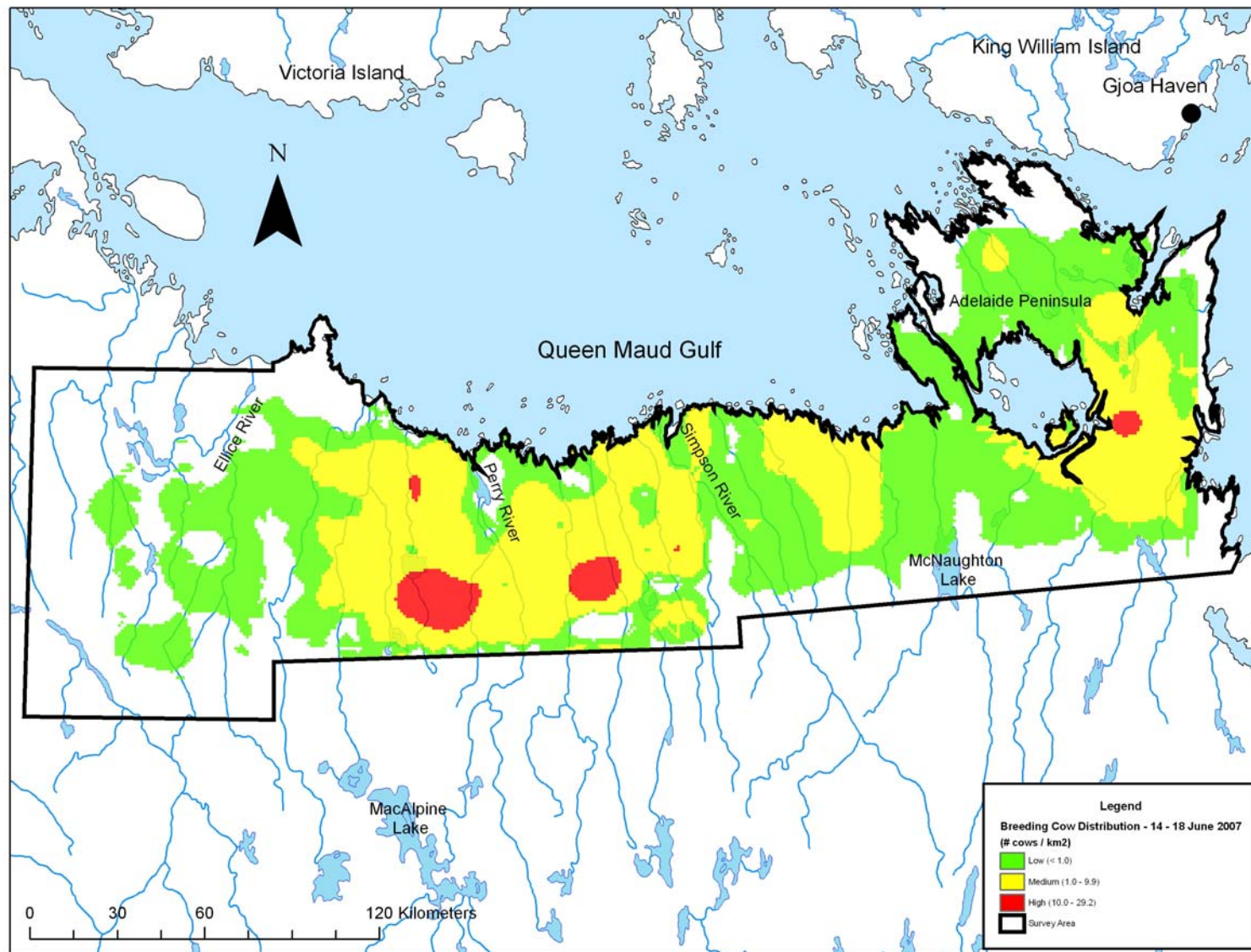




Figure 21. Ordinary kriging prediction map of the distribution of breeding cows observed on transect on the calving grounds of the Ahiak barren-ground caribou herd, 13-17 June 2008.

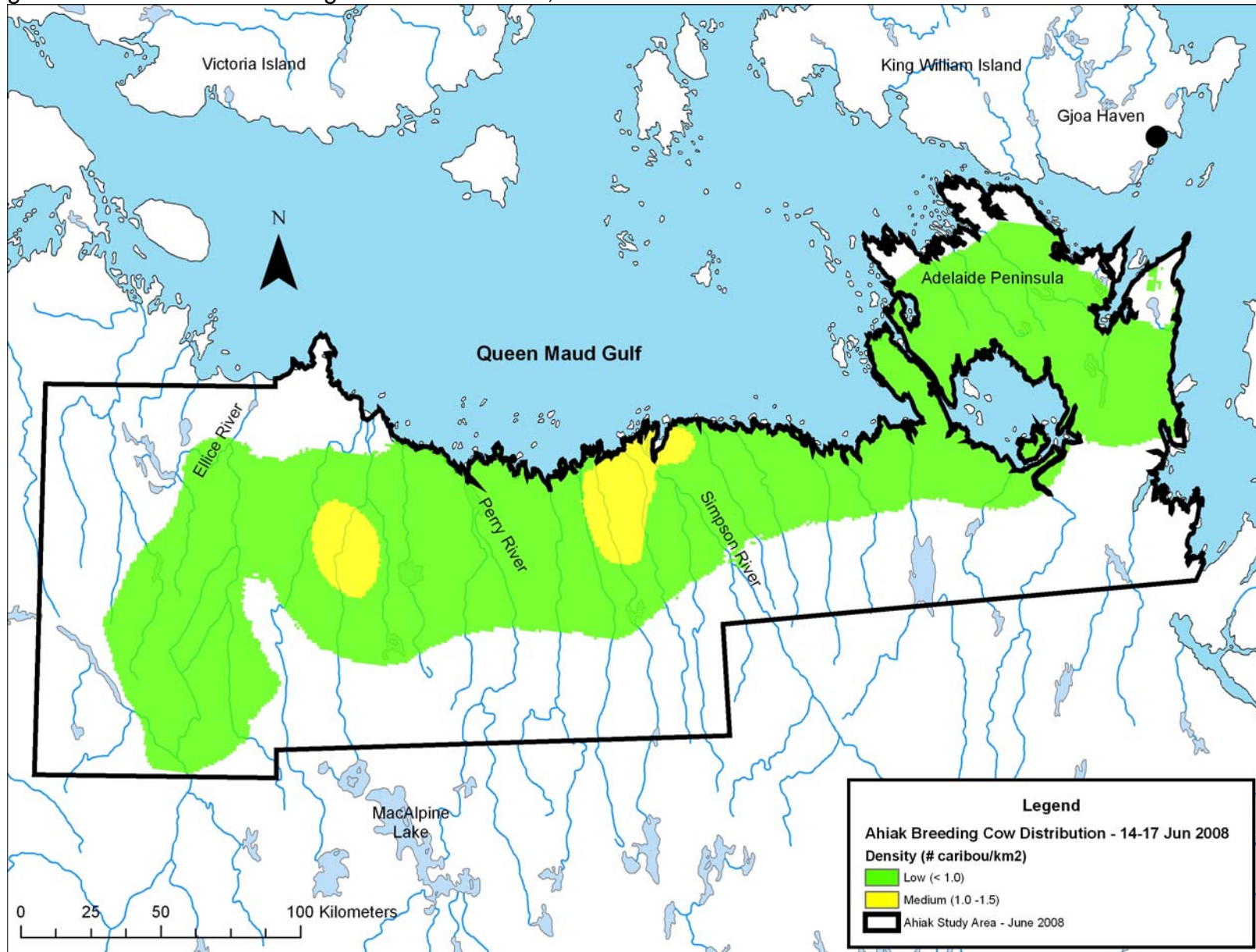


Figure 22. Ordinary kriging prediction map of the distribution of cows observed on transect on the calving grounds of the Ahiak barren-ground caribou herd, 13-17 June 2008.

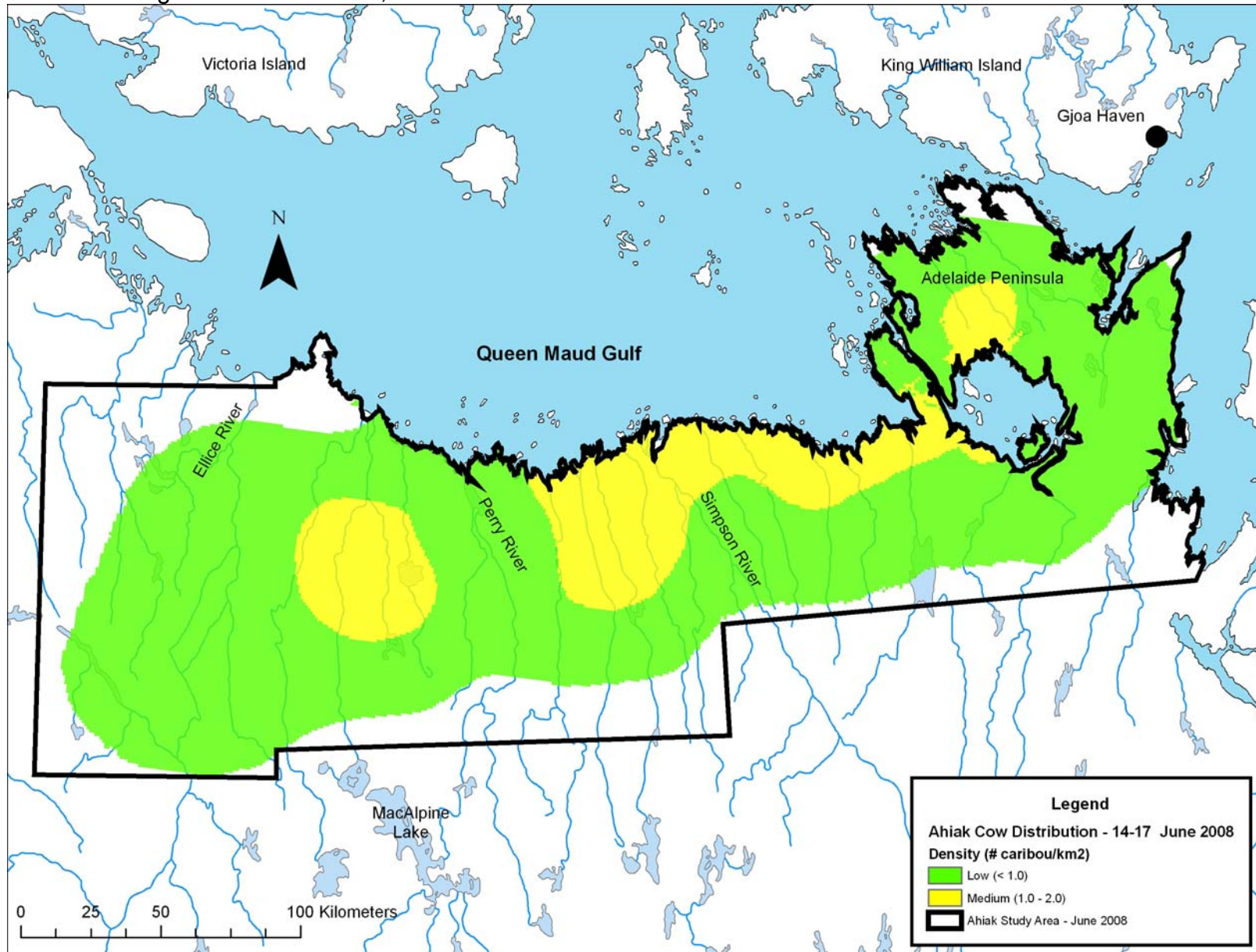




Figure 23. Breeding cow density values at centroids used to generate an ordinary kriging prediction map of the distribution of cows observed on transect on the calving grounds of the Ahiak barren-ground caribou herd, 13-16 June 2006.

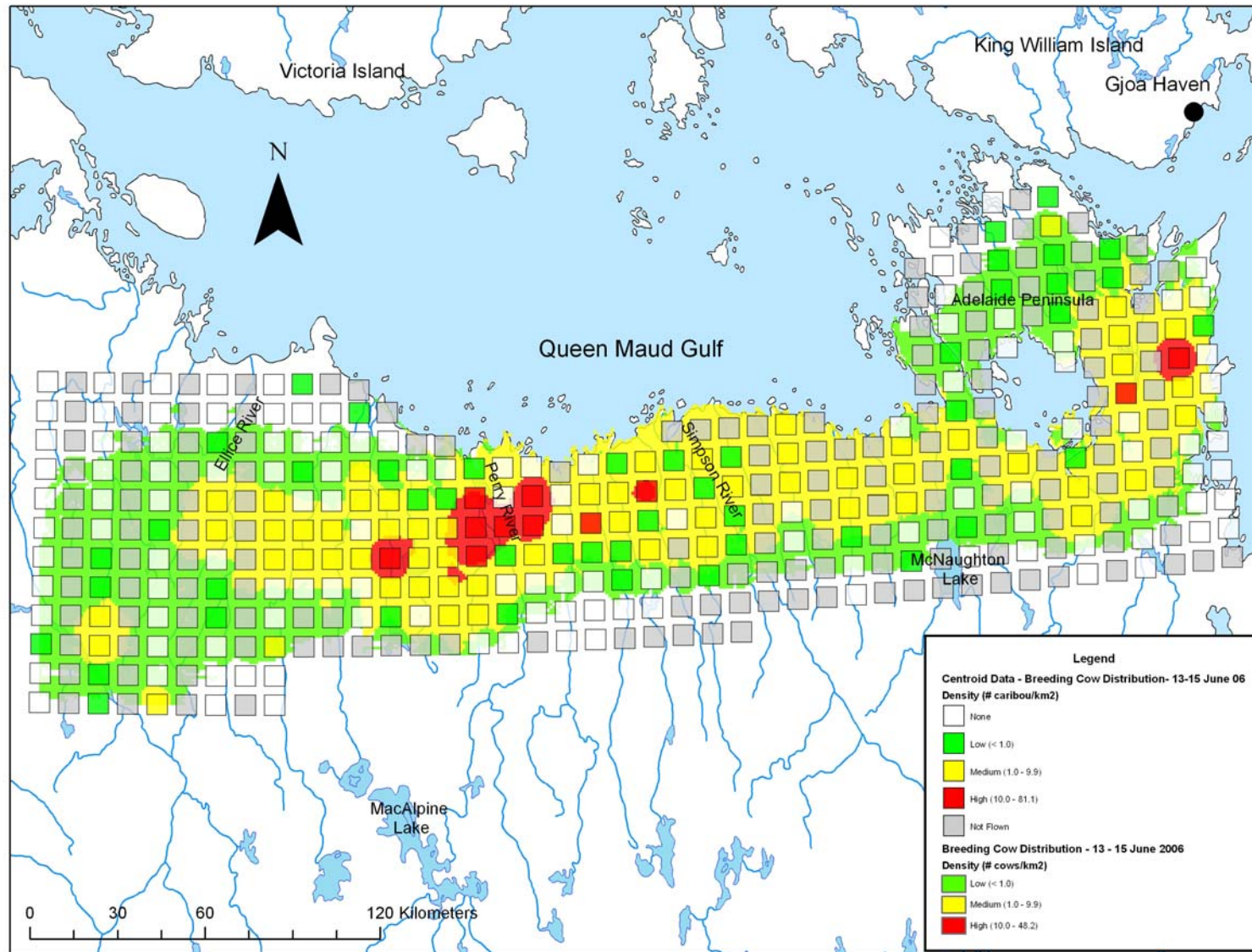


Figure 24. Breeding cow density values at centroids used to generate an ordinary kriging prediction map of the distribution of cows observed on transect on the calving grounds of the Ahiak barren-ground caribou herd, 14-18 June 2007.

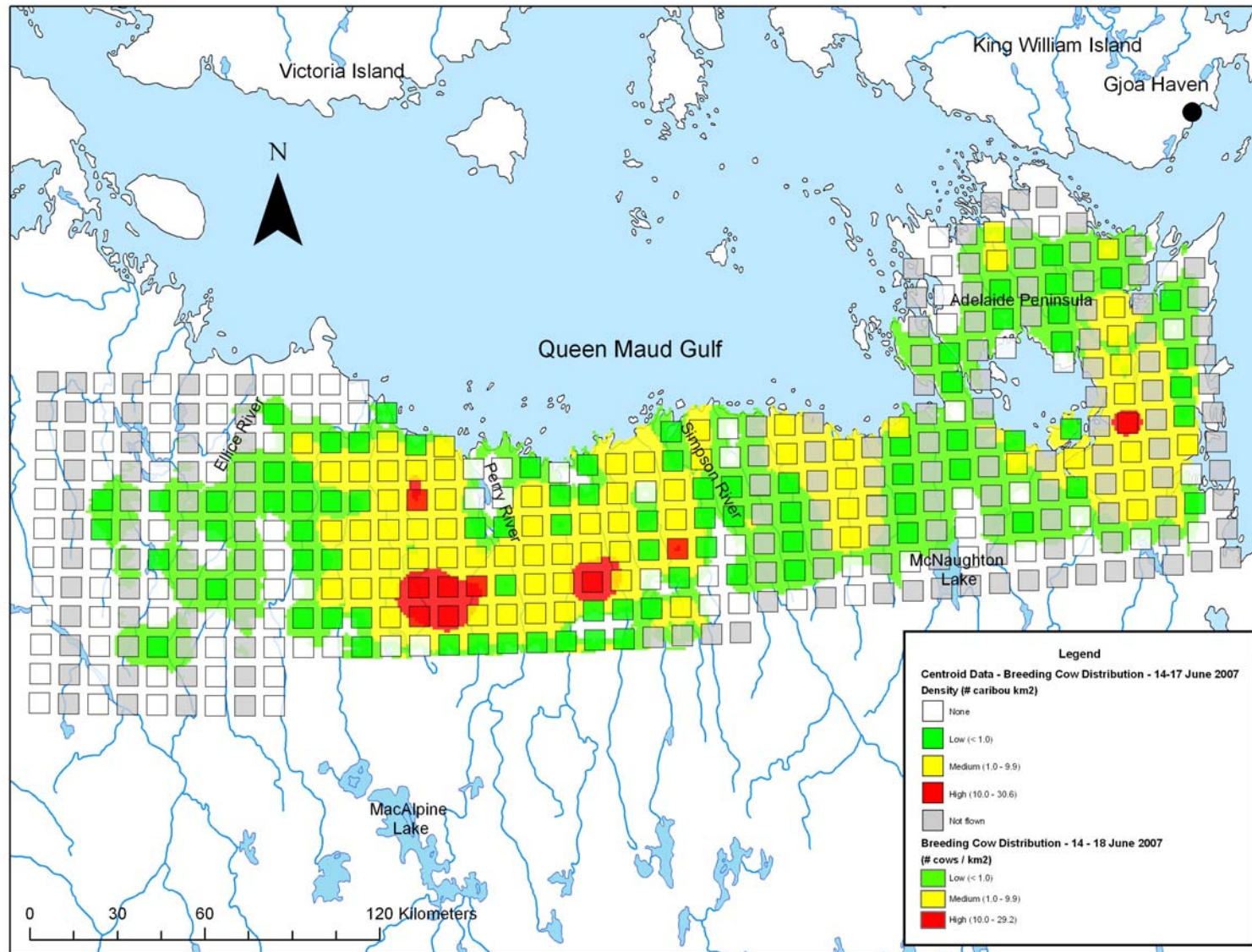




Figure 25. Breeding cow density values at centroids used to generate an ordinary kriging prediction map of the distribution of cows observed on transect on the calving grounds of the Ahiak barren-ground caribou herd, 13-17 June 2008.

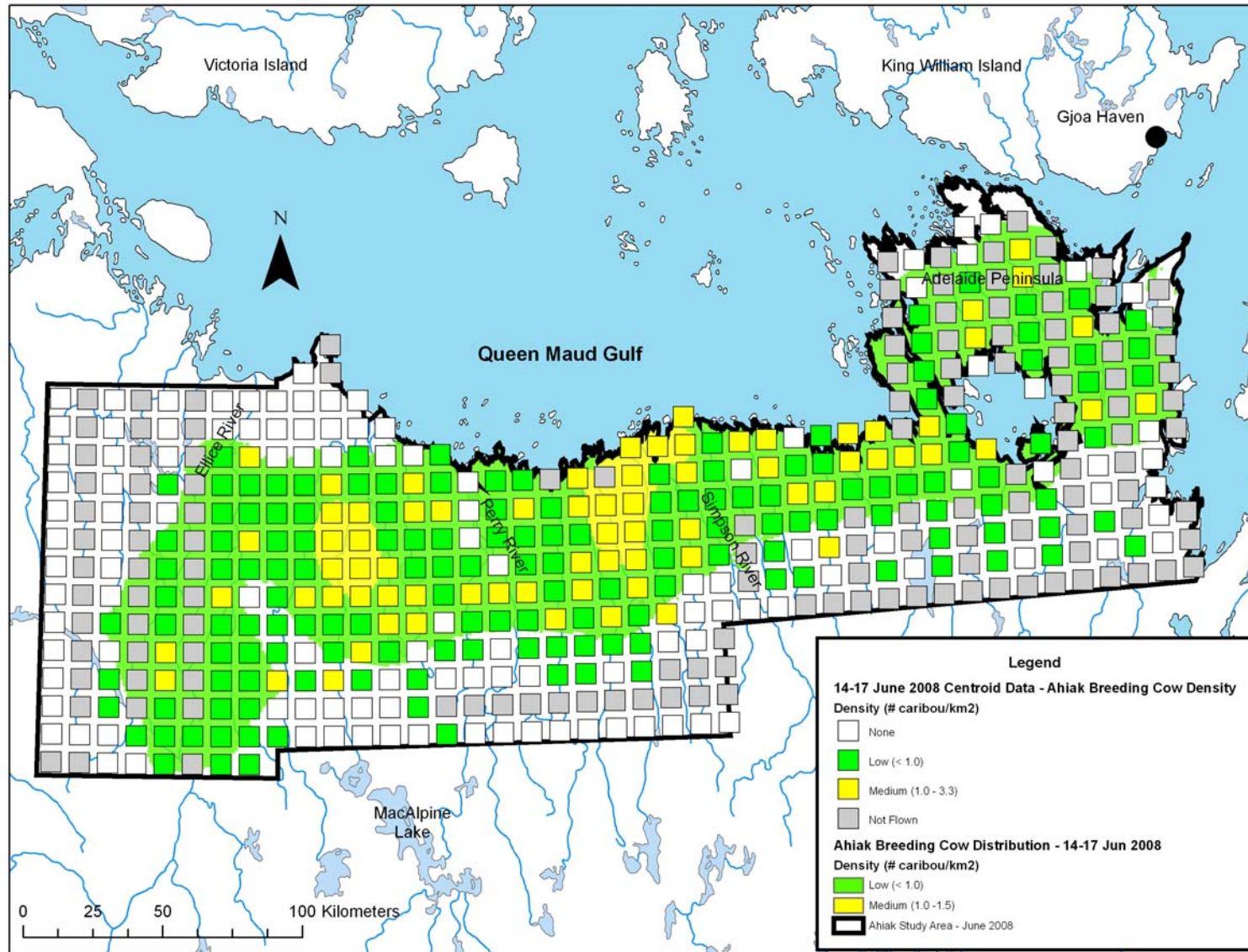


Figure 26. Cow density values at centroids used to generate an ordinary kriging prediction map of the distribution of cows observed on transect on the calving grounds of the Ahiak barren-ground caribou herd, 13-17 June 2008.

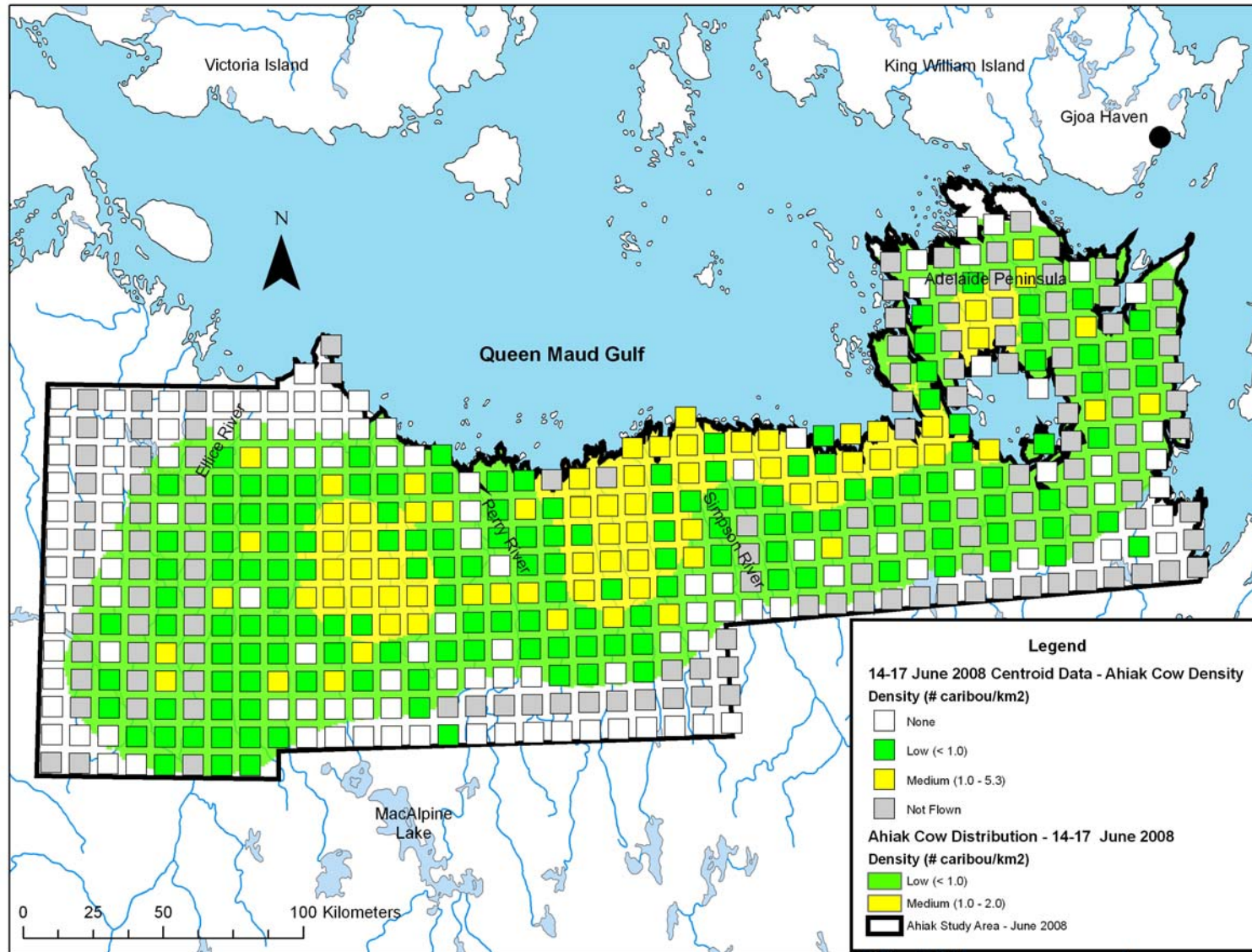




Figure 27. Ordinary kriging prediction map of the distribution of calves observed on transect on the calving grounds of the Ahiak barren-ground caribou herd, 13-16 June 2006.

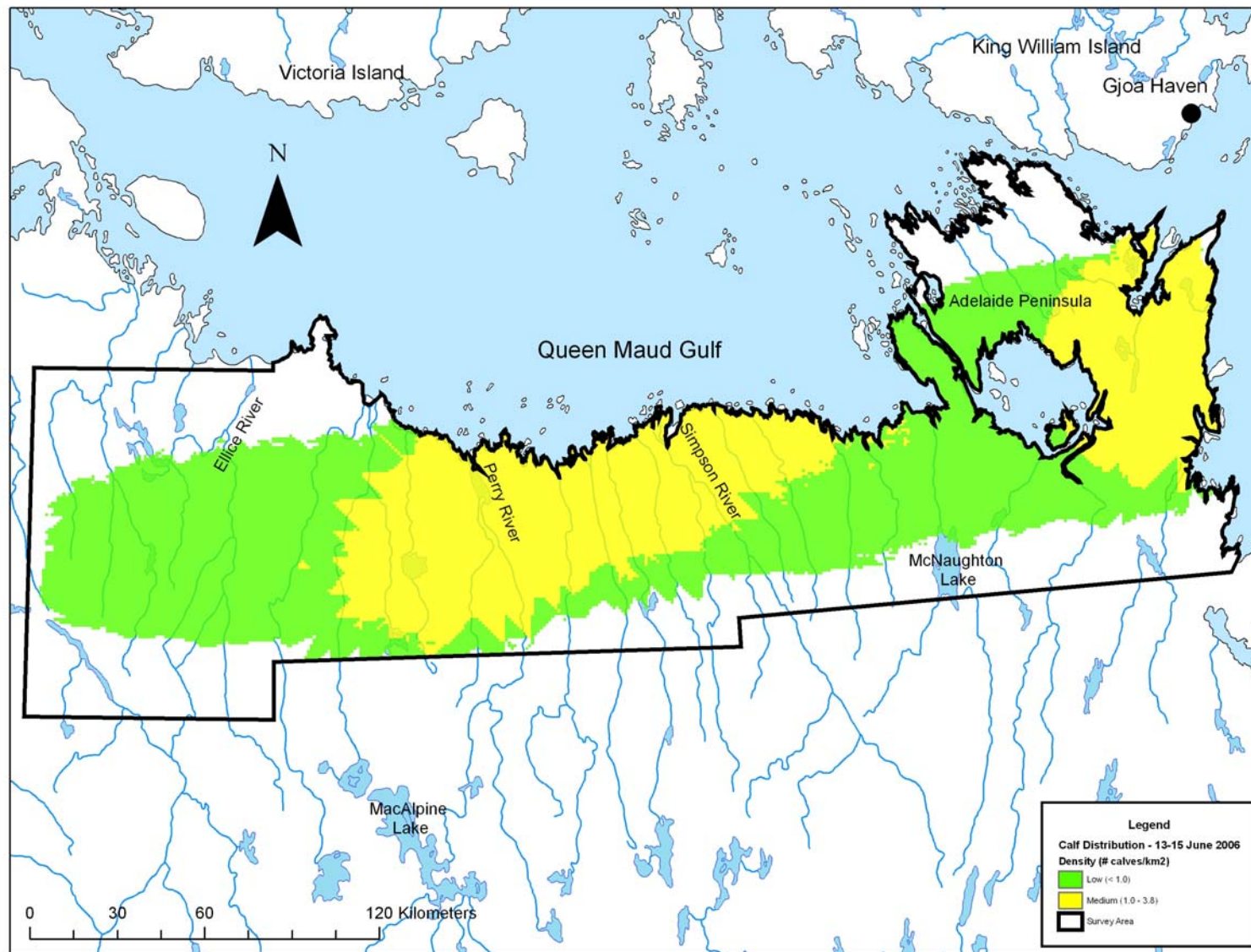


Figure 28. Ordinary kriging prediction map of the distribution of calves observed on transect on the calving grounds of the Ahlak barren-ground caribou herd, 14-18 June 2007.

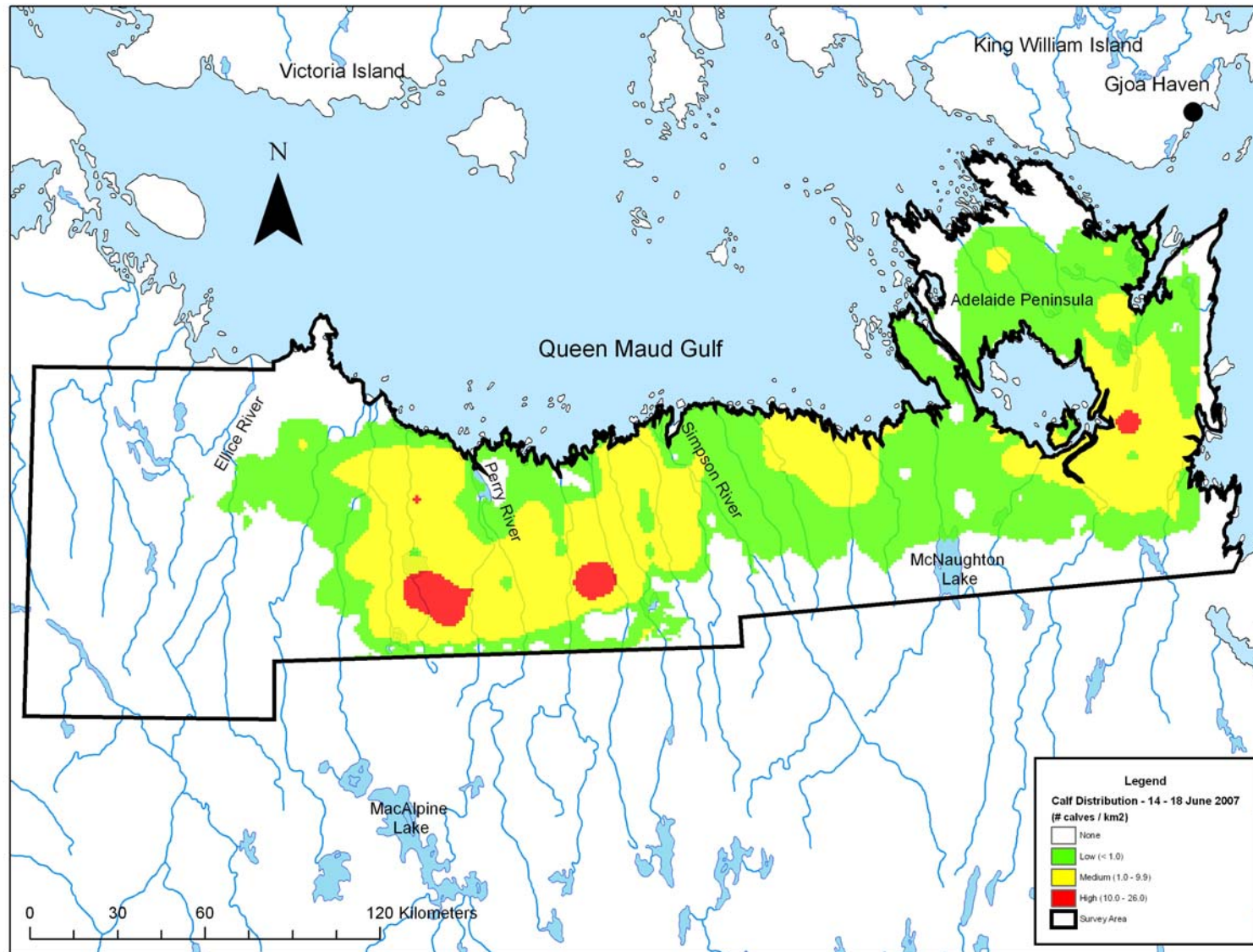




Figure 29. Ordinary kriging prediction map of the distribution of calves observed on transect on the calving grounds of the Ahiak barren-ground caribou herd, 13-17 June 2008.

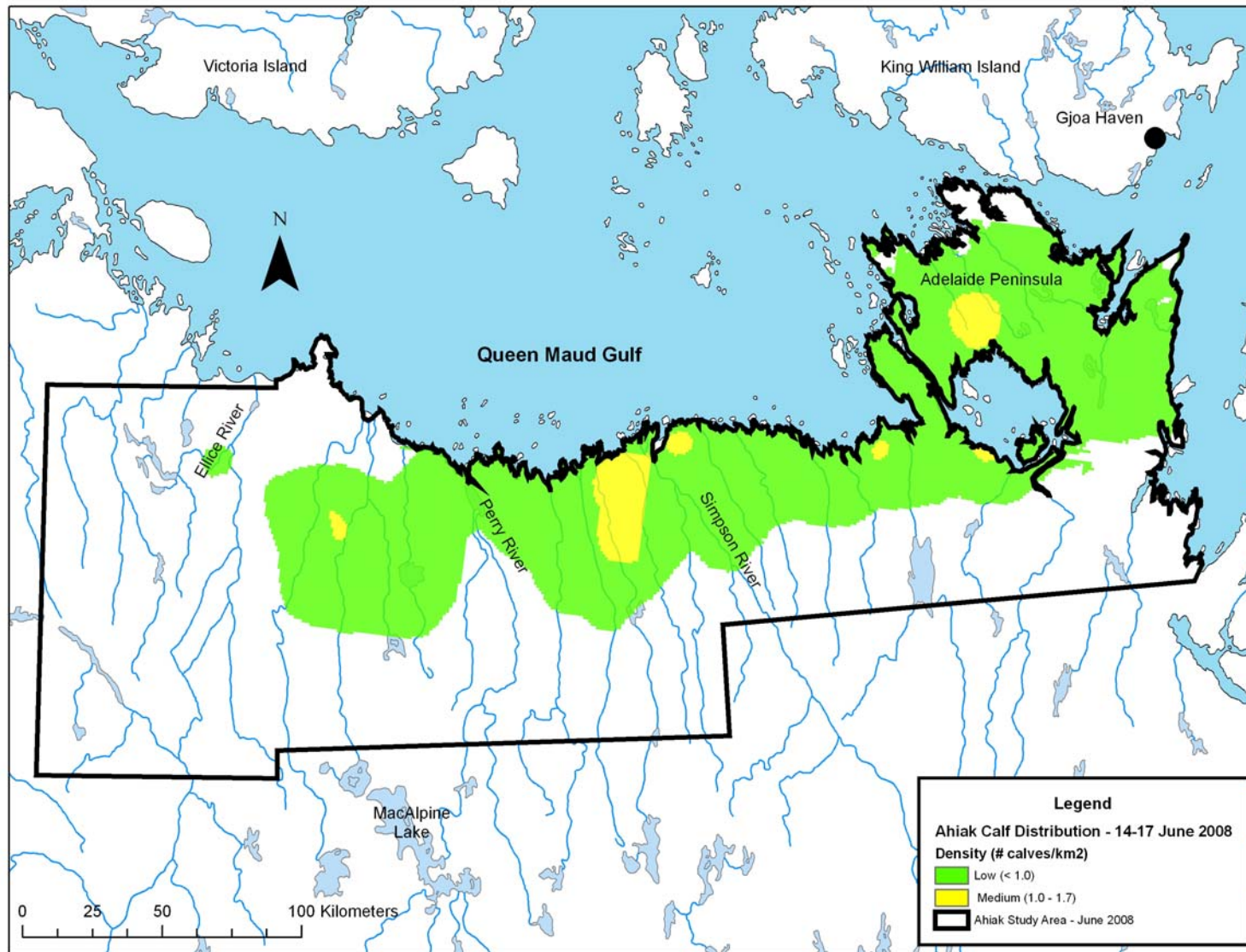


Figure 30. Calf density values at centroids used to generate an ordinary kriging prediction map of the distribution of cows observed on transect on the calving grounds of the Ahlak barren-ground caribou herd, 13-16 June 2006.

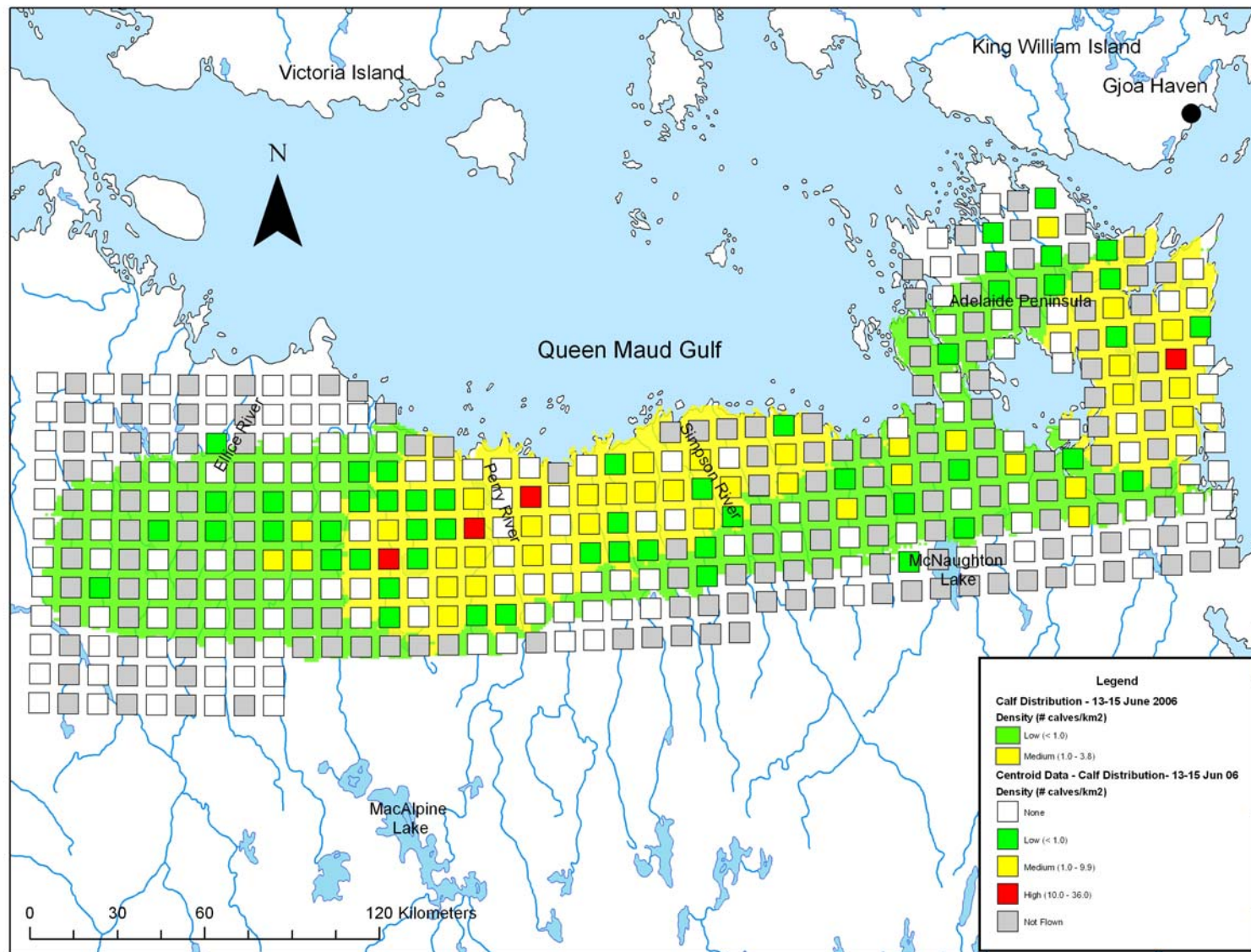




Figure 31. Calf density values at centroids used to generate an ordinary kriging prediction map of the distribution of cows observed on transect on the calving grounds of the Ahlak barren-ground caribou herd, 14-18 June 2007.

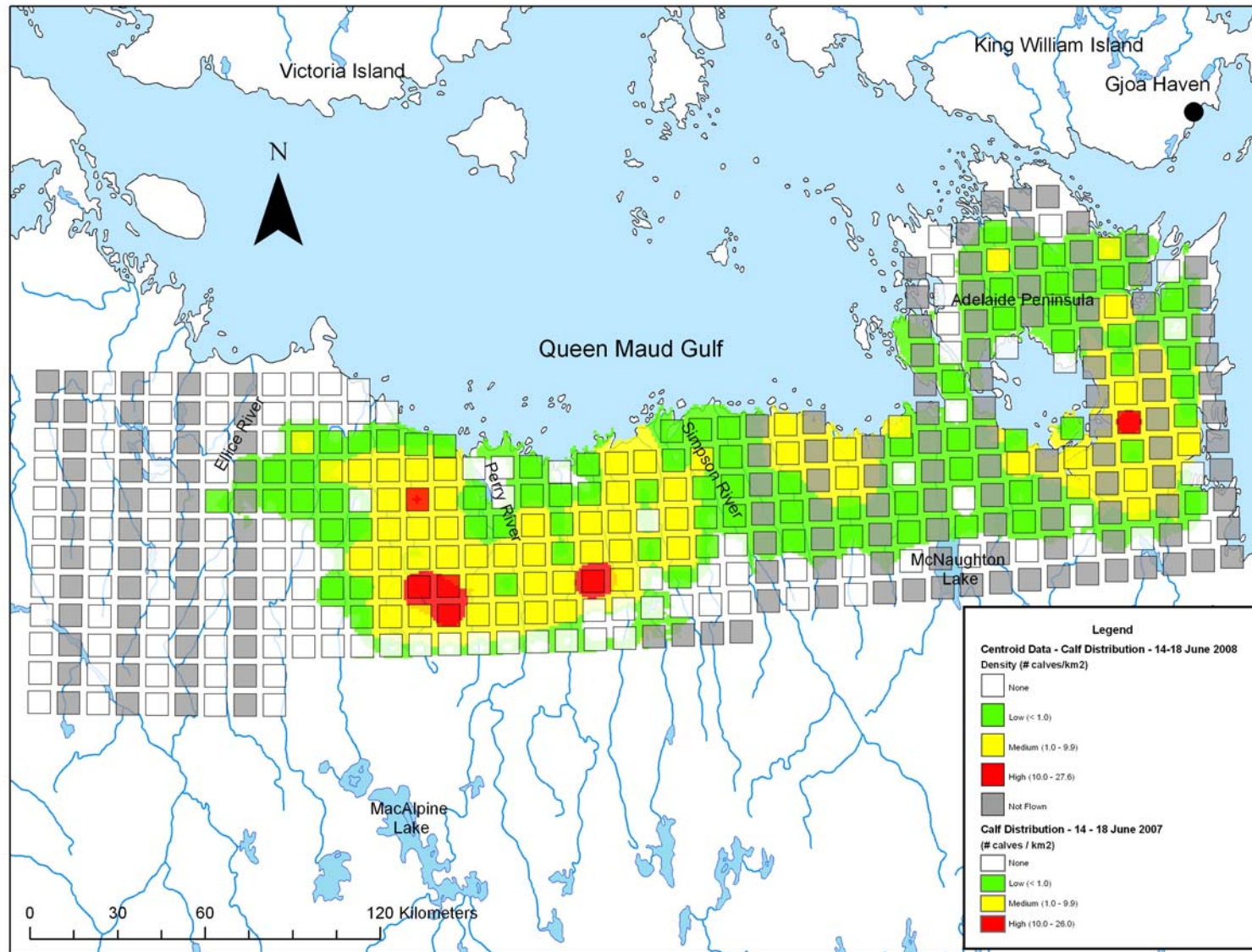


Figure 32. Calf density values at centroids used to generate an ordinary kriging prediction map of the distribution of cows observed on transect on the calving grounds of the Ahlak barren-ground caribou herd, 13-17 June 2008.

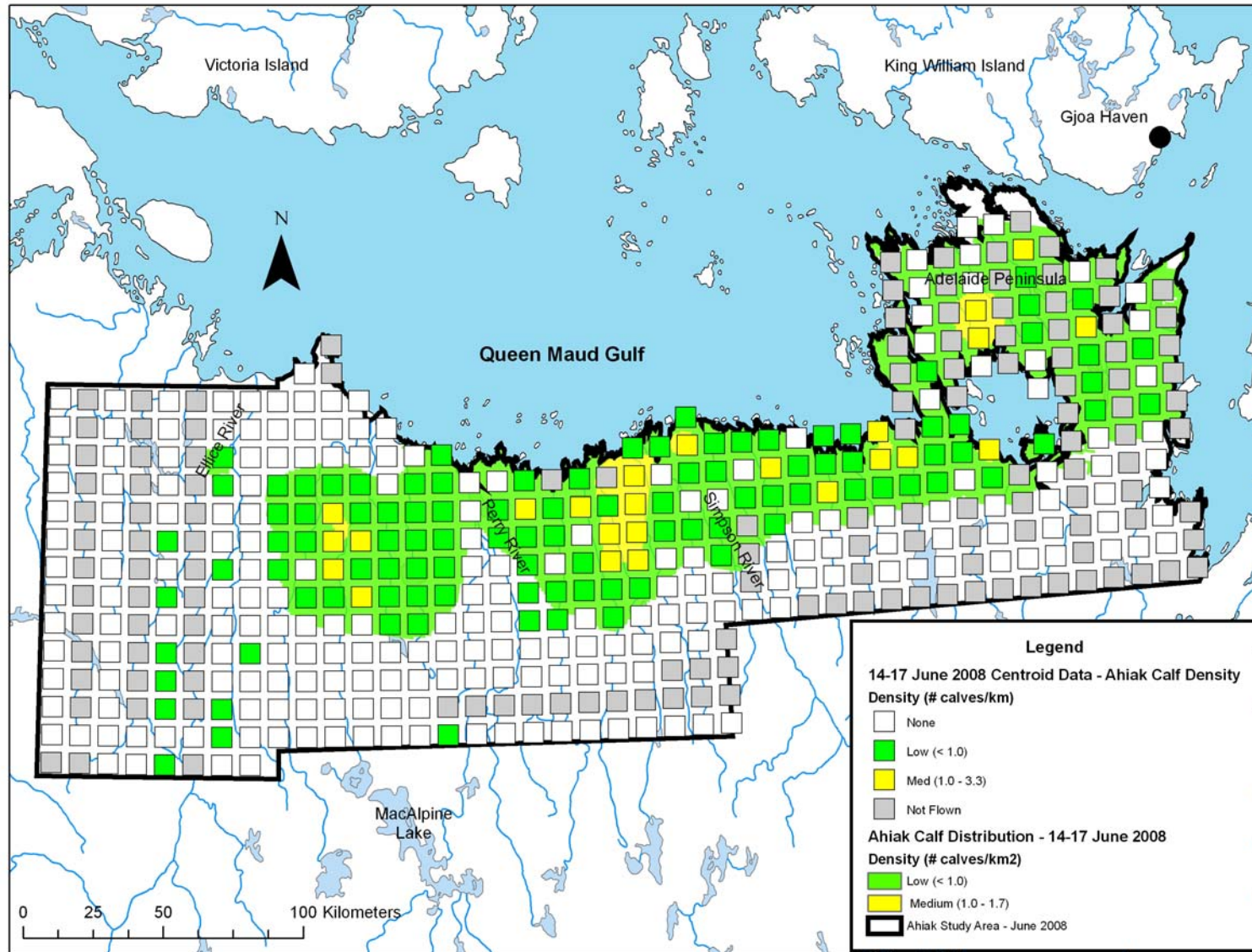




Figure 33. Extent of the annual calving ground at peak of calving, June 2006.

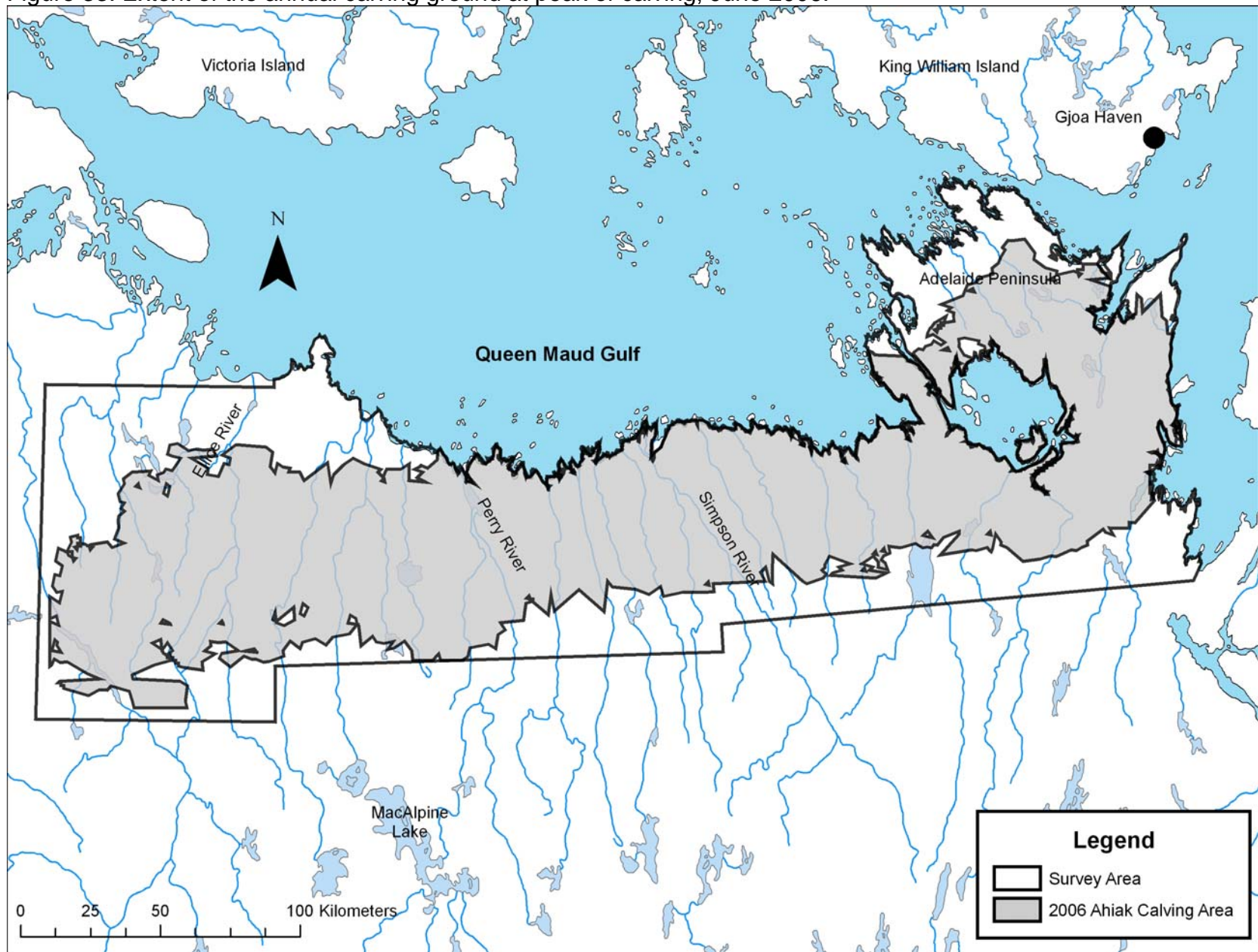


Figure 34. Extent of the annual calving ground at peak of calving, June 2007.





Figure 35. Extent of the annual calving ground at peak of calving, June 2008.



Figure 36. Distribution of GPS and satellite-collared cows relative to the distribution of breeding cows on the Ahlak calving ground, June 2006.

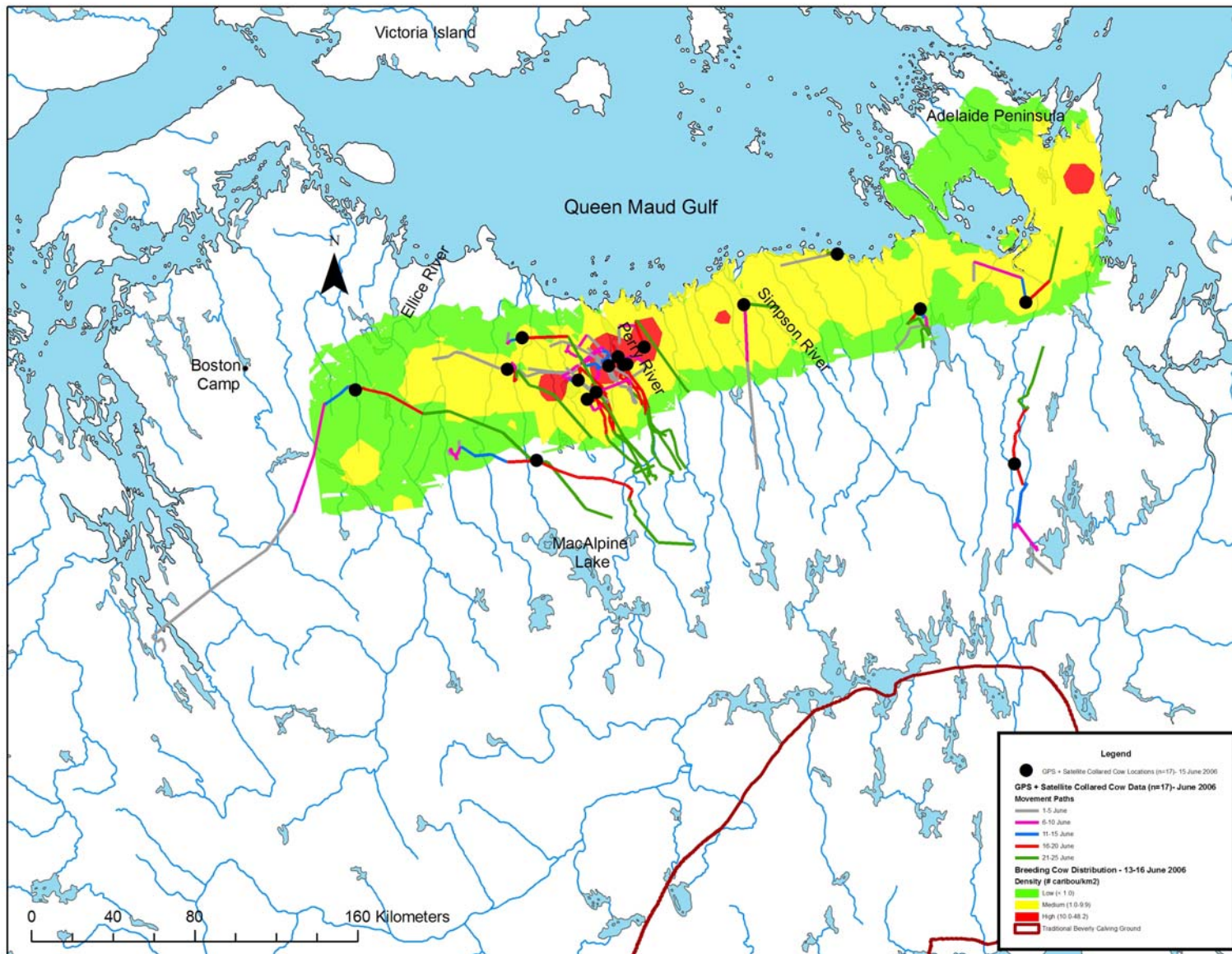




Figure 37. Distribution of GPS and satellite-collared cows relative to the distribution of breeding cows on the Ahiaik calving ground, June 2007.

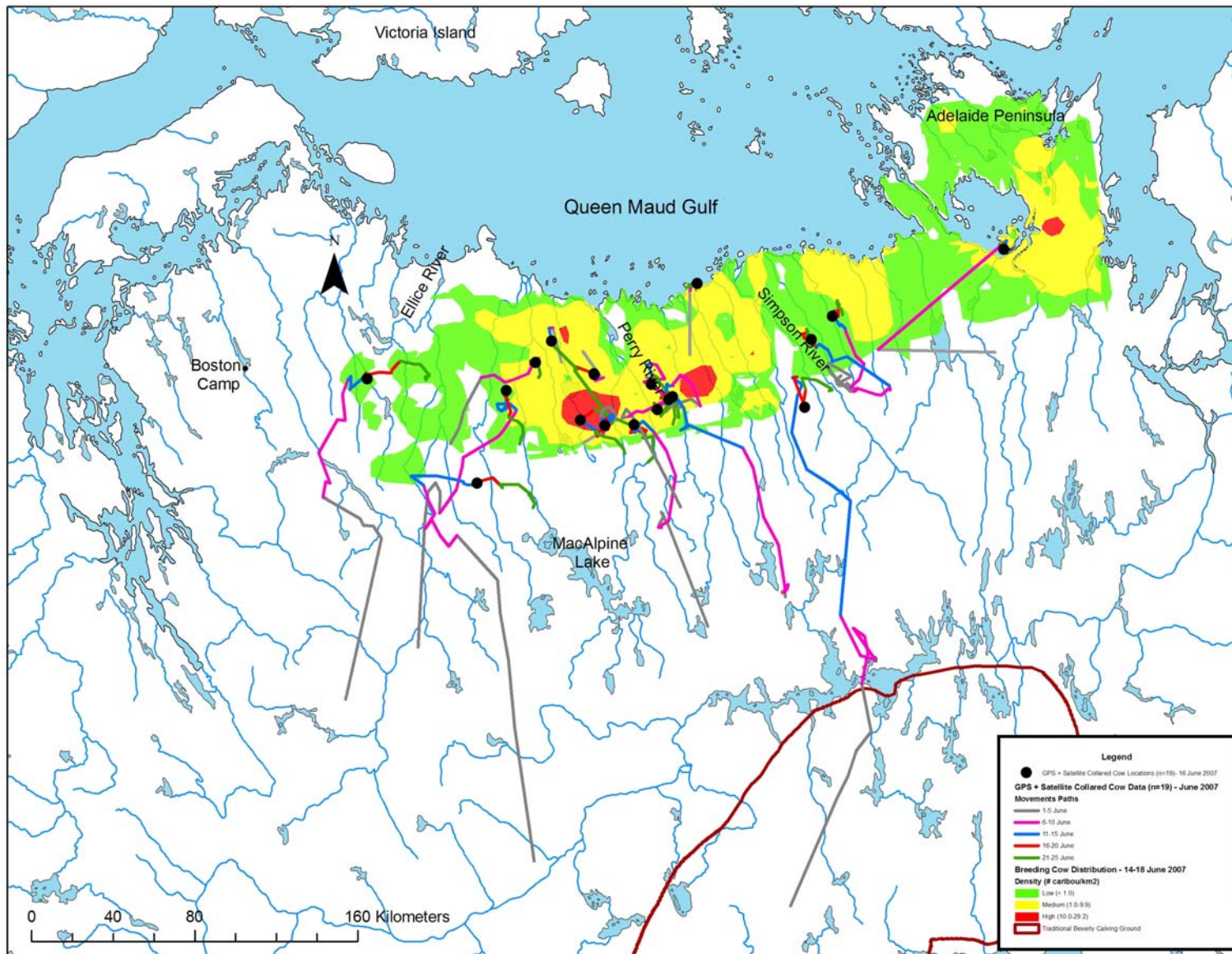


Figure 38. Distribution of GPS and satellite-collared cows (known or assumed to be breeders) relative to the distribution of breeding cows on the Ahlak calving ground, June 2008.

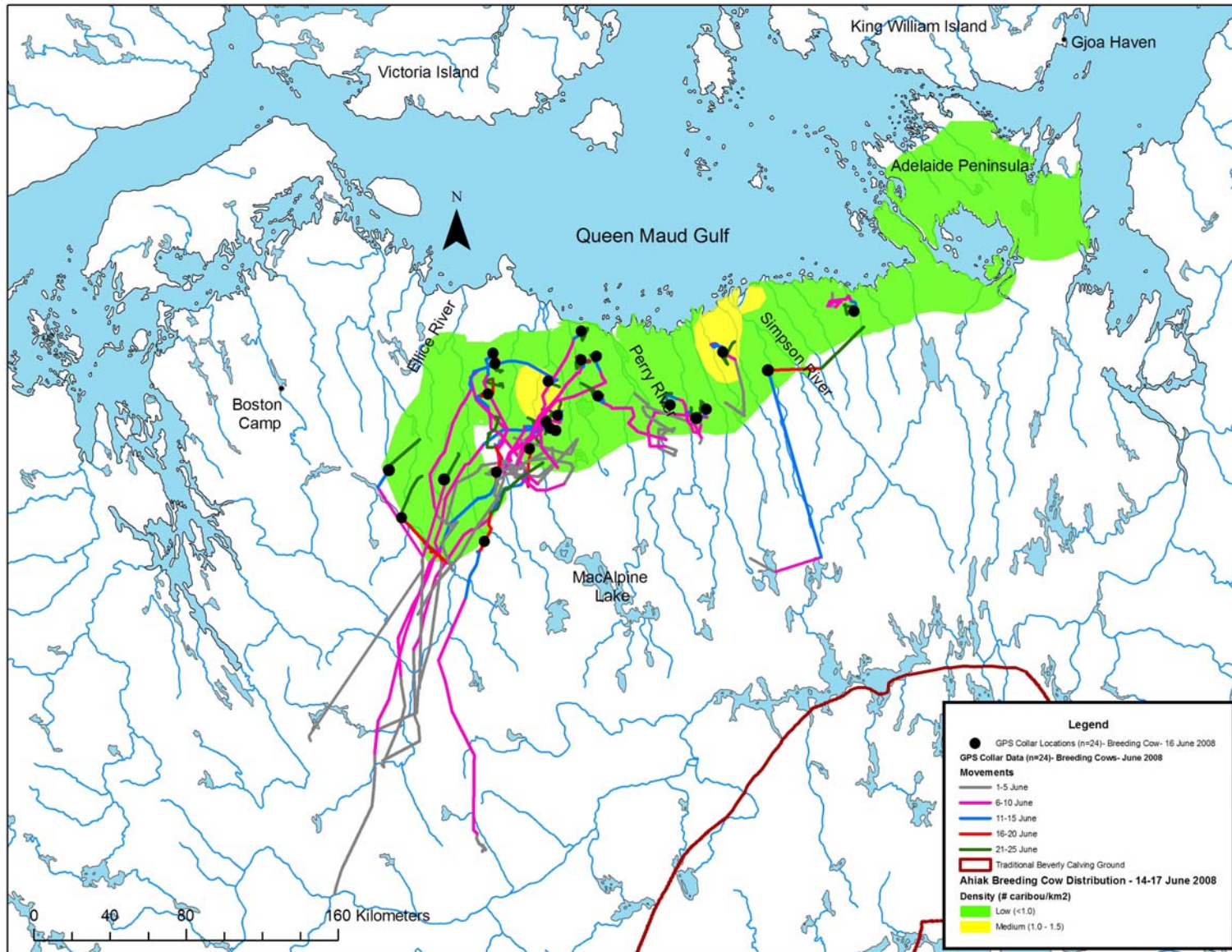




Figure 39. Distribution of GPS and satellite-collared cows (known to be non-breeders) relative to the distribution of breeding cows on the Ahlak calving ground, June 2008.

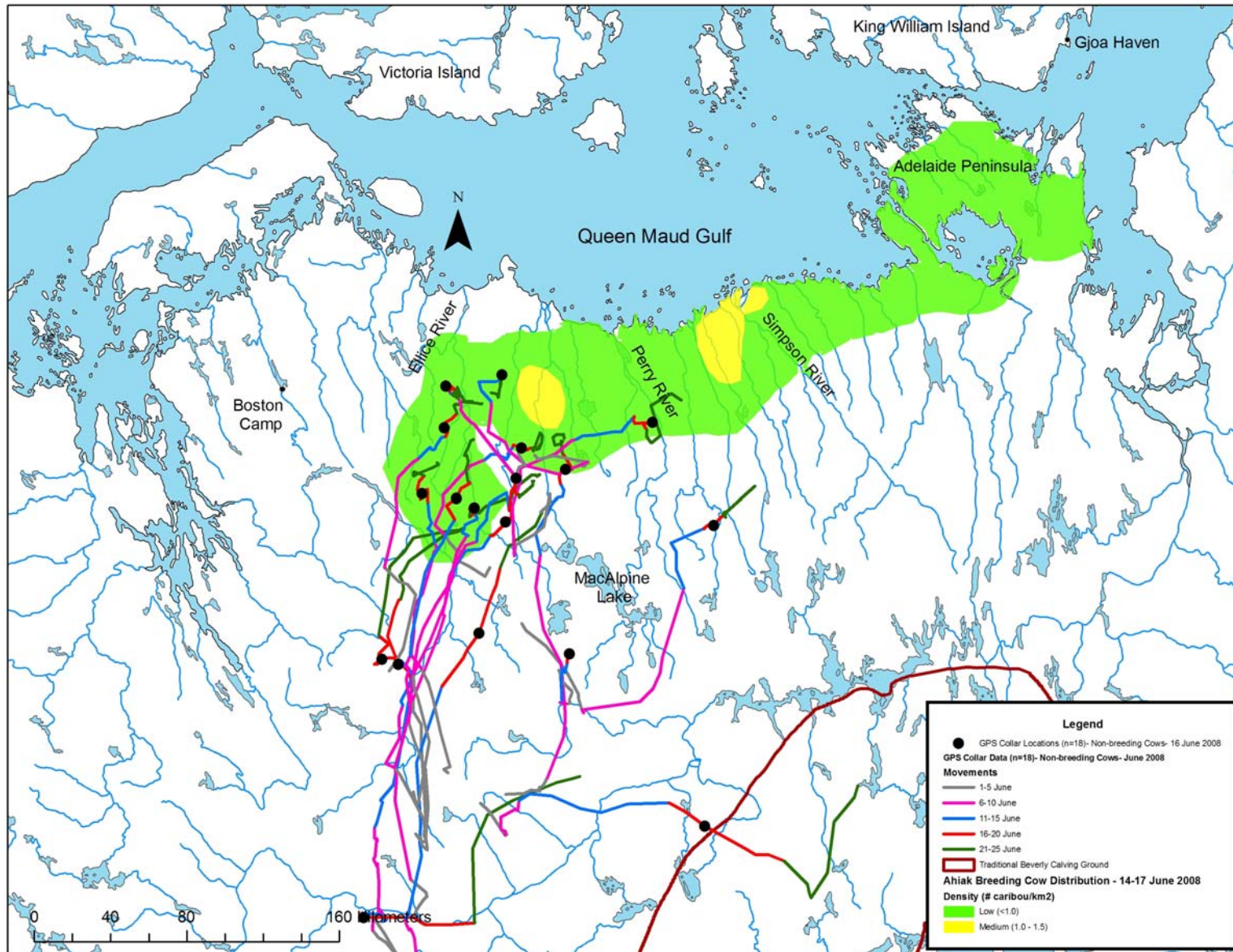


Figure 40. Extent of the annual calving grounds of the Ahiak herd based on surveys completed in 2006, 2007 and 2008. years different areas within the calving grounds were used.

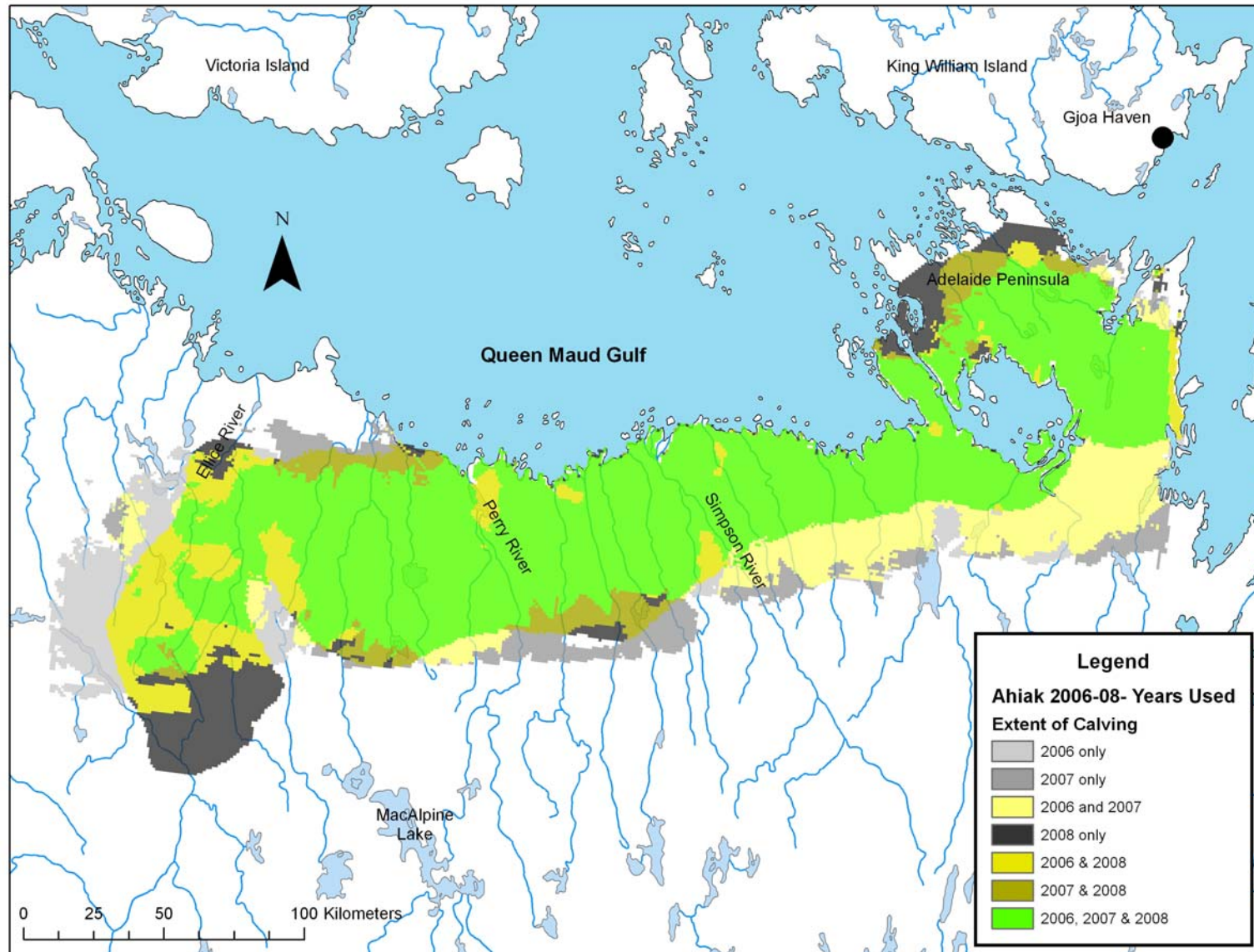




Figure 41. Extent of the annual calving grounds of the Ahiak herd based on surveys completed in 2006, 2007 and 2008. number of years different areas within the calving grounds were used.

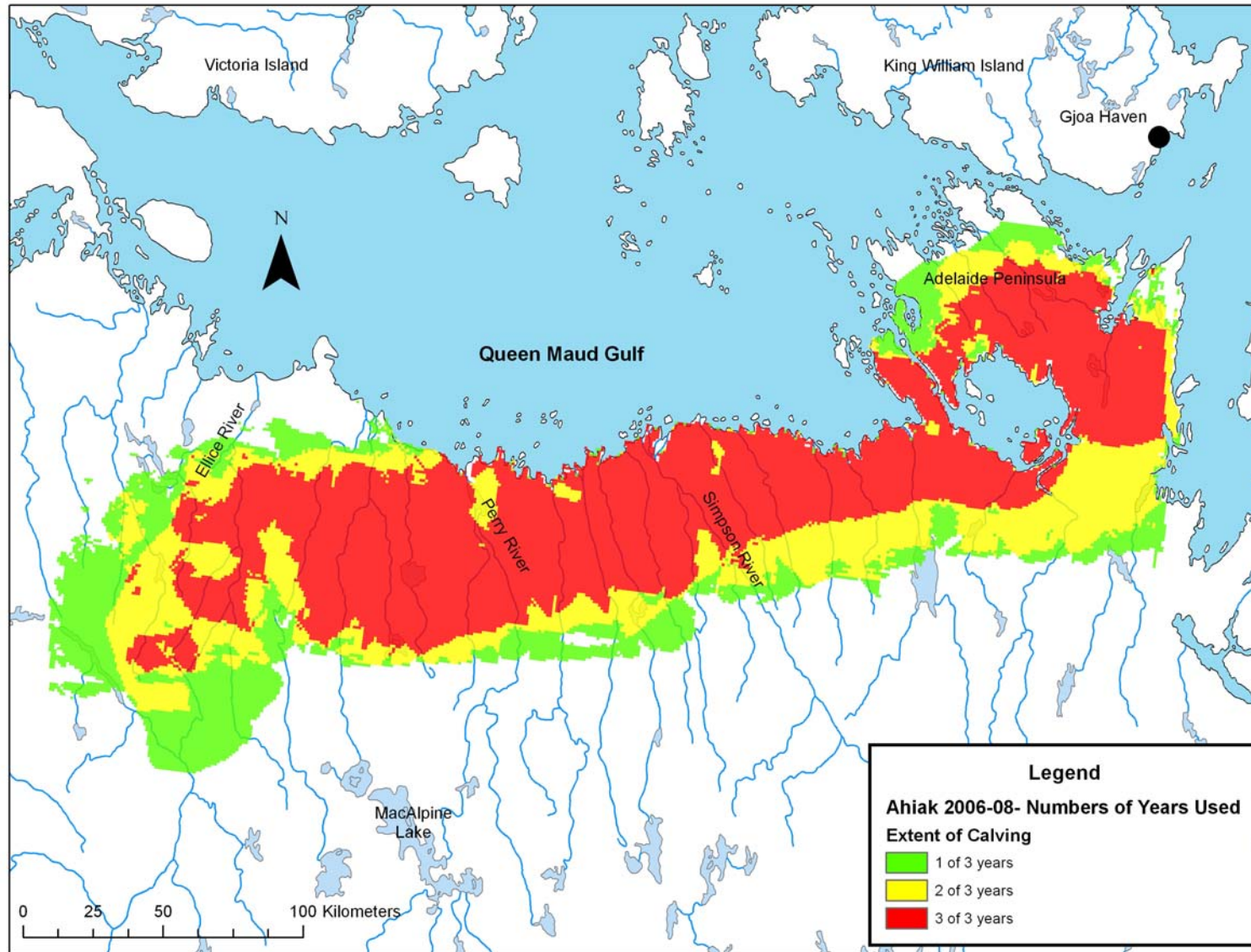


Figure 42. Distribution of GPS cows captured 50 km north of Baker Lake May 2008 relative to the distribution of breeding cows on the Ahlak calving area, June 2008.

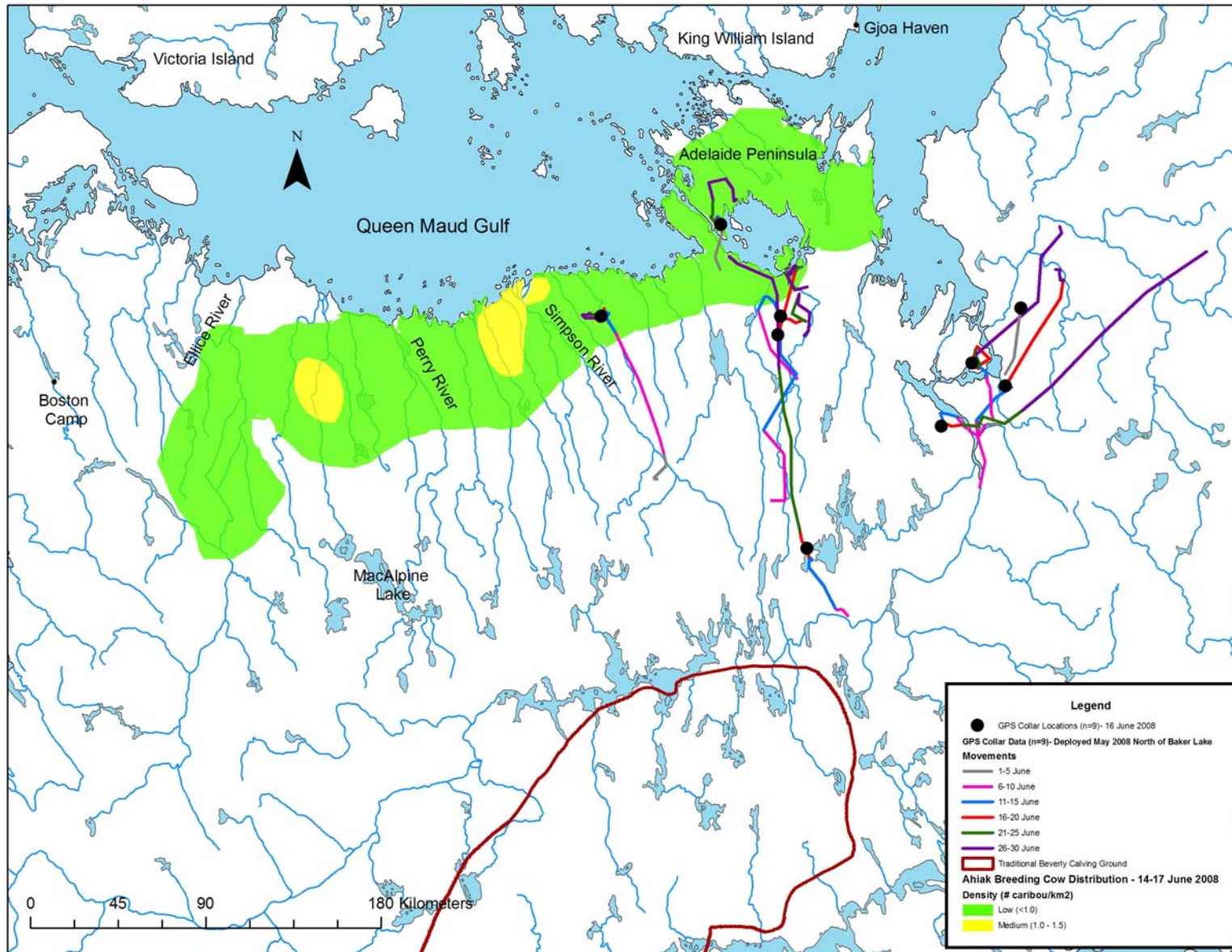




Figure 43. Location of GPS collared cow and observations of breeding cows on the Boothia Peninsula, 18 June 2008.

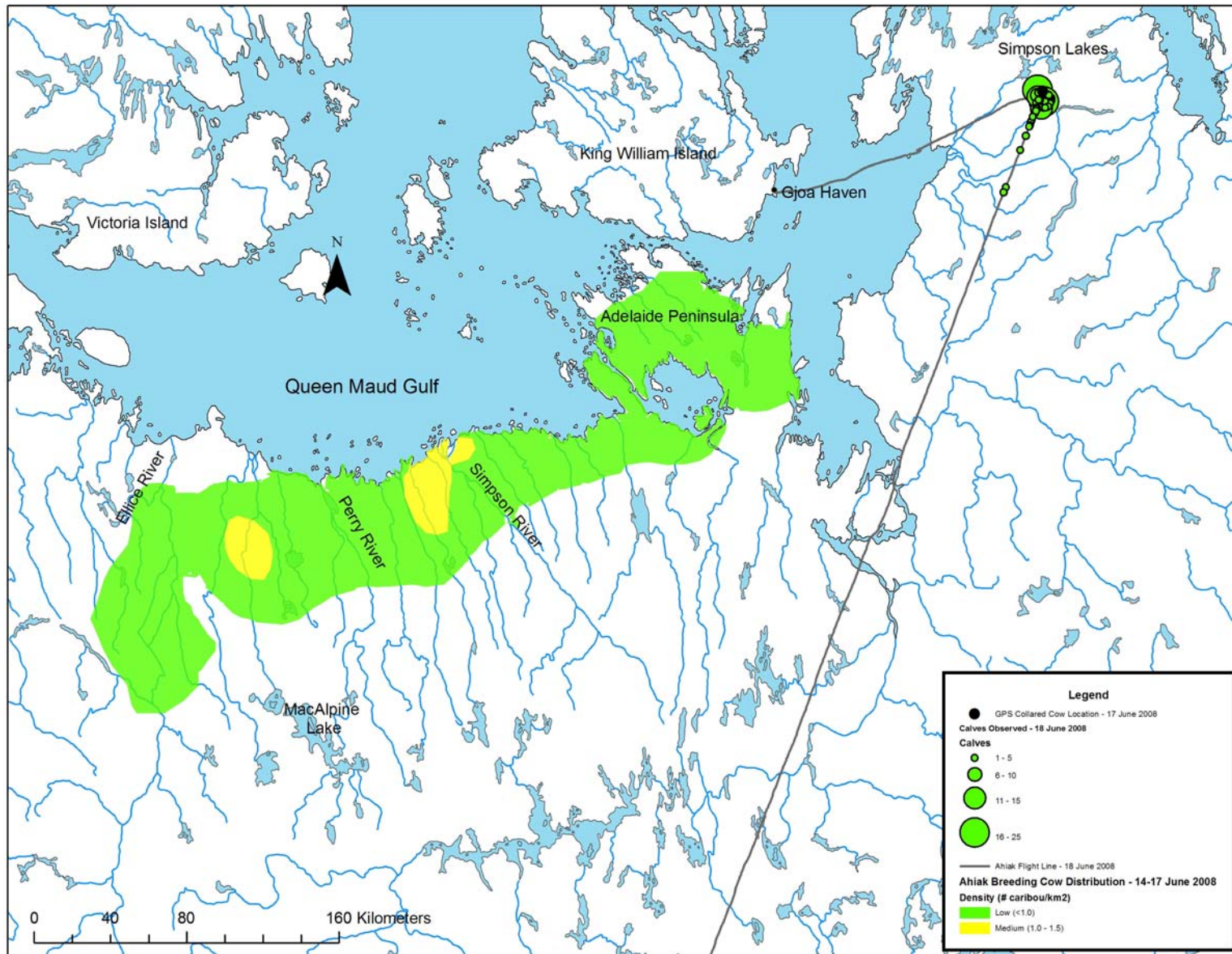


Figure 44. Deployment and 16 June 2008 locations of cows collared 50 km north of Baker Lake May 2008; and 1 April and 16 June 2008 locations of a collared cow from the Ahlak herd that calved on the Boothia Peninsula.

