

# Status of Shared NWT/Nunavut Barren-ground Caribou Herds

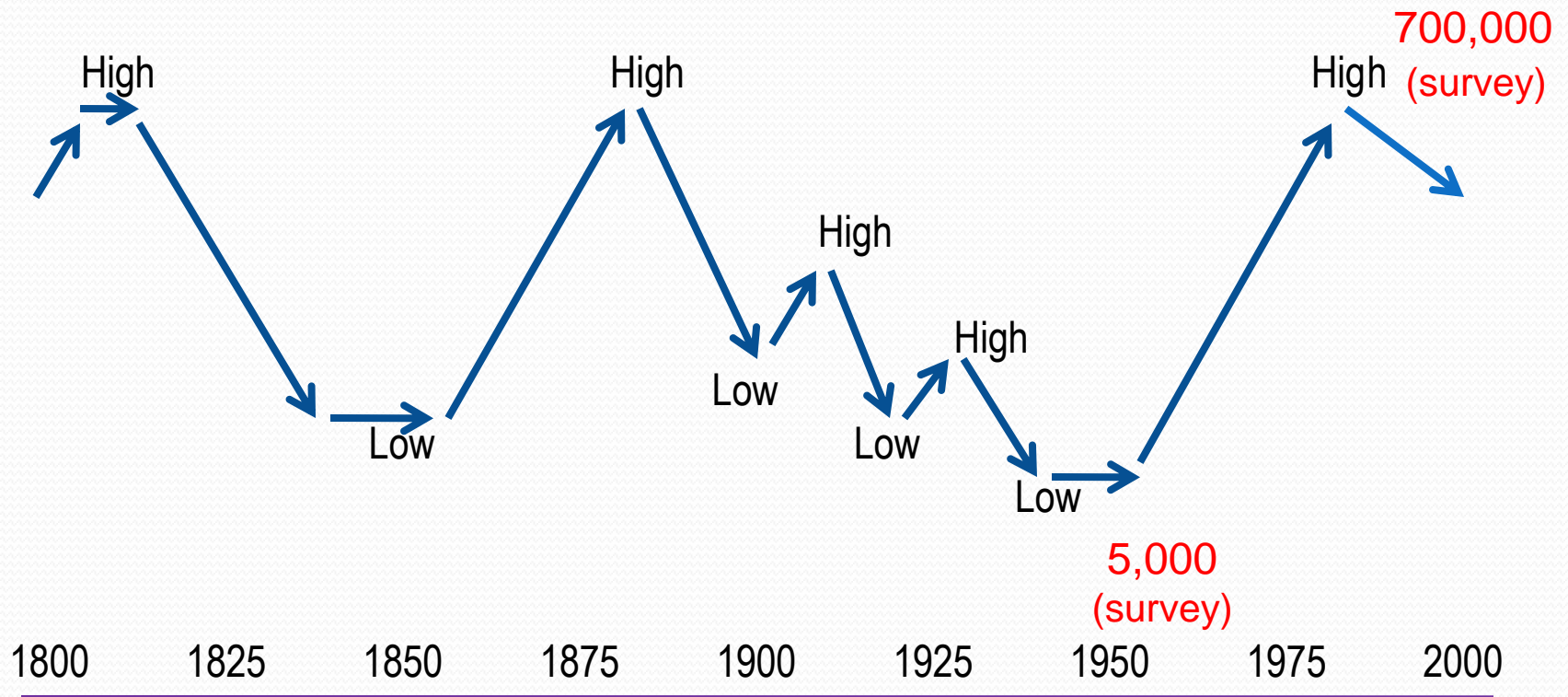
## Nunavut Wildlife Management Board



Environment and Natural Resources  
Government of the Northwest Territories  
December 3, 2009

# George River Herd, Quebec/Labrador – Changes in Numbers

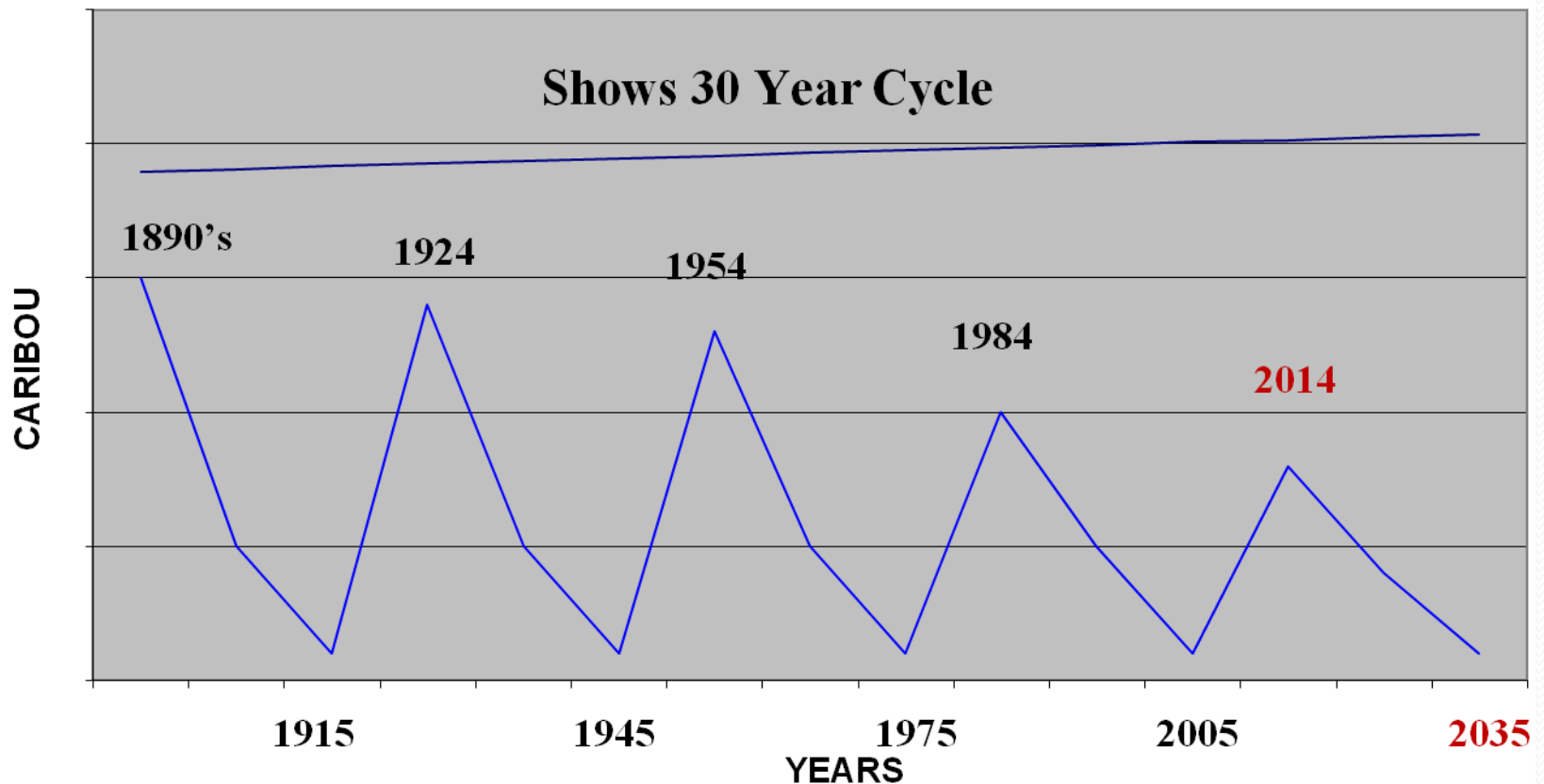
(based on spruce root scars & other information)



(adapted from Bergerud et al. 2008, The return of caribou to Ungava)

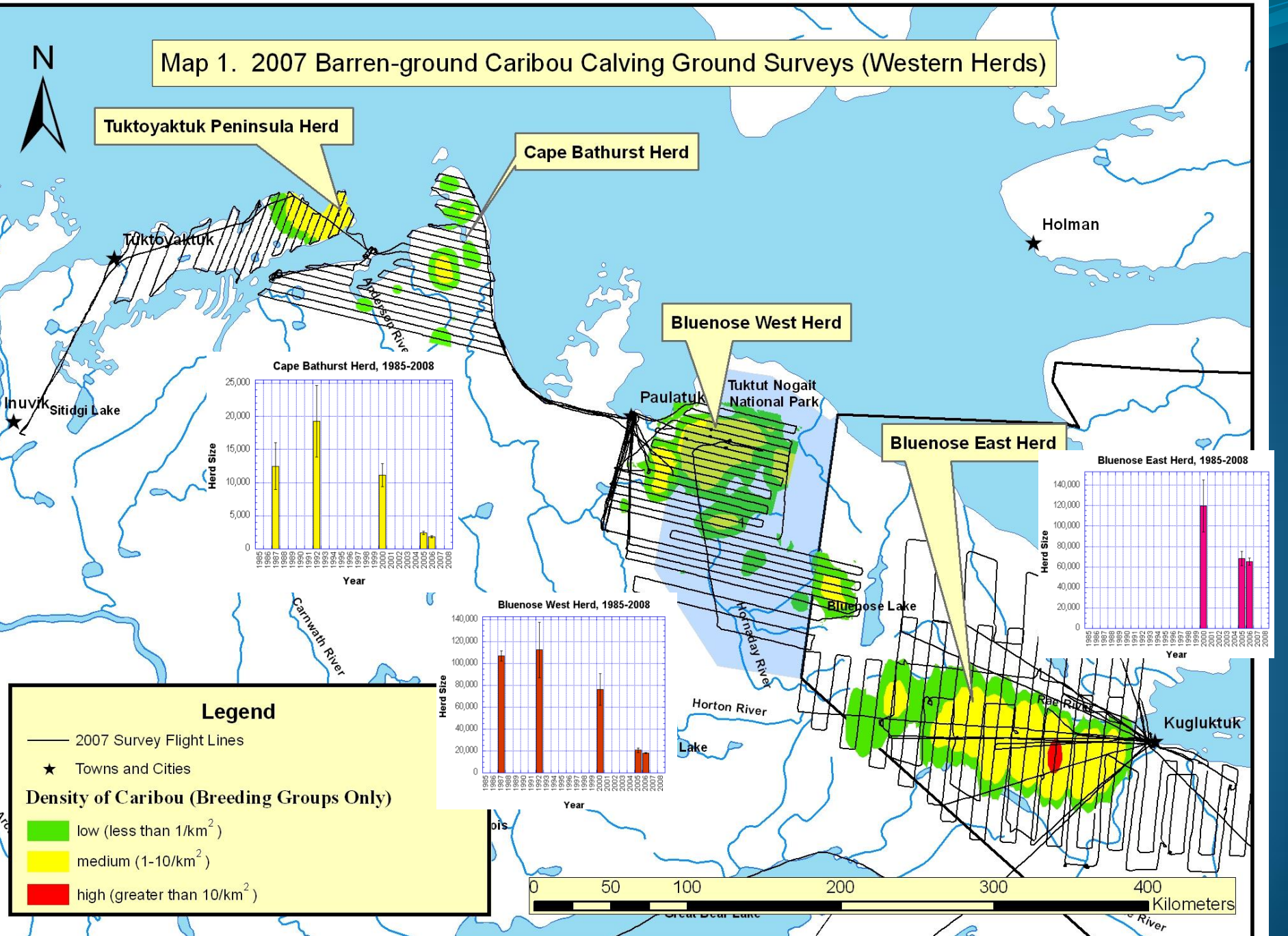


## Caribou Cycles from Chipewayan Traditional Knowledge (Danny Beaulieu)



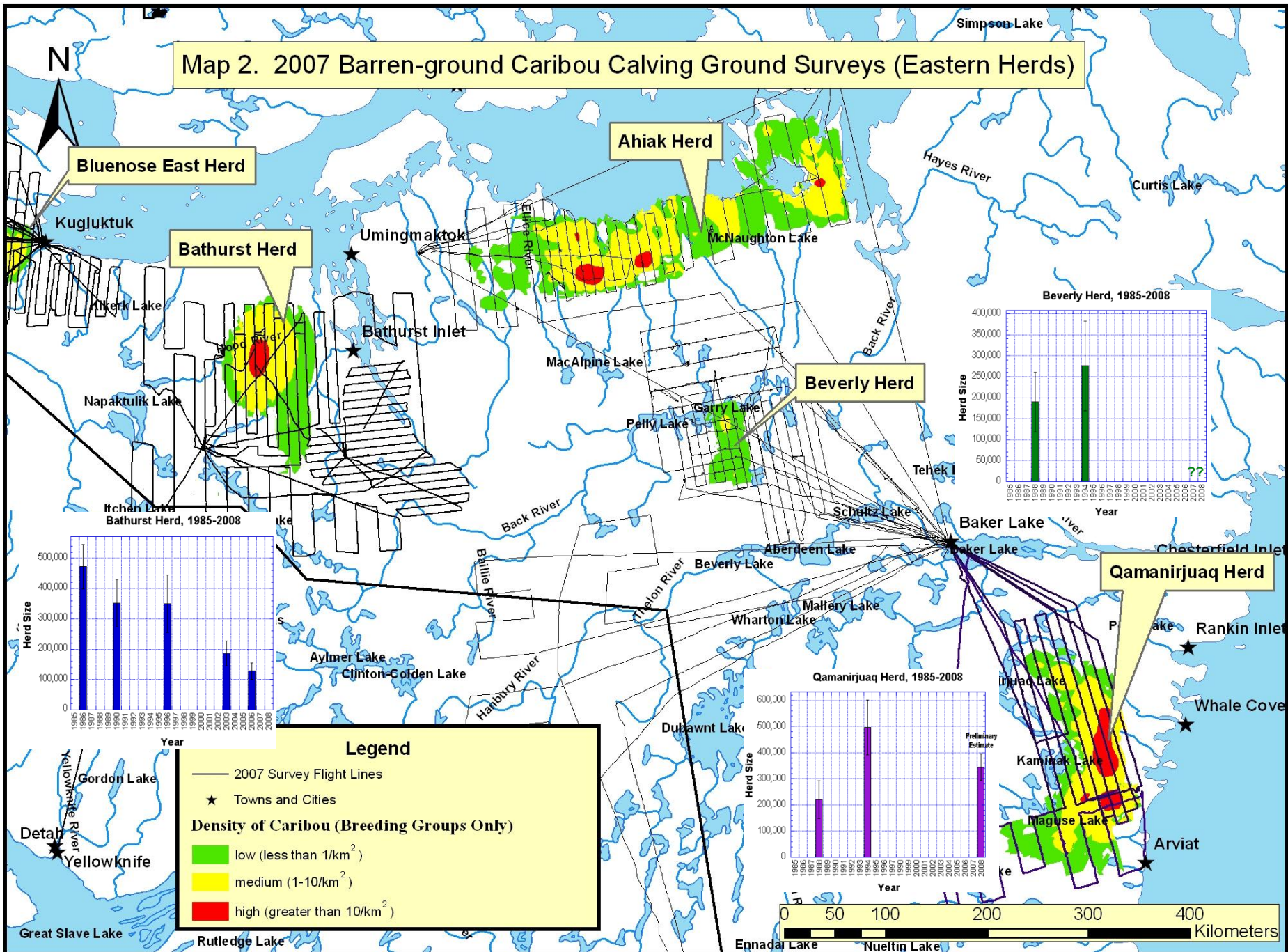


Map 1. 2007 Barren-ground Caribou Calving Ground Surveys (Western Herds)

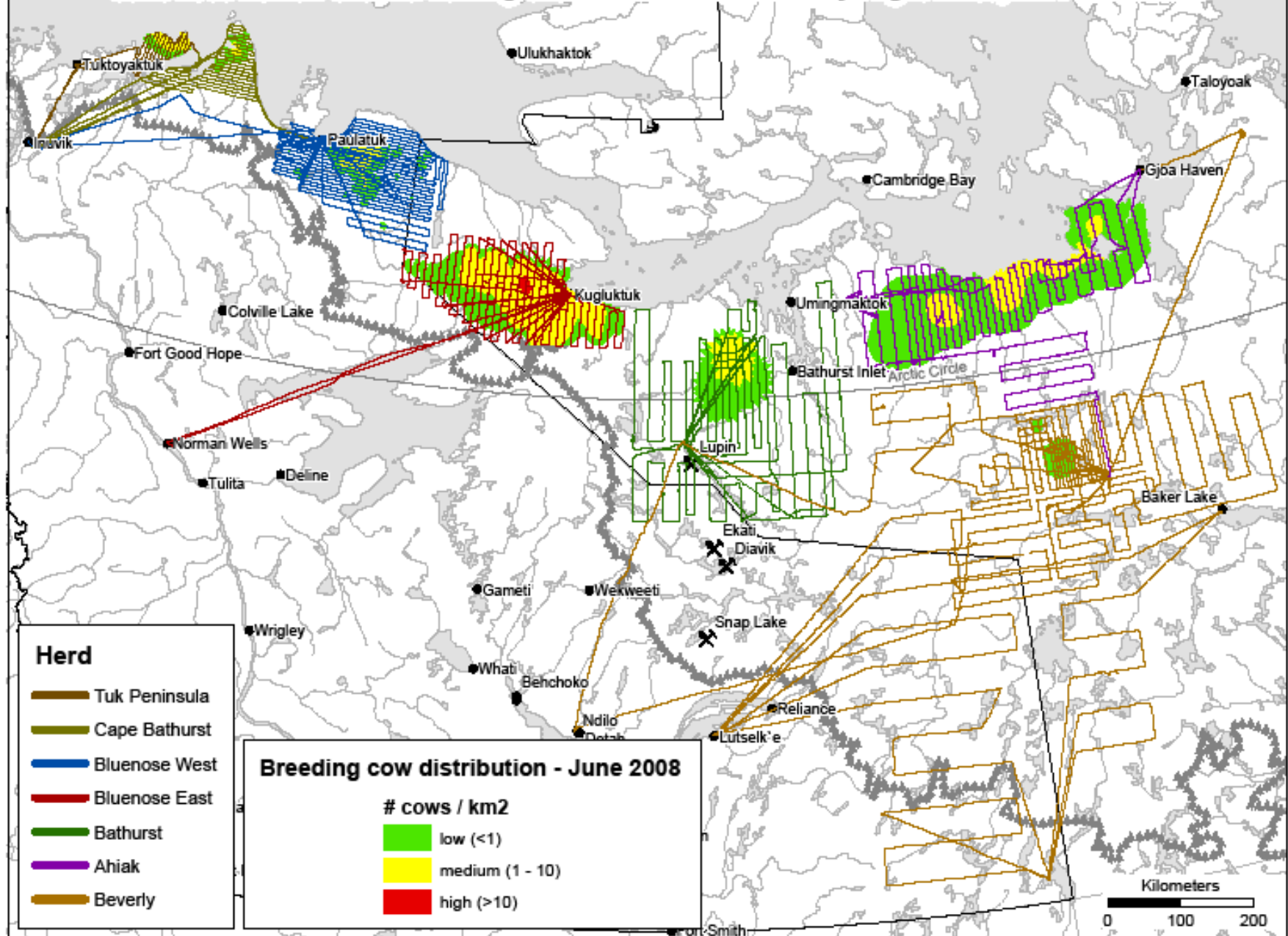




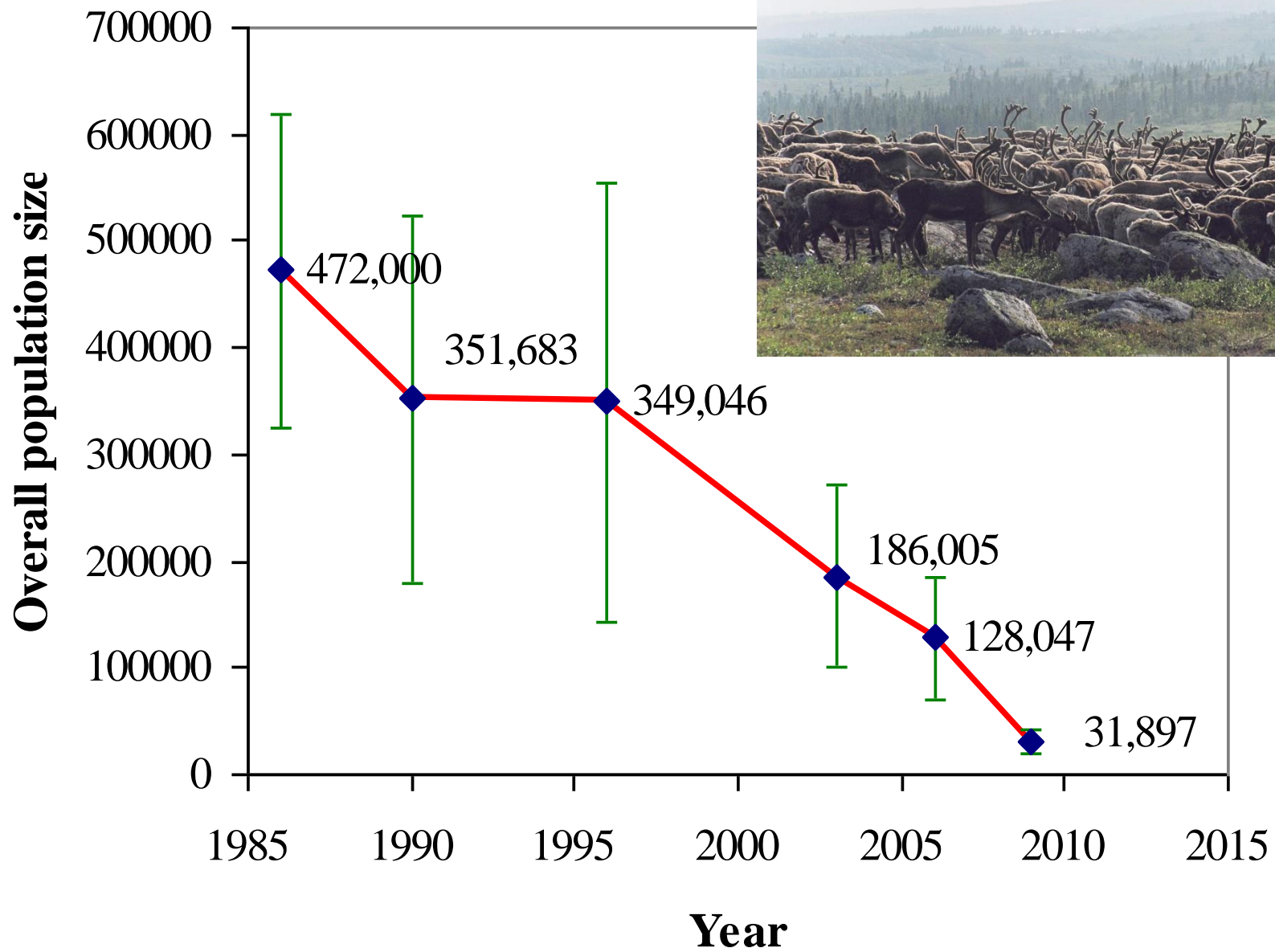
Map 2. 2007 Barren-ground Caribou Calving Ground Surveys (Eastern Herds)



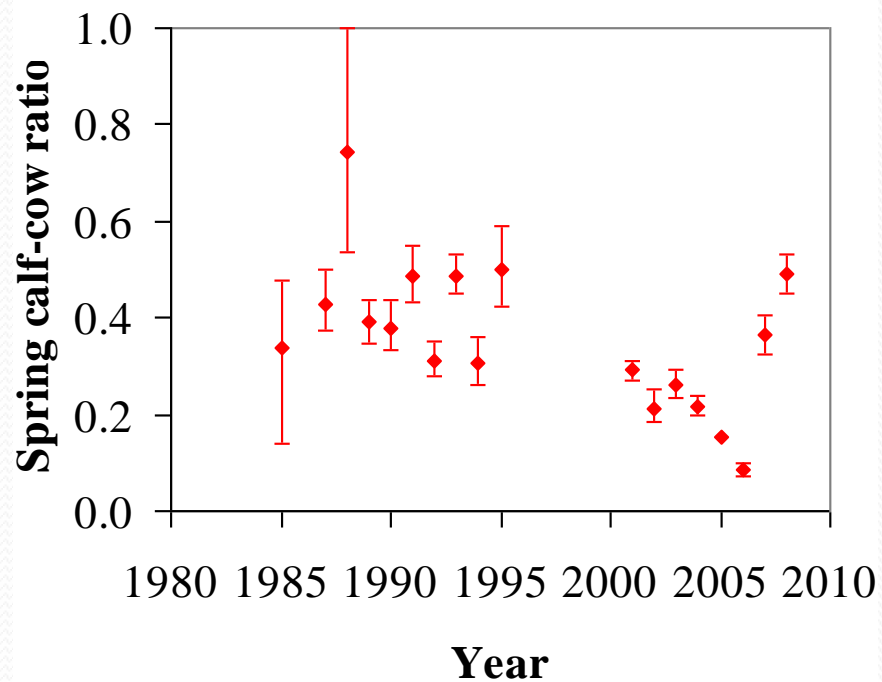
# June 2008 Barren-Ground Calving Ground Distribution Survey Flight-Lines, NWT & Nunavut





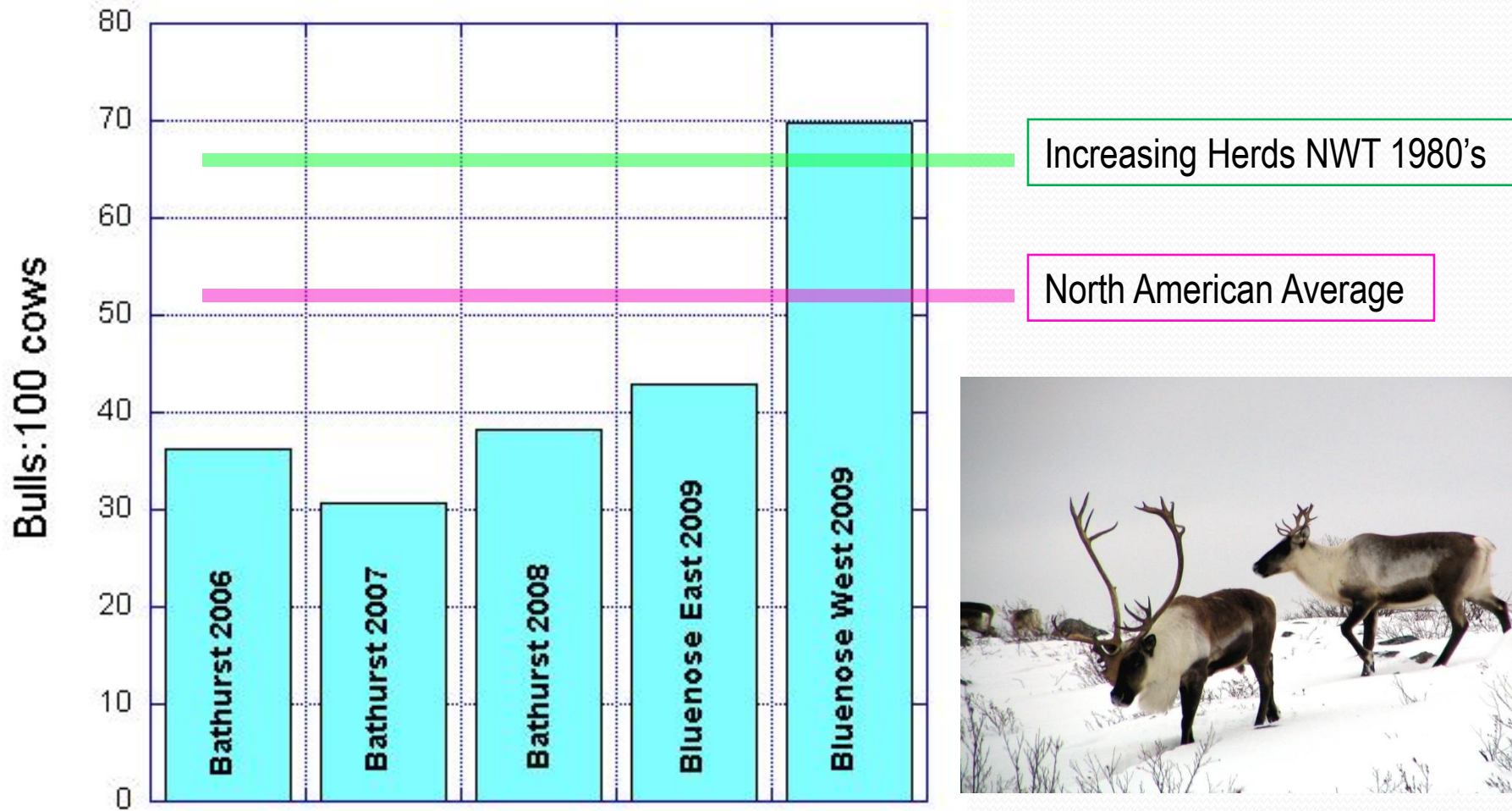


## Bathurst Spring Calf:Cow Ratios 1985-2008

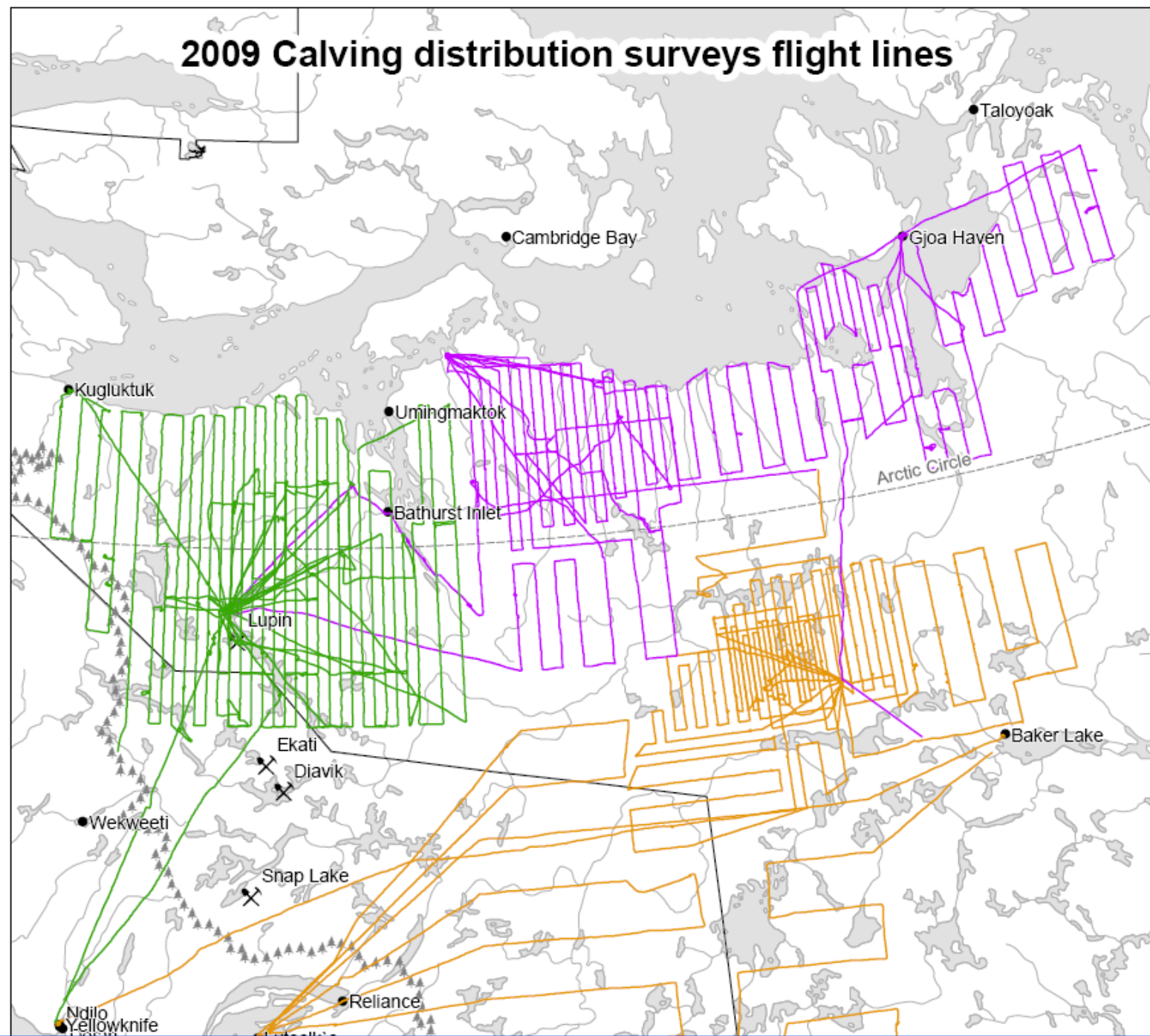




# Sex Ratio in Bathurst & Other Caribou Herds



## 2009 Calving distribution surveys flight lines



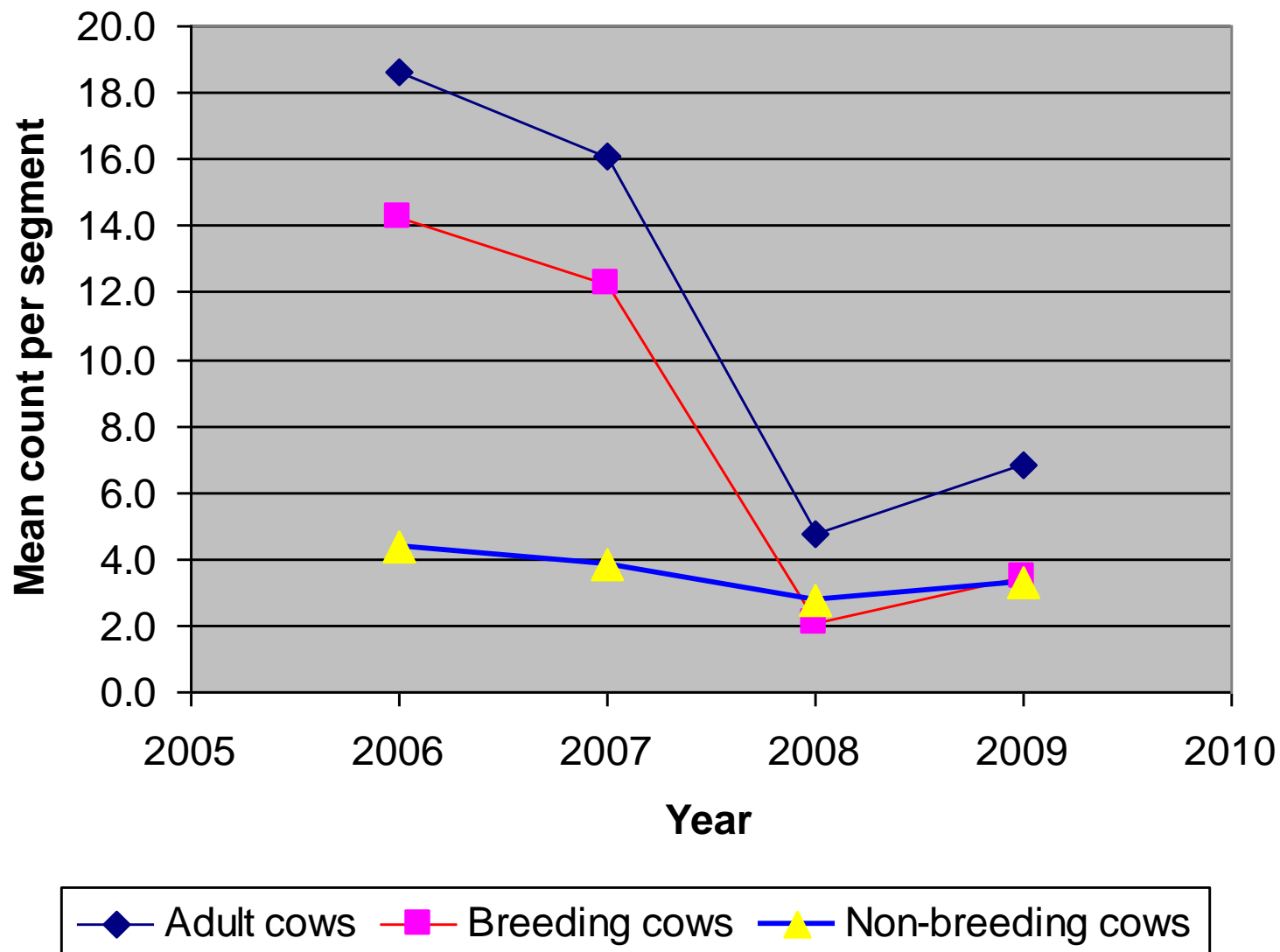
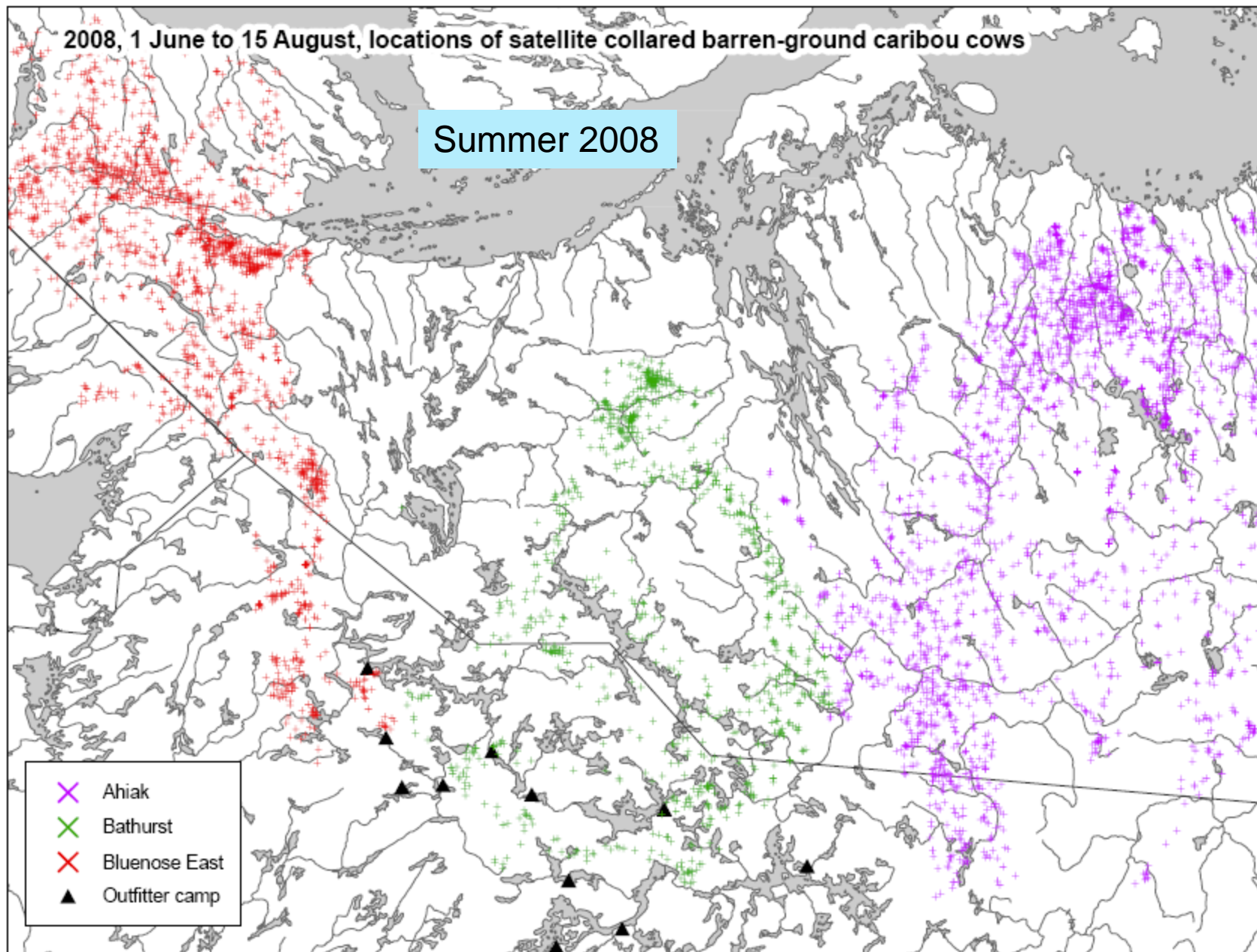


Figure . Average number of breeding cows, non-breeding cows, and adult cows (sum of breeding and non-breeding cows) observed per 10-km flight line segment on transect during calving reconnaissance surveys in June 2006, 2007, 2008 and 2009 on the Ahiak calving ground.



2008, 1 June to 15 August, locations of satellite collared barren-ground caribou cows

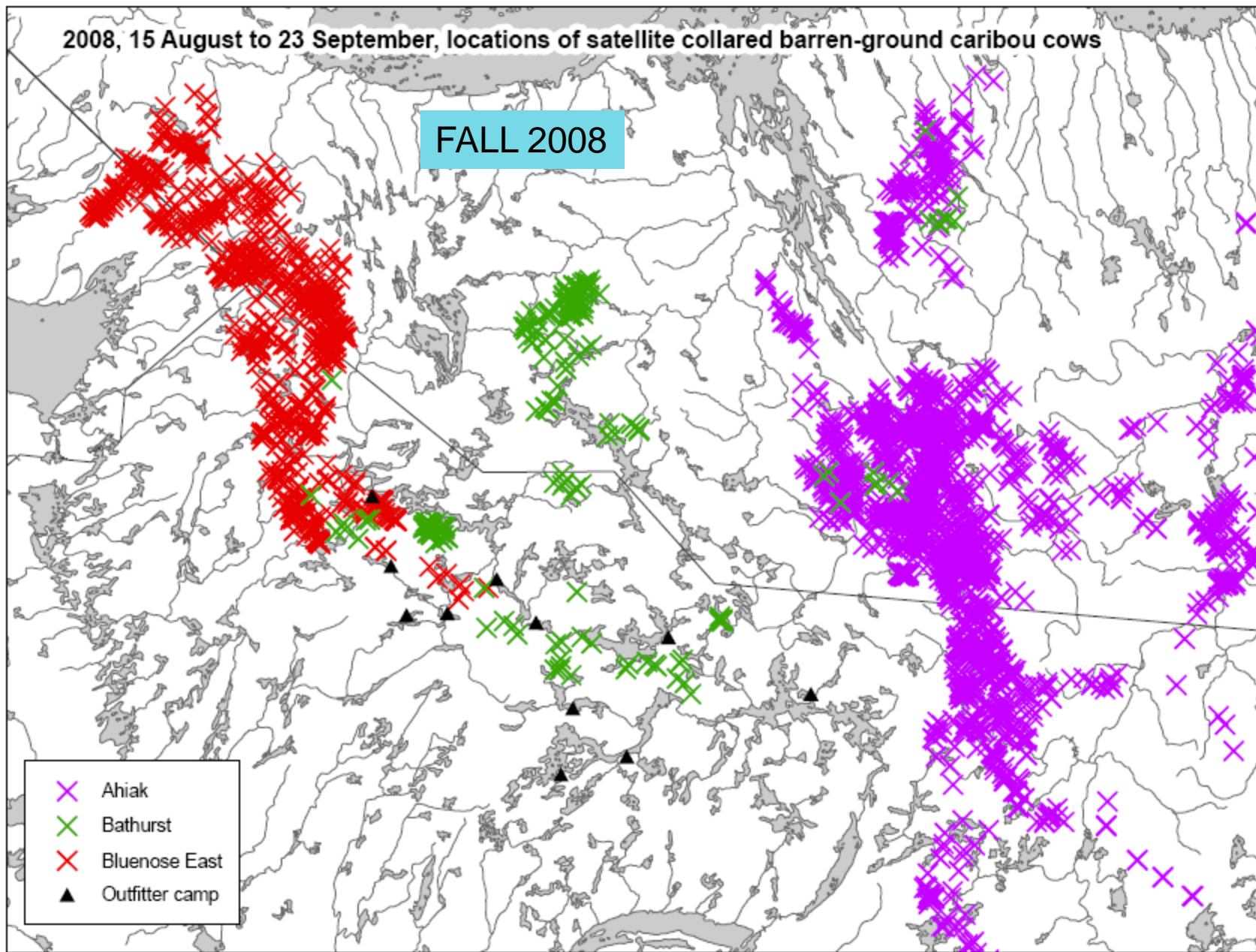
Summer 2008



2008, 15 August to 23 September, locations of satellite collared barren-ground caribou cows

FALL 2008

- ✕ Ahiak
- ✕ Bathurst
- ✕ Bluenose East
- ▲ Outfitter camp





2009, 15 August to 23 September, locations of satellite collared barren-ground caribou cows

FALL 2009

- ▲ Outfitter camp
- ✕ Ahiak
- ✕ Bathurst
- ✕ Bluenose East

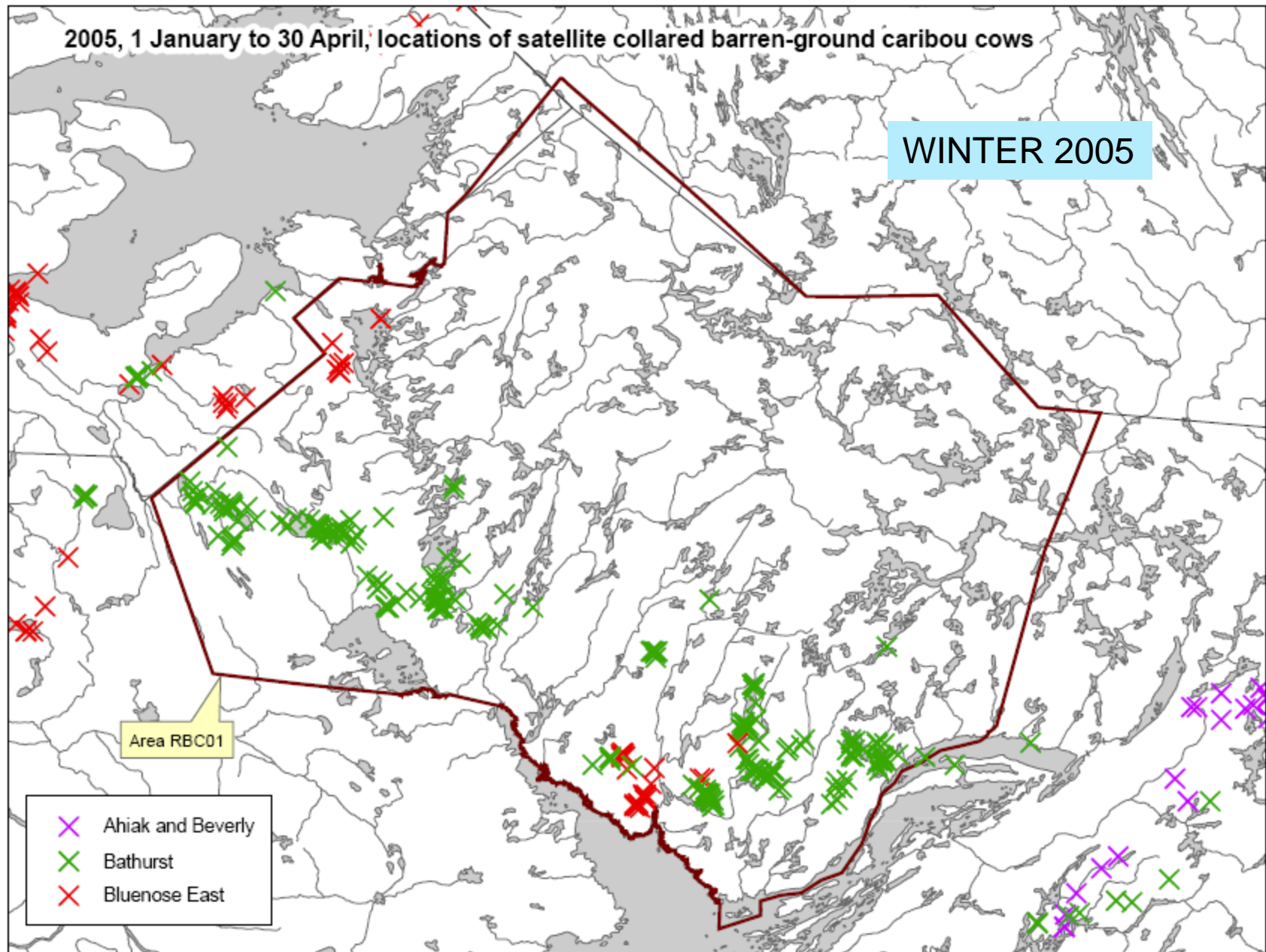
Label	Outfitter
a	Peterson's Point Lake Lodge
b	Bathurst Inlet Dev - Whitewolf Lake
c	Camp Ekwo
d	Adventure Northwest - Little Marten Lake
e	Arctic Safaris - Obstruction Rapids Camp
f	Aurora Caribou Camp
h	Qalivik - Courageous Lake Camp
i	True North Safaris - Warburton Bay Lodge
j	Mackay Lake Lodge
k	Qalivik - Lac De Gras East Camp
l	Aylmer Lake Lodge

R/BC/01



2005, 1 January to 30 April, locations of satellite collared barren-ground caribou cows

WINTER 2005

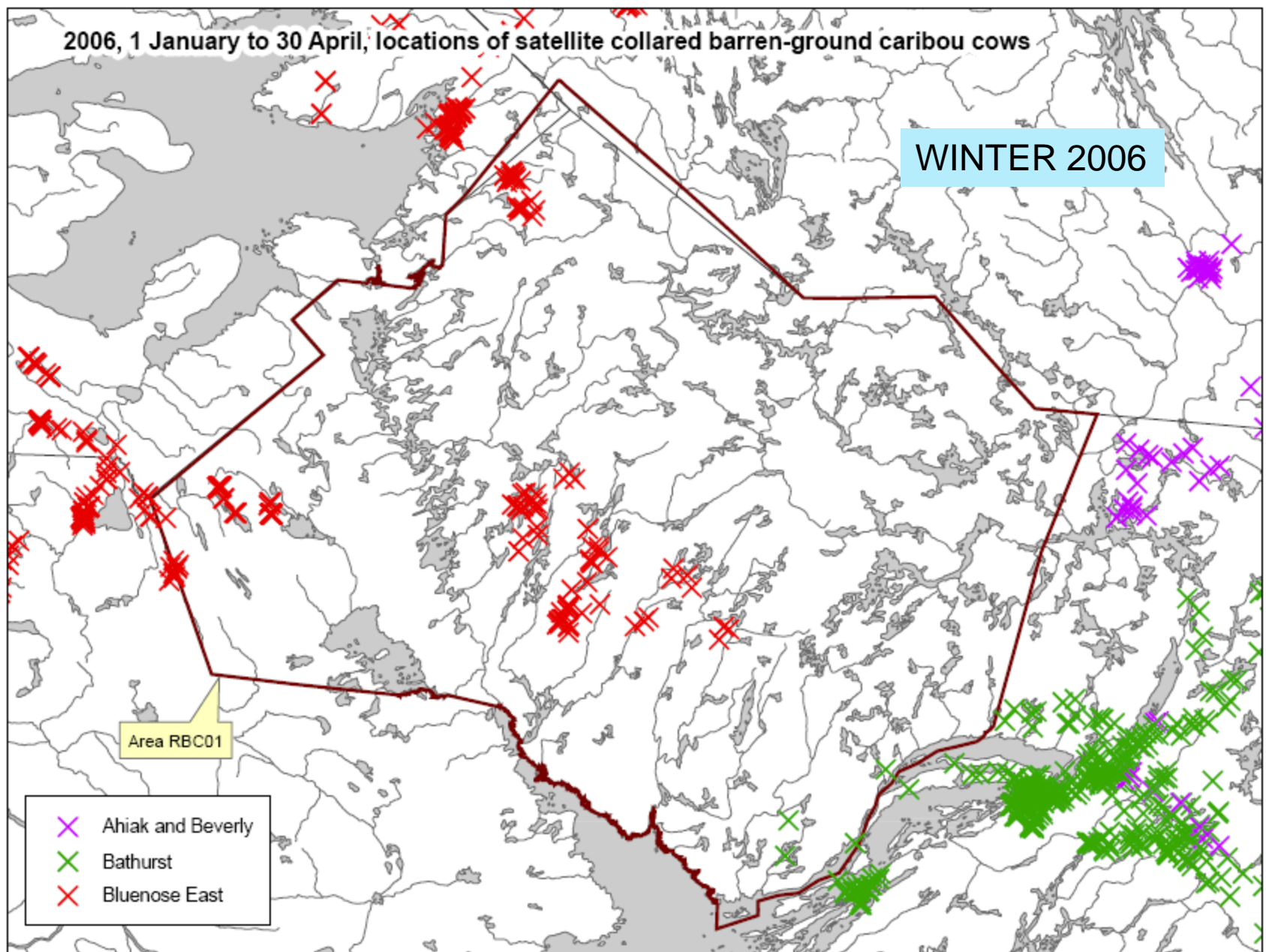


2006, 1 January to 30 April, locations of satellite collared barren-ground caribou cows

WINTER 2006

Area RBC01

- ✕ Ahiak and Beverly
- ✕ Bathurst
- ✕ Bluenose East

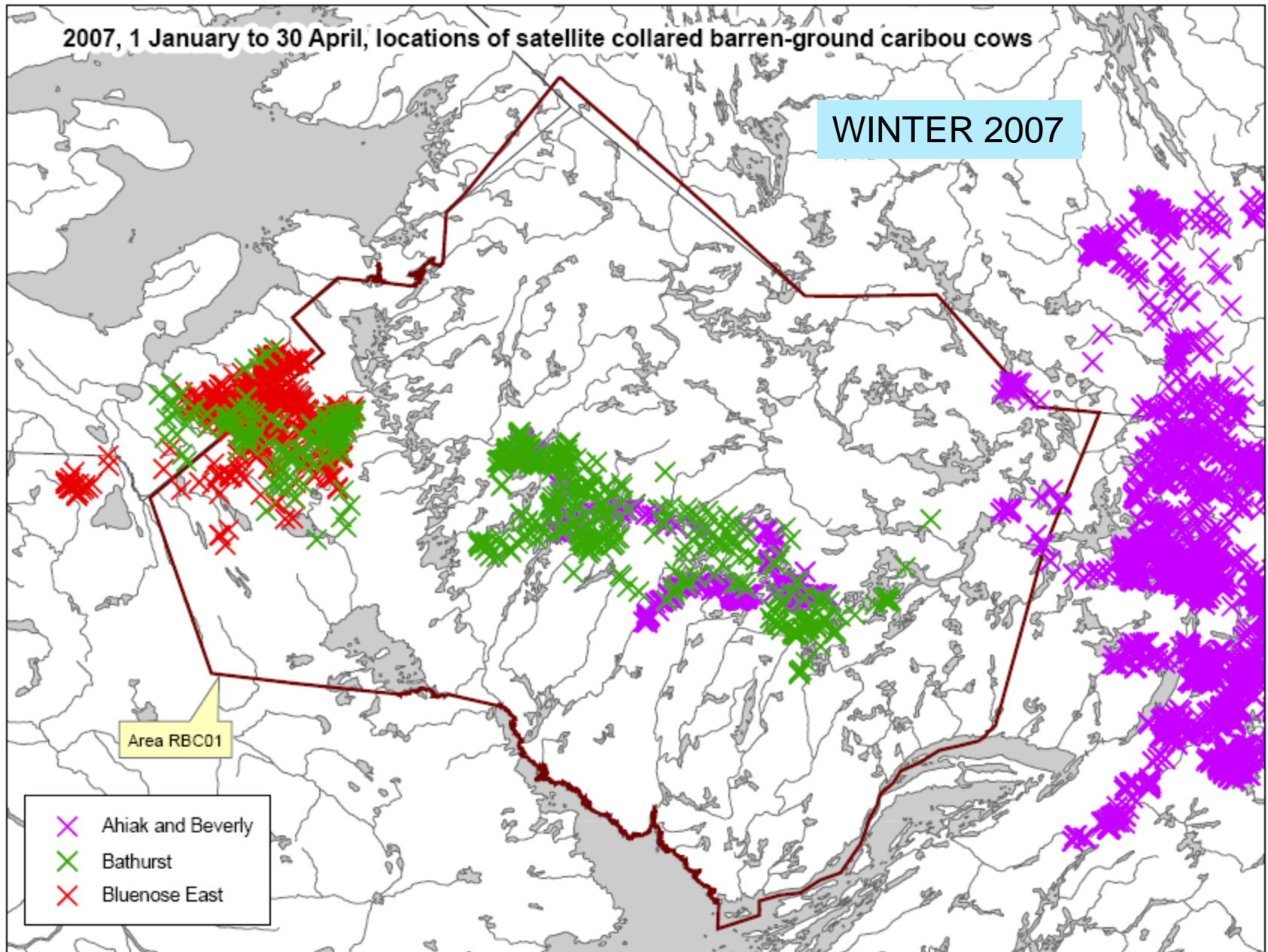


2007, 1 January to 30 April, locations of satellite collared barren-ground caribou cows

WINTER 2007

Area RBC01

- ✕ Ahiak and Beverly
- ✕ Bathurst
- ✕ Bluenose East



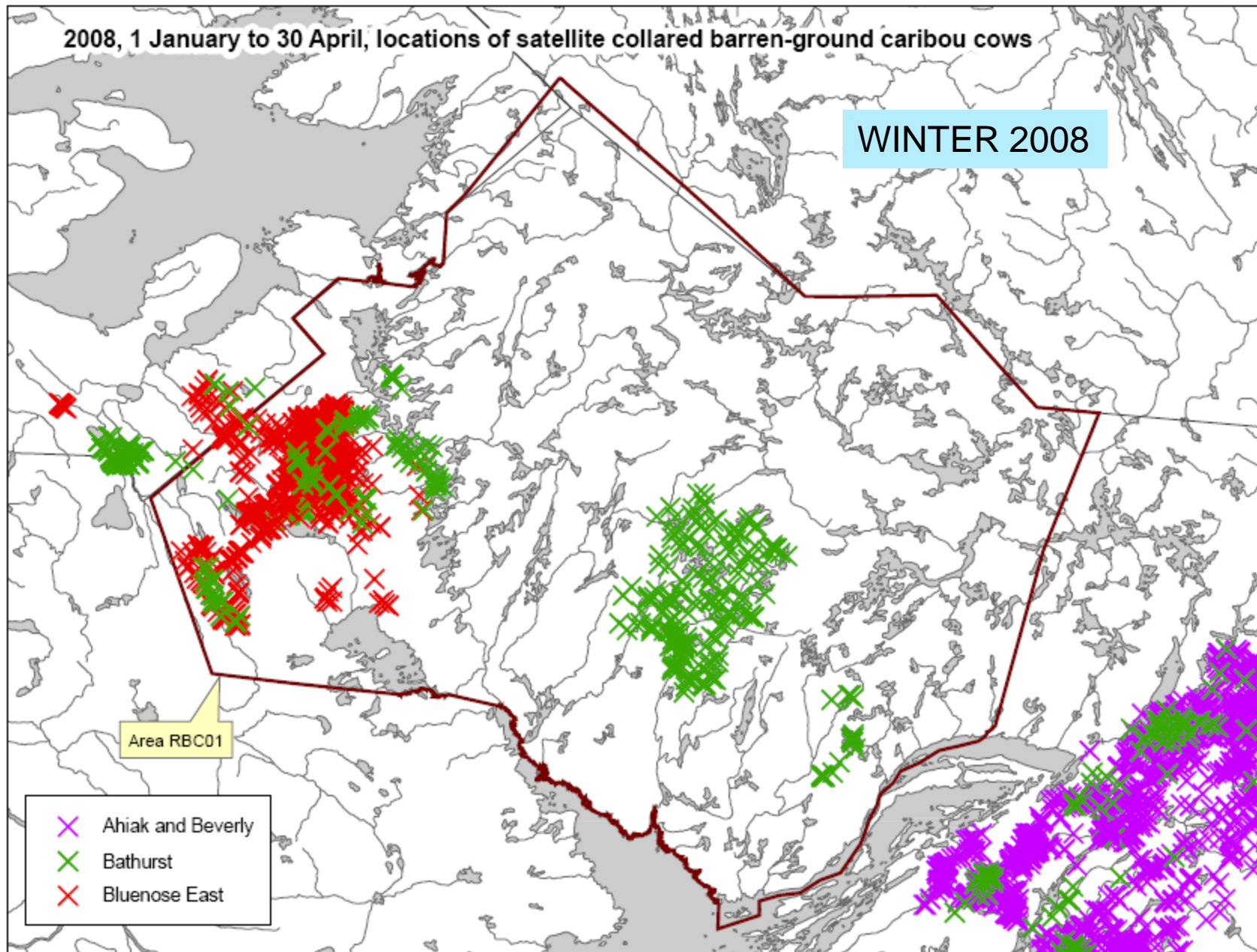


2008, 1 January to 30 April, locations of satellite collared barren-ground caribou cows

WINTER 2008

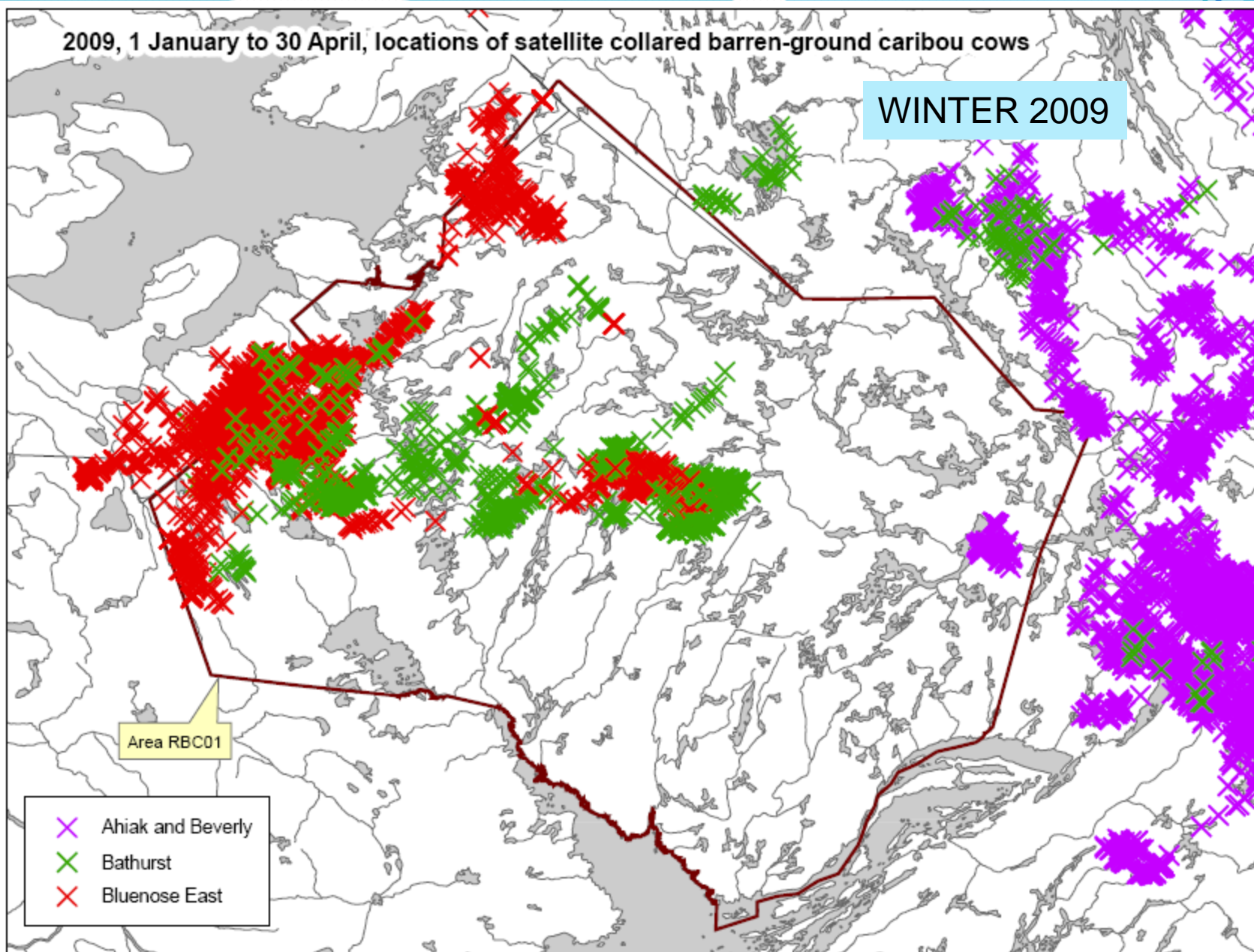
Area RBC01

- ✕ Ahiak and Beverly
- ✕ Bathurst
- ✕ Bluenose East



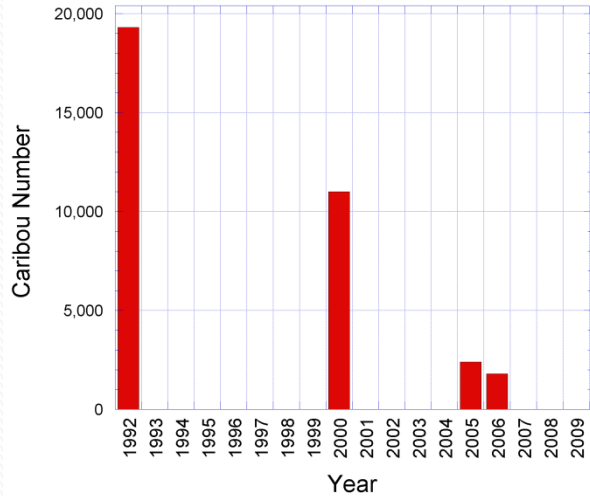
2009, 1 January to 30 April, locations of satellite collared barren-ground caribou cows

WINTER 2009

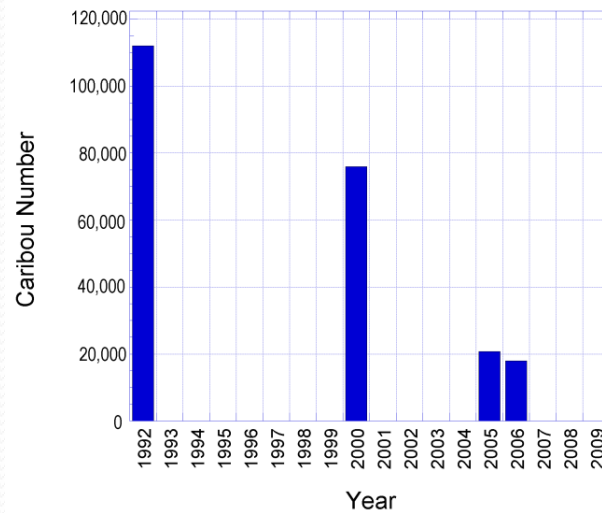


# Declines in the Cape Bathurst, Bluenose West & Bathurst herds

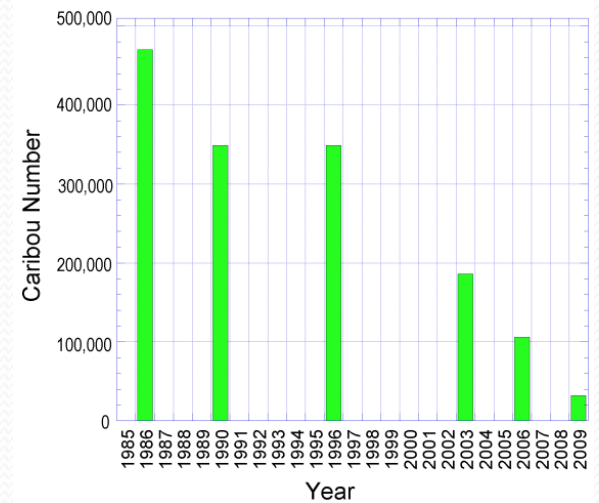
Cape Bathurst Herd 1992-2000



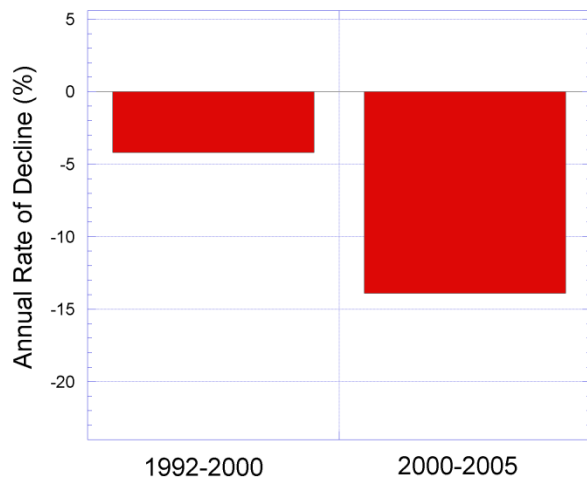
Bluenose West Herd 1992-2008



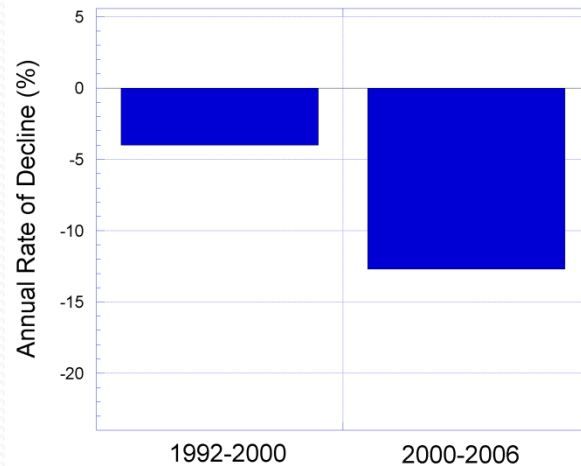
Bathurst Herd Size 1985-2009



Cape Bathurst Herd 1992-2006 - Rate of Decline



Bluenose West Herd 1992-2006 Rate of Decline



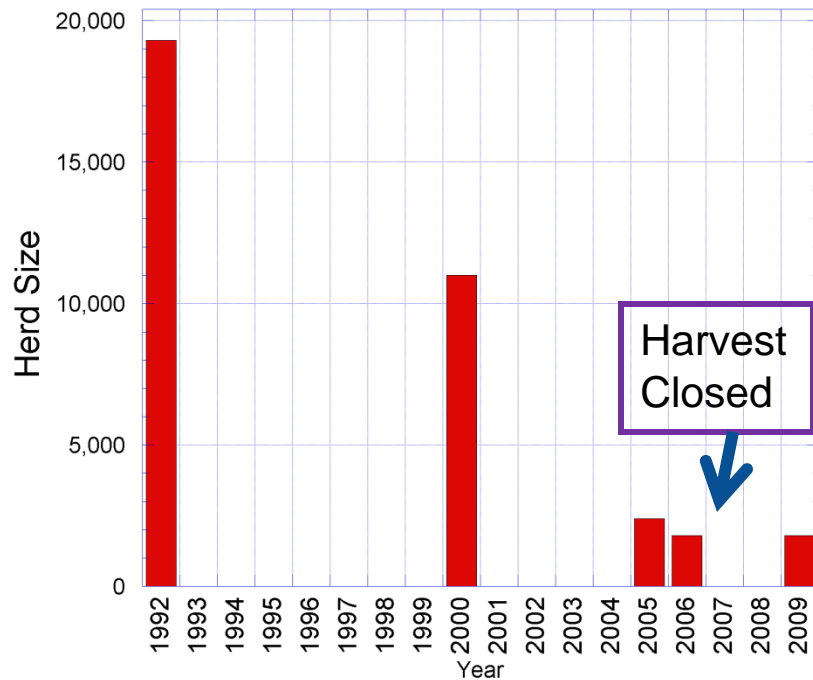
Bathurst Herd 1996-2009 Rate of Decline



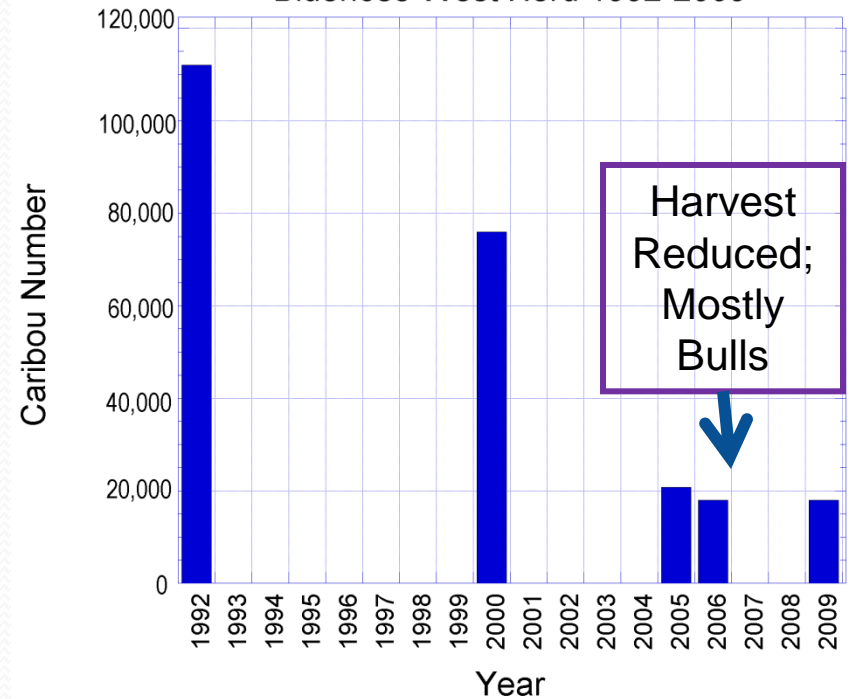


## Cape Bathurst & Bluenose West Herds: *Harvest Management*

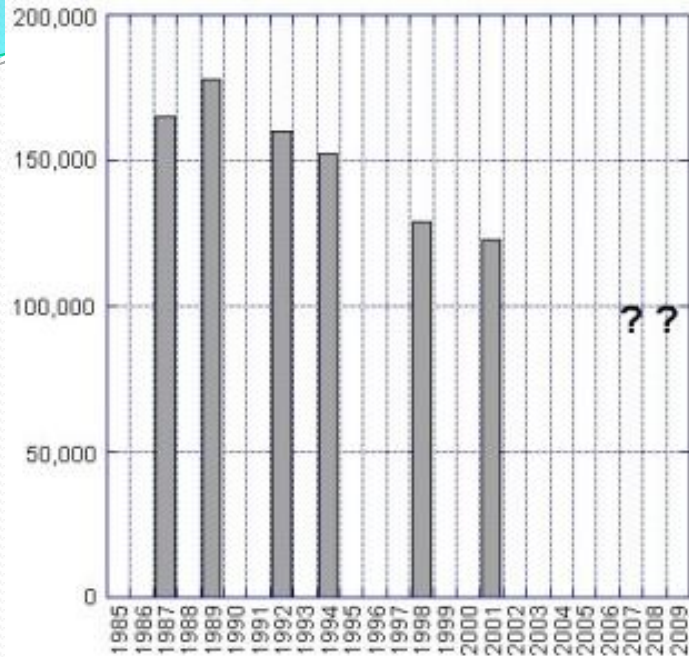
Cape Bathurst Herd 1992-2009



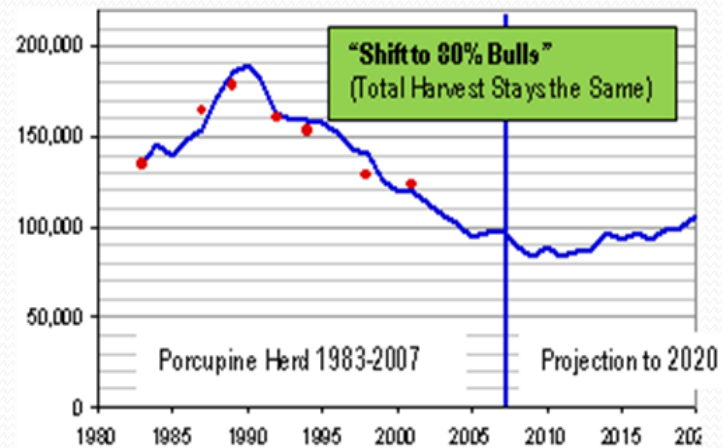
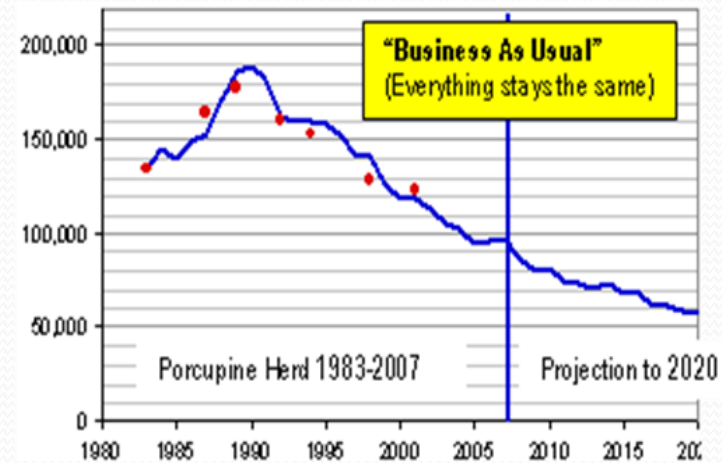
Bluenose West Herd 1992-2009



## Porcupine Herd 1985-2009



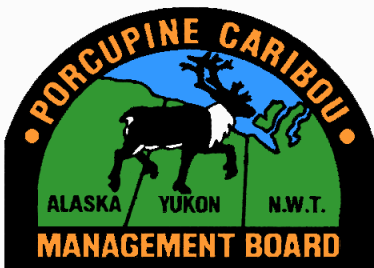
## Porcupine Caribou Calculator



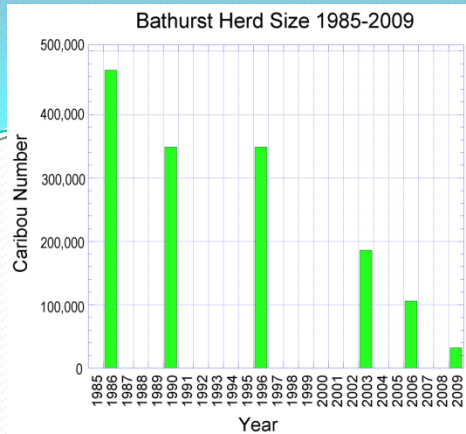
This map illustrates the range of the Porcupine Caribou Herd, which spans across the Yukon and Northwest Territories of Canada and into Alaska, USA. The range is delineated by a thick red line. Key locations and features include:

- Alaska:** Prudhoe Bay, Deadhorse, Arctic Village, Venetie, Beaver, Stevens Village, Circle, Circle Hot Springs, Central, Fox, Eagle, Chena Hot Springs, Big Delta, Reely Lake, Chickadee, Dry Creek, DeL Lake, Tanacross, Tetlin, Paxson, Mentasta Lake, Northway Junction, and Northway.
- Yukon:** Old Crow, Vuntut Gwitchin, Gwich'in Secondary Use, Eagle Plains, Gwich'in Primary Use, Trondlyk Hwesch'in, Dawson City, and Keno.
- Northwest Territories:** Inuvialuit Settlement Region (including Tuktoyaktuk, Inuvik, and Tuktoyaktuk), Gwich'in Settlement Area, Sahtu Settlement Area, and Nacho Nyak Dun.
- Other Labels:** Kaska.

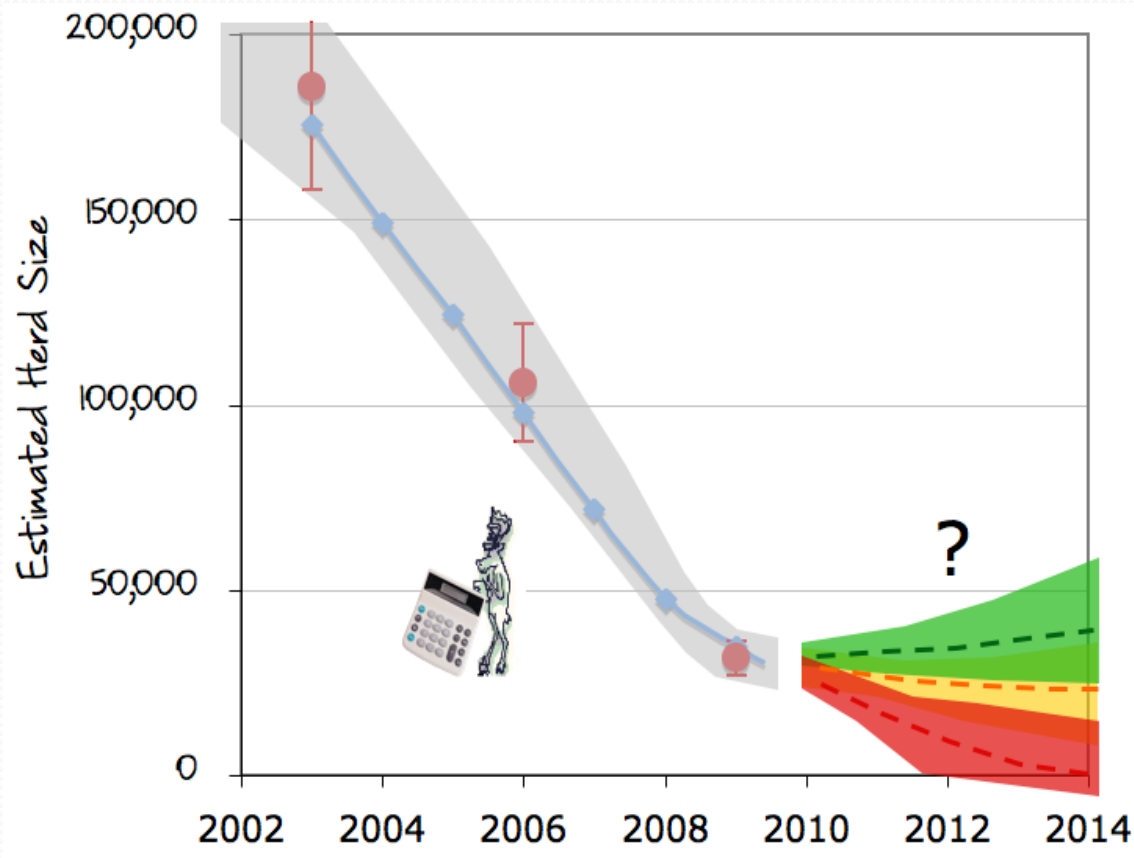
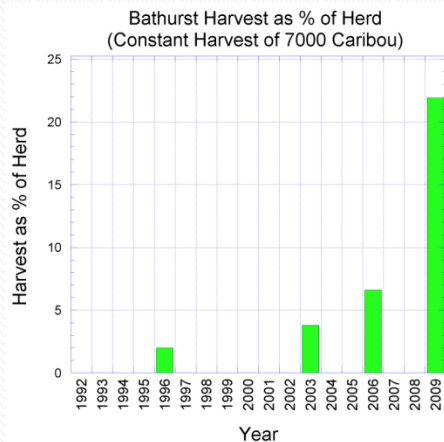
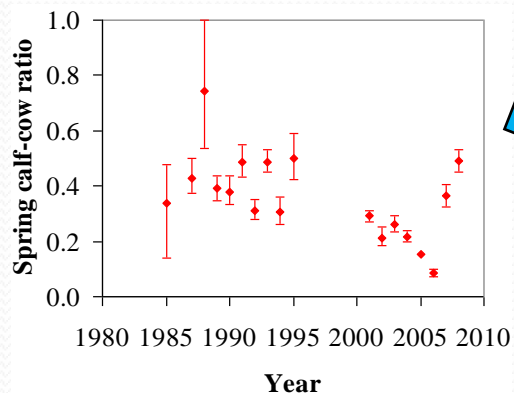
A legend at the bottom left indicates that the red line represents the "Range of Porcupine Caribou Herd". A scale bar at the bottom right shows distances in kilometers (0 to 200).

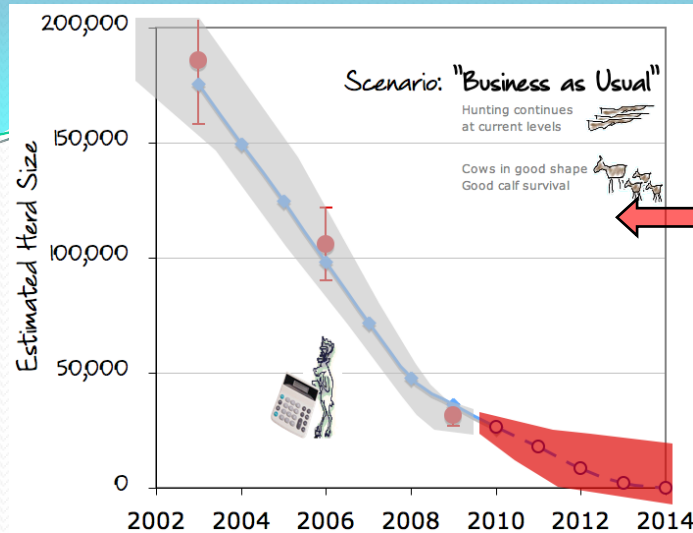






## Developing the Bathurst Caribou Calculator (2008-2009)





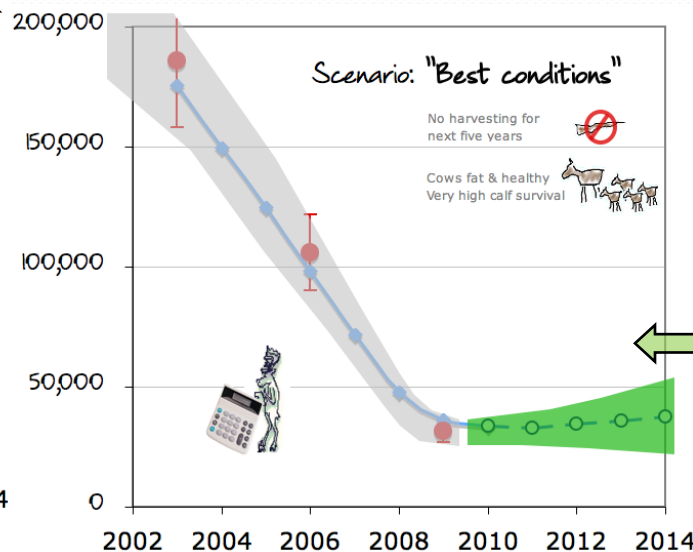
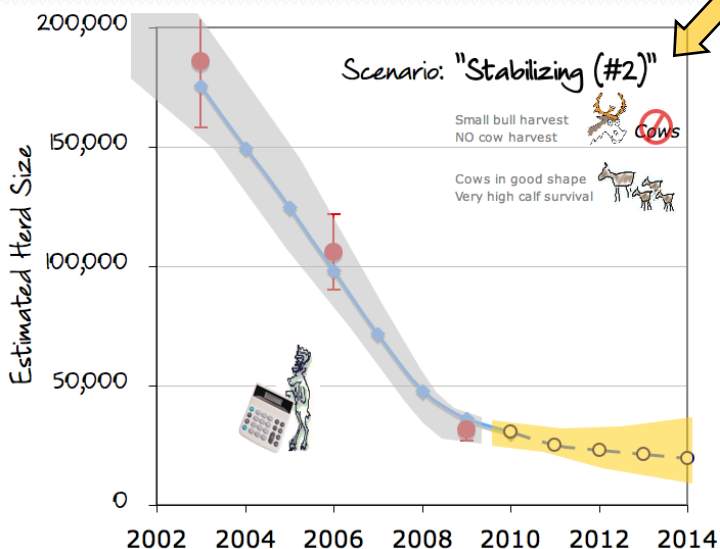
### Business as Usual

If the hunter harvest stays the same, cows stay in good shape, and recent good calf survival continues, the herd will most likely disappear in the next 4-5 years. There is no level of calf production or survival that can compensate for current high cow death rates.

### Stabilizing Scenario #2

If there is no cow harvest for the next 5 years and a limited small bull harvest, cows are in good shape, and calf survival is very good, the decline should slow down and the herd might begin to stabilize.

## Bathurst Caribou Herd: 5-year Prospects



### Best Conditions

If there is no harvest for 5 years, cows stay in very good shape, and calf survival is very good, the herd might stabilize and start to increase.

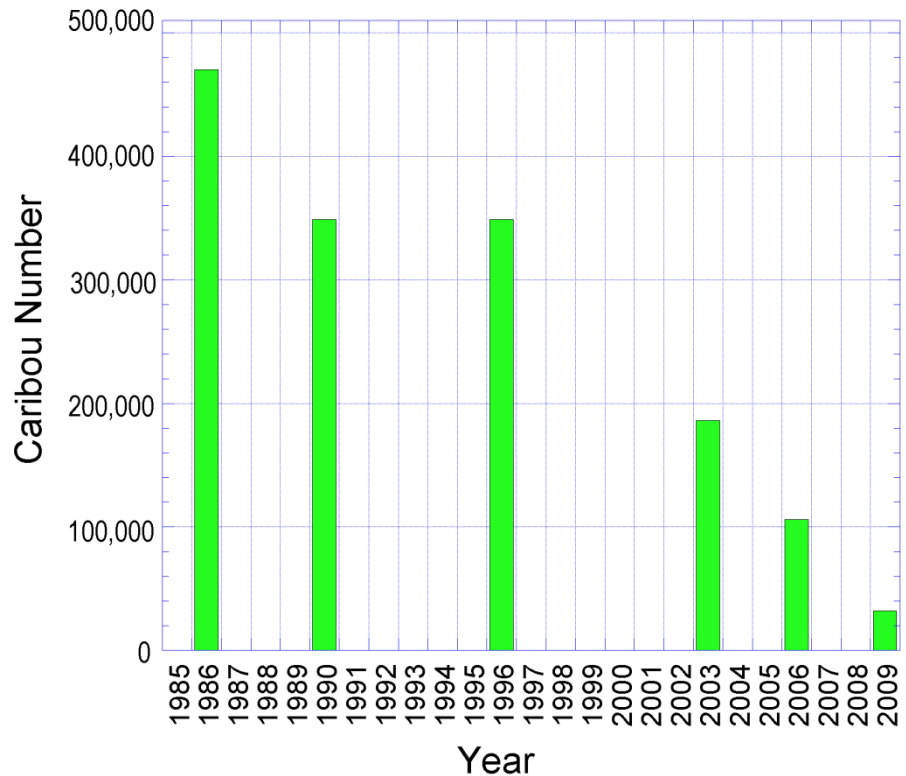
Currently the herd has a large proportion of young caribou that are not yet breeding. This is one reason why an increase in the herd can at best be slow under best conditions.

# Bathurst Caribou – Management

1. Bathurst June 2009 survey – rapid decline
2. Workshops, Meetings, Information Sharing: July – Dec. 2009 (on-going)
3. Joint Management Proposal (TliCho & GNWT) Oct. 30, 2009
4. (Likely) i Renewable Resources Board Hearings Dec. 2009
5. Consultation with all partners, aboriginal governments – November



Bathurst Herd Size 1985-2009





# Joint ENR/Tlicho Proposal

## **All herds in North & South Slave**

Commercial meat sales

- Eliminate

Non-resident hunters (outfitted)

- Eliminate

Resident hunters (non-Aboriginal)

- Eliminate



## ***General Hunting Licence Holders***

### **Bluenose-East**

- Tags only – primarily bulls
- reassess in fall 2010 when new herd estimate obtained

### **Bathurst**

- Limited bulls only - tags
- Mobile protection zones

### **Ahiak**

Tags only – primarily bulls  
Reassess in fall 2010 when new herd estimate obtained