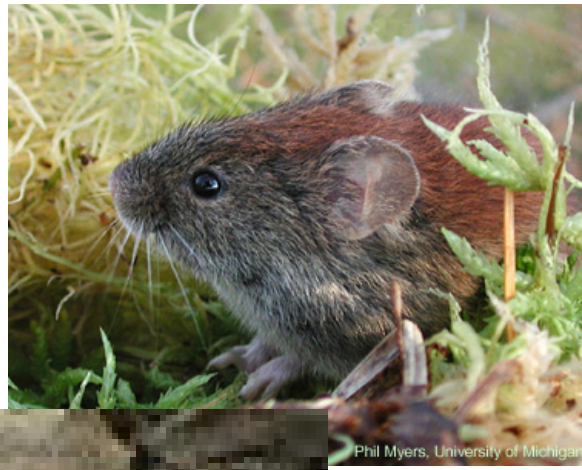


Update 2020

NWT Small Mammal and Hare Transect Surveys

Since 1990, Wildlife officers, wildlife technicians biologists, and volunteers have been monitoring populations of small mammals and snowshoe hares near many communities in the NWT. We study voles, mice, shrews and snowshoe hares below the tree line, lemmings, shrews and voles above the tree line.

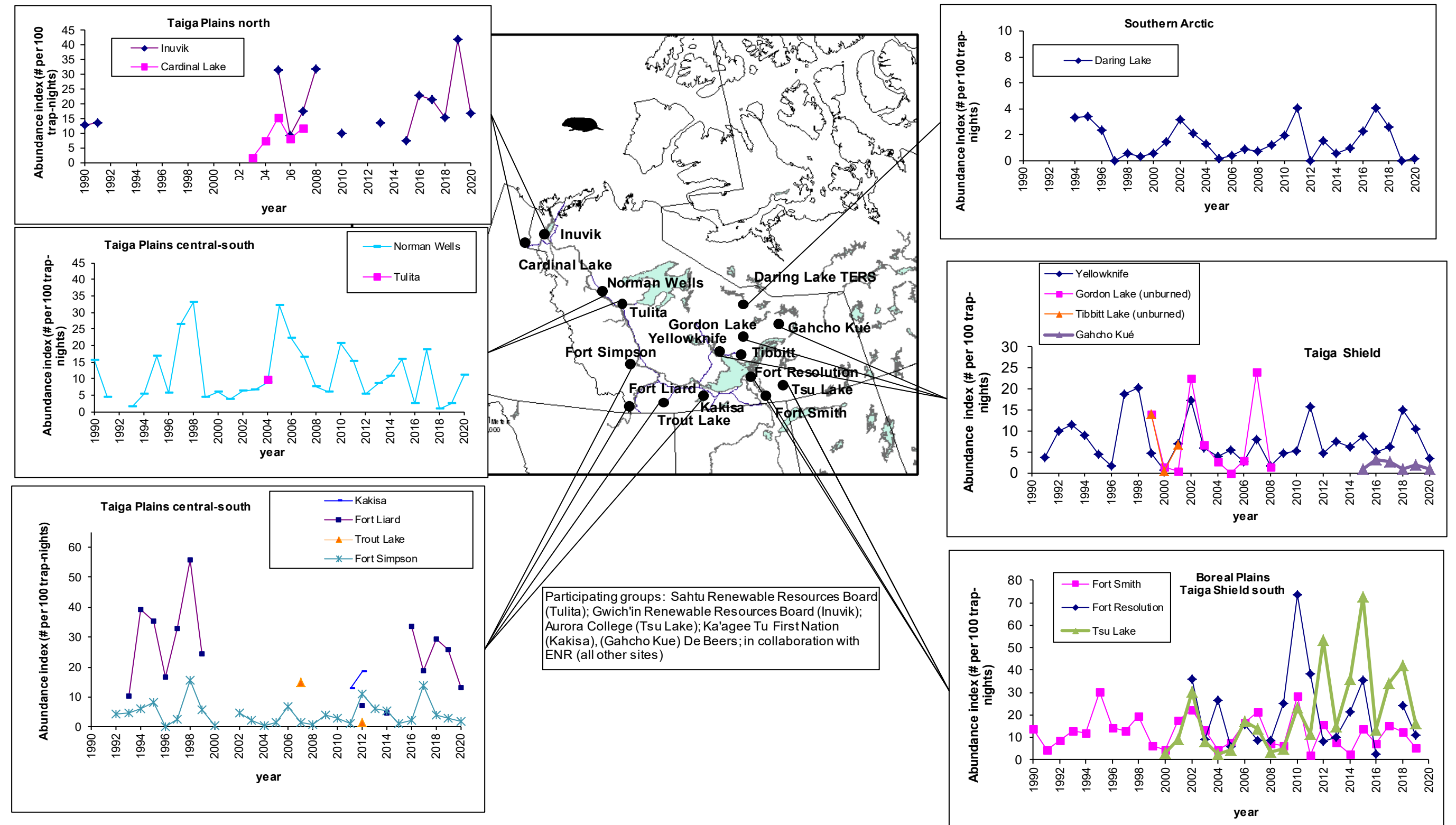


We look at how small mammal and hare abundance changes from year to year and from community to community.

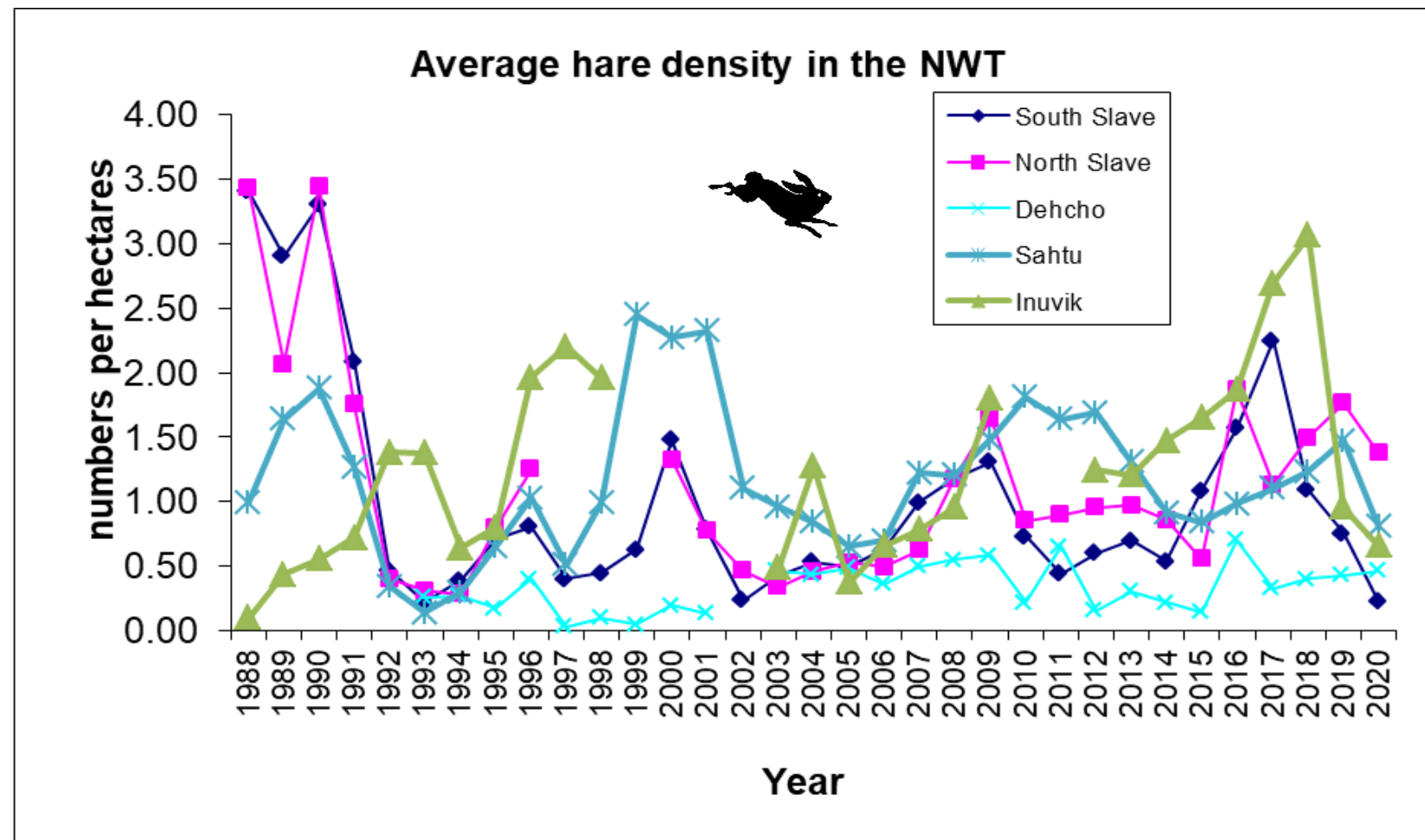
UPDATE Numbers of mice and voles in 2020 were low or declining in most regions, except Sahtu, and Inuvik always seem to be catching a lot of them.



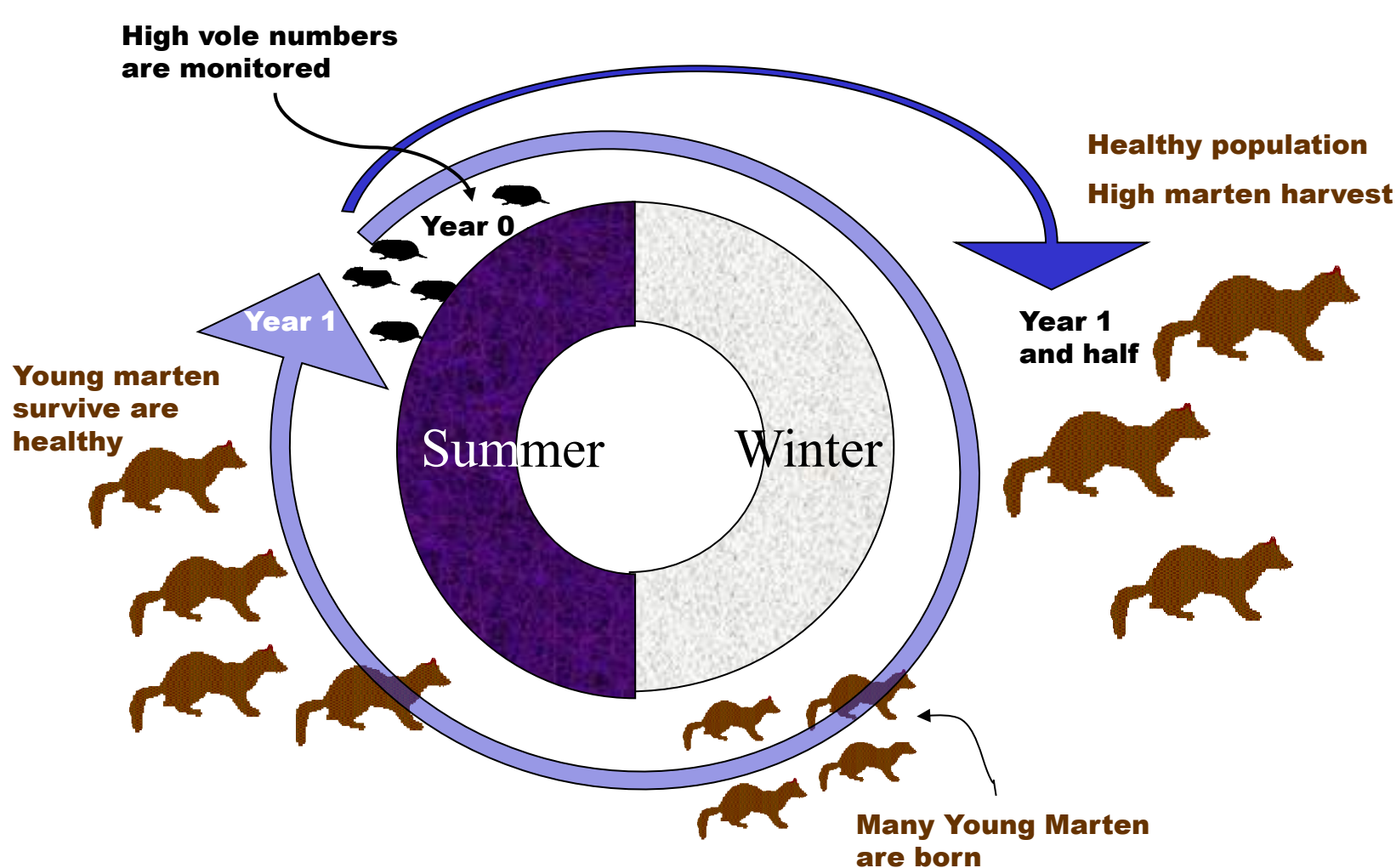
Small mammal abundance indices in the NWT - 1990-2020



UPDATE A large peak was expected in 2020, but declining numbers suggest that a small peak occurred between 2017-2019 depending on the region.



To gain more information on prey fluctuations in NWT ecosystems, we look at how the populations of voles and snowshoe hare in one year may affect abundance of their predators a year and a half later. Martens are predators of both voles and snowshoe hare. However, their harvest is not predicted the abundance of both preys, but appear to be predicted by pelt prices. Lynx are specialists, they fed mostly on snowshoe hares. Lynx harvests more closely match cycles in hare density indices, one or two years later.

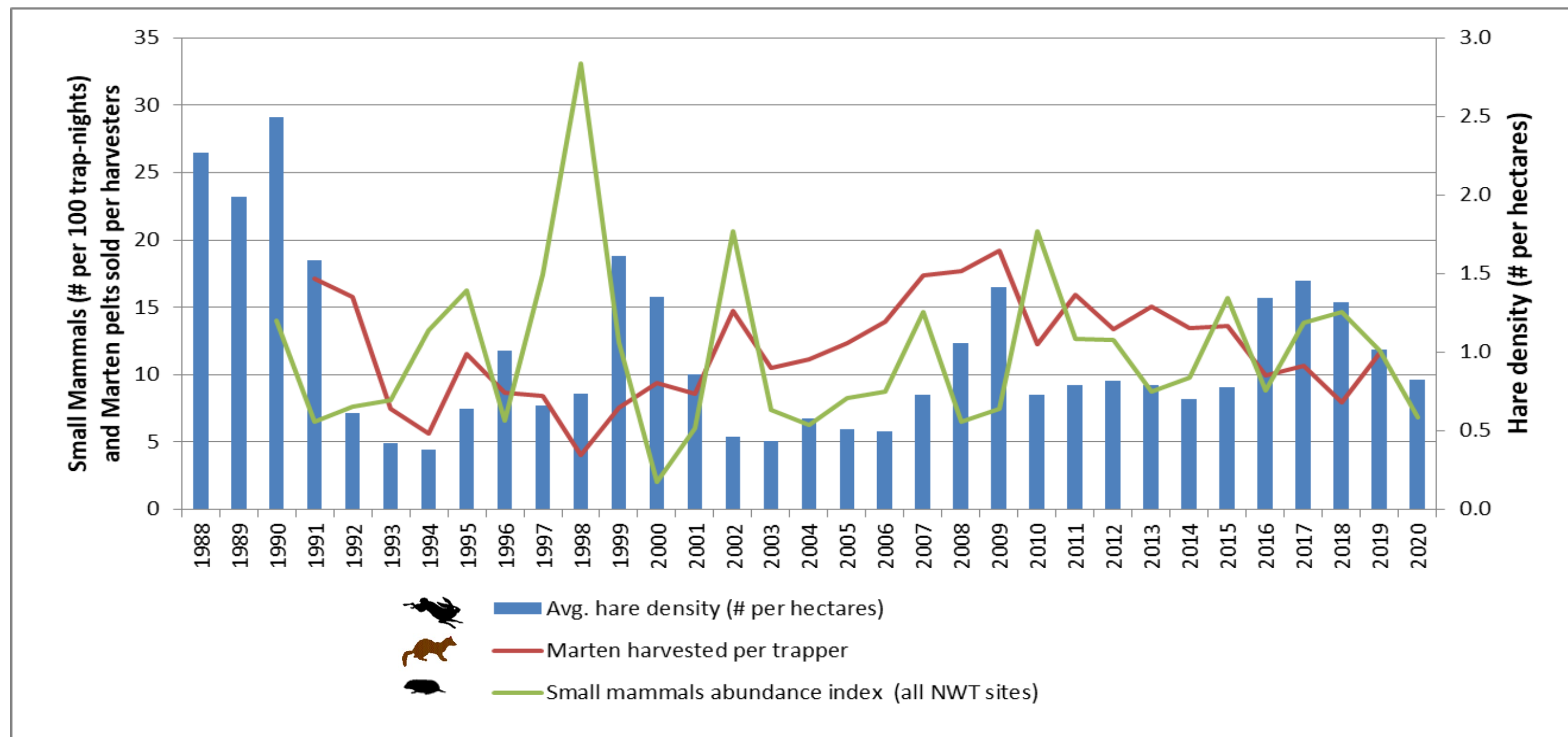


Share your information!!

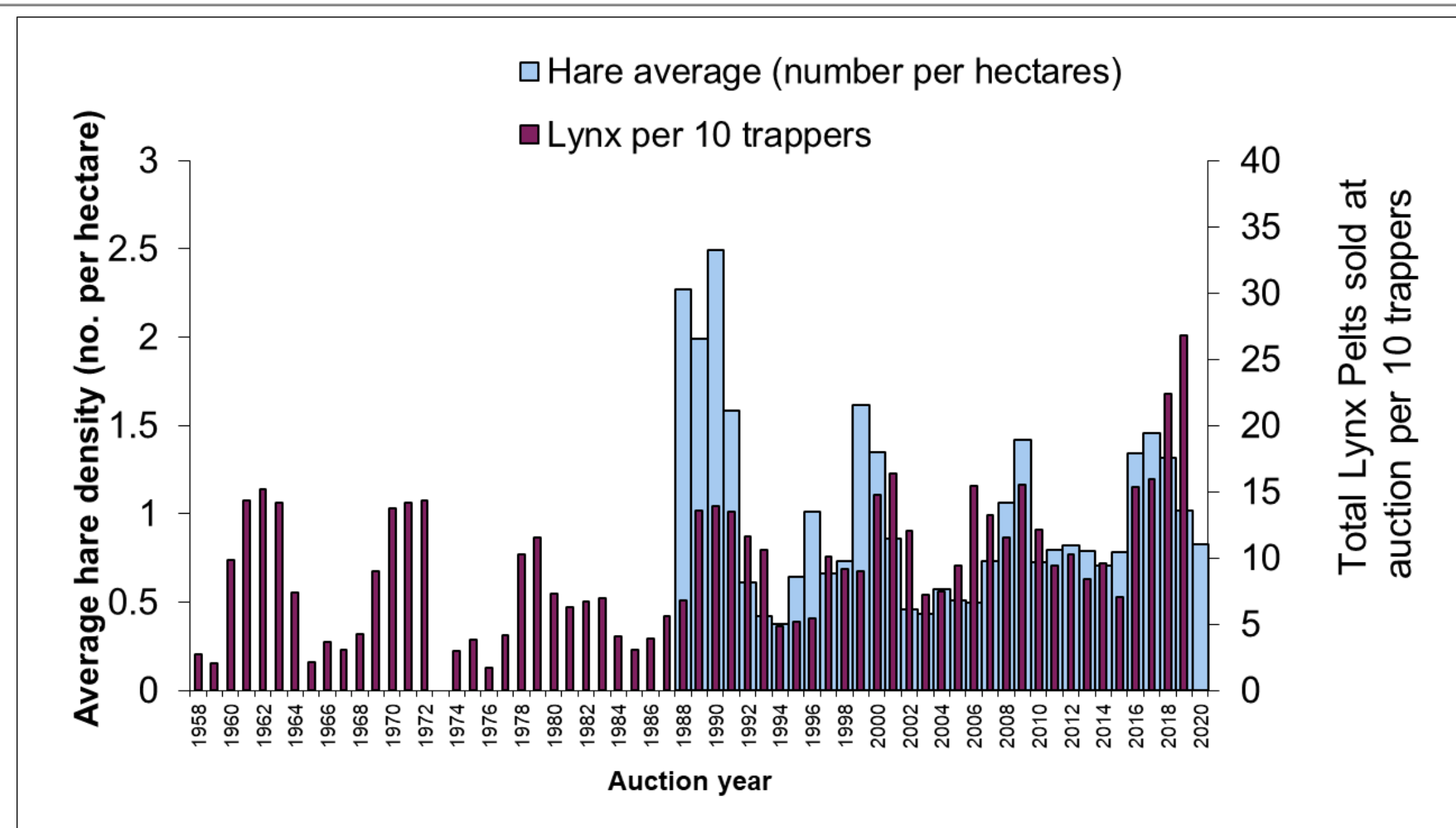
We would like to increase the number of sites collecting information on small mammals and hares to help improve predictions of furbearer harvest potential at the Regional level and to monitor long-term trends. Survey protocols are available.

Your observations on furbearers, hare and small mammal abundance are valuable to predict harvest.

Surveys are conducted also in Wood Buffalo National Park and Gahcho Kue.



The NWT SM-Hare Survey is performed in cooperation with:



For more information contact your Regional Biologist.
Dept. of Environment and Natural Resources

Government of the Northwest Territories
Extra posters are available at
WildlifeOBS@gov.nt.ca

